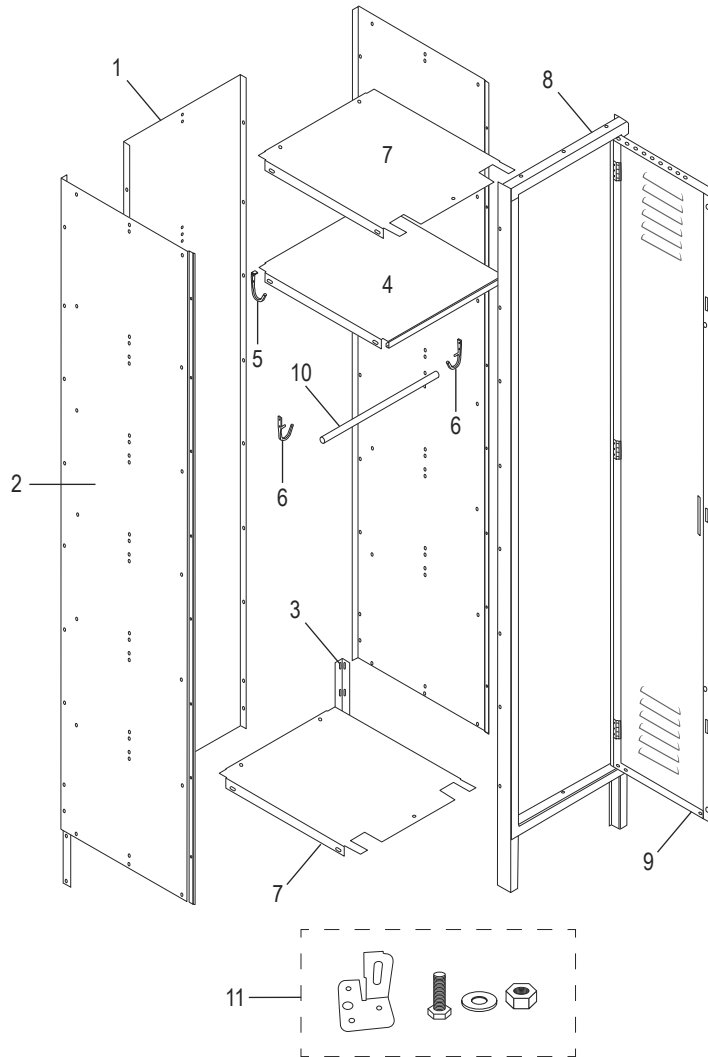


ULINE H-7584GR

SINGLE TIER LOCKER

ONE WIDE – GRAY

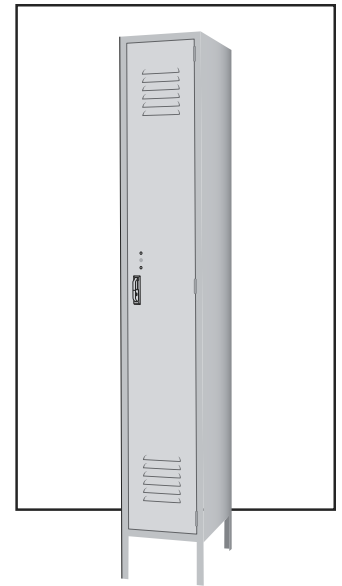
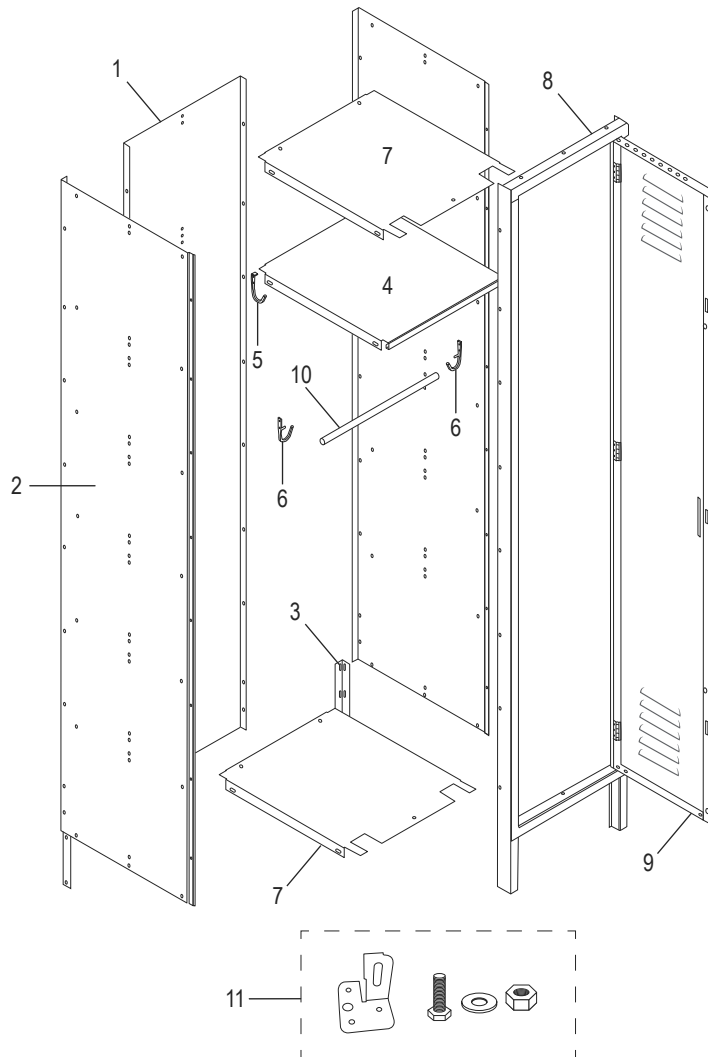
1-800-295-5510
 uline.com



#	DESCRIPTION	QTY.	ULINE PART NO.	MFG. PART NO.
1	Back	1	-----	A11227BCJ04-GRAY
2	Side	2	-----	A11827BCJ03-GRAY
3	Rear Leg	2	H-7148	A11227BCJ10-GRAY
4	Shelf	1	H-4289G-SHLF	A11827BCW07-GRAY
5	Back Coat Hook	1	H-4290-SNGHK	018-YGZ21
6	Side Coat Hook	2	-----	A11827BCJ-02-08
7	Top/Bottom Shelves	2	-----	A11827BCW05-06-GRAY
8	Door Frame Assembly	1	H-4289GR-FD	12-78HHIMMK-GRAY
9	Locker Door	1	-----	018-AD11227BCH02-GRAY
10	Coat Rod	1	-----	DYGG293
11	Leveling Foot with Hardware	4	H-5997	018-DMGTZJ
	Hardware Pack (Not Shown)	1	H-4291HRDW	-----
	Latch Bar (Not Shown)	1	-----	a11227bch12
	Latch (Not Shown)	1	H-4289-latch	018-YGZ021

ULINE H-7584GR
LOCKER DE UNA PUERTA
1 DE ANCHO – GRIS

800-295-5510
 uline.mx



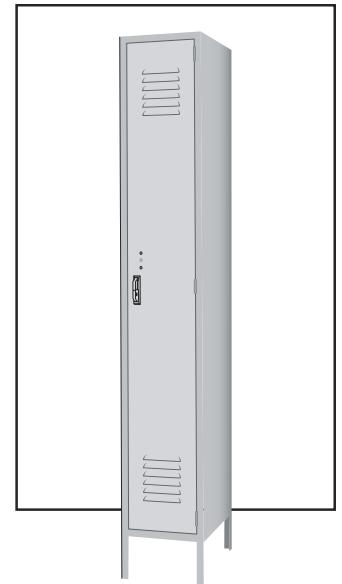
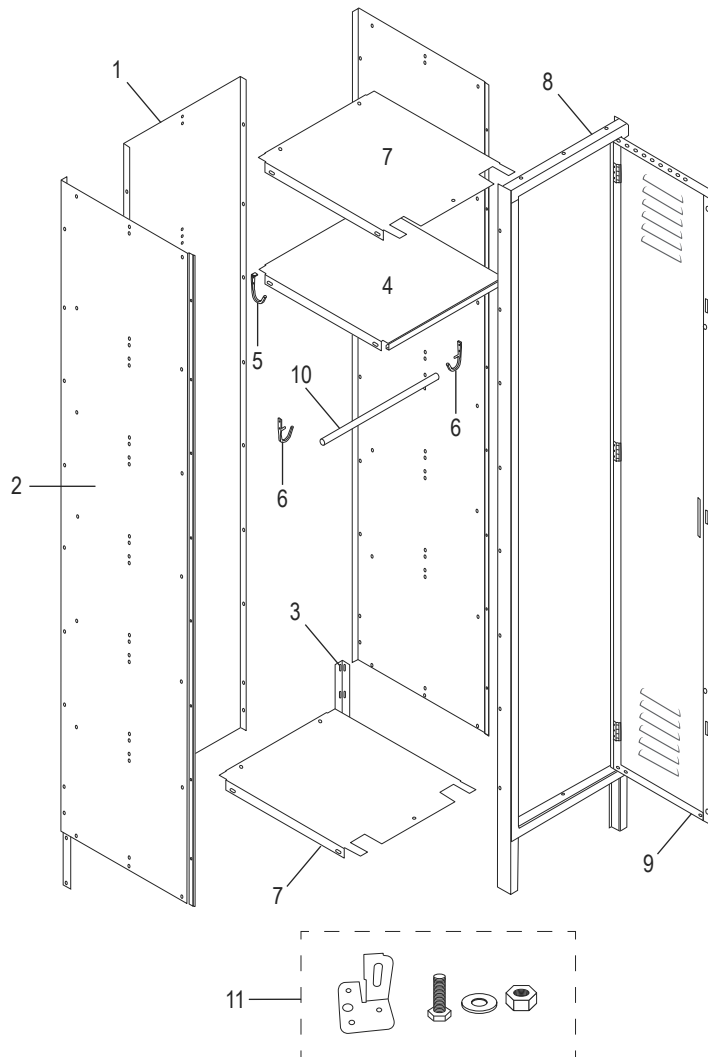
#	DESCRIPCIÓN	CANT.	NO. DE PARTE DE ULINE	NO. DE PARTE DEL FABRICANTE
1	Parte Posterior	1	-----	A11227BCJ04-GRAY
2	Lateral	2	-----	A11827BCJ03-GRAY
3	Pata Posterior	2	H-7148	A11227BCJ10-GRAY
4	Repisa	1	H-4289G-SHLF	A11827BCW07-GRAY
5	Gancho Posterior para Chamarras	1	H-4290-SNGHK	018-YGZ21
6	Gancho Lateral para Chamarras	2	-----	A11827BCJ-02-08
7	Repisas Superiores/Inferiores	2	-----	A11827BCW05-06-GRAY
8	Ensamble del Marco de la Puerta	1	H-4289GR-FD	12-78HH1MMK-GRAY
9	Puerta del Locker	1	-----	018-AD11227BCH02-GRAY
10	Barra para Chamarras	1	-----	DGYG293
11	Pata Niveladora con Tornillería	4	H-5997	018-DMGTZJ
	Paquete de Tornillería (No se Muestra)	1	H-4291HRDW	-----
	Barra del Pestillo (No se Muestra)	1	-----	a11227bch12
	Pestillo (No se Muestra)	1	H-4289-latch	018-YGZ021

ULINE H-7584GR

CASIER À UNE RANGÉE

UNE COLONNE – GRIS

1-800-295-5510
uline.ca



#	DESCRIPTION	QTÉ	RÉF. ULINE	RÉF. DU FABRICANT
1	Panneau arrière	1	-----	A11227BCJ04-GRAY
2	Panneau latéral	2	-----	A11827BCJ03-GRAY
3	Patte arrière	2	H-7148	A11227BCJ10-GRAY
4	Tablette	1	H-4289G-SHLF	A11827BCW07-GRAY
5	Patère arrière	1	H-4290-SNGHK	018-YGZ21
6	Patère latérale	2	-----	A11827BCJ-02-08
7	Tablettes supérieure et inférieure	2	-----	A11827BCW05-06-GRAY
8	Cadre de porte	1	H-4289GR-FD	12-78HH1MMK-GRAY
9	Porte de casier	1	-----	018-AD11227BCH02-GRAY
10	Tringle	1	-----	DGYG293
11	Patte de nivellement avec matériel d'installation	4	H-5997	018-DMGTZJ
	Matériel d'installation (non illustré)	1	H-4291HRDW	-----
	Barre pour loquet (non illustré)	1	-----	a11227bch12
	Loquet (non illustré)	1	H-4289-latch	018-YGZ021