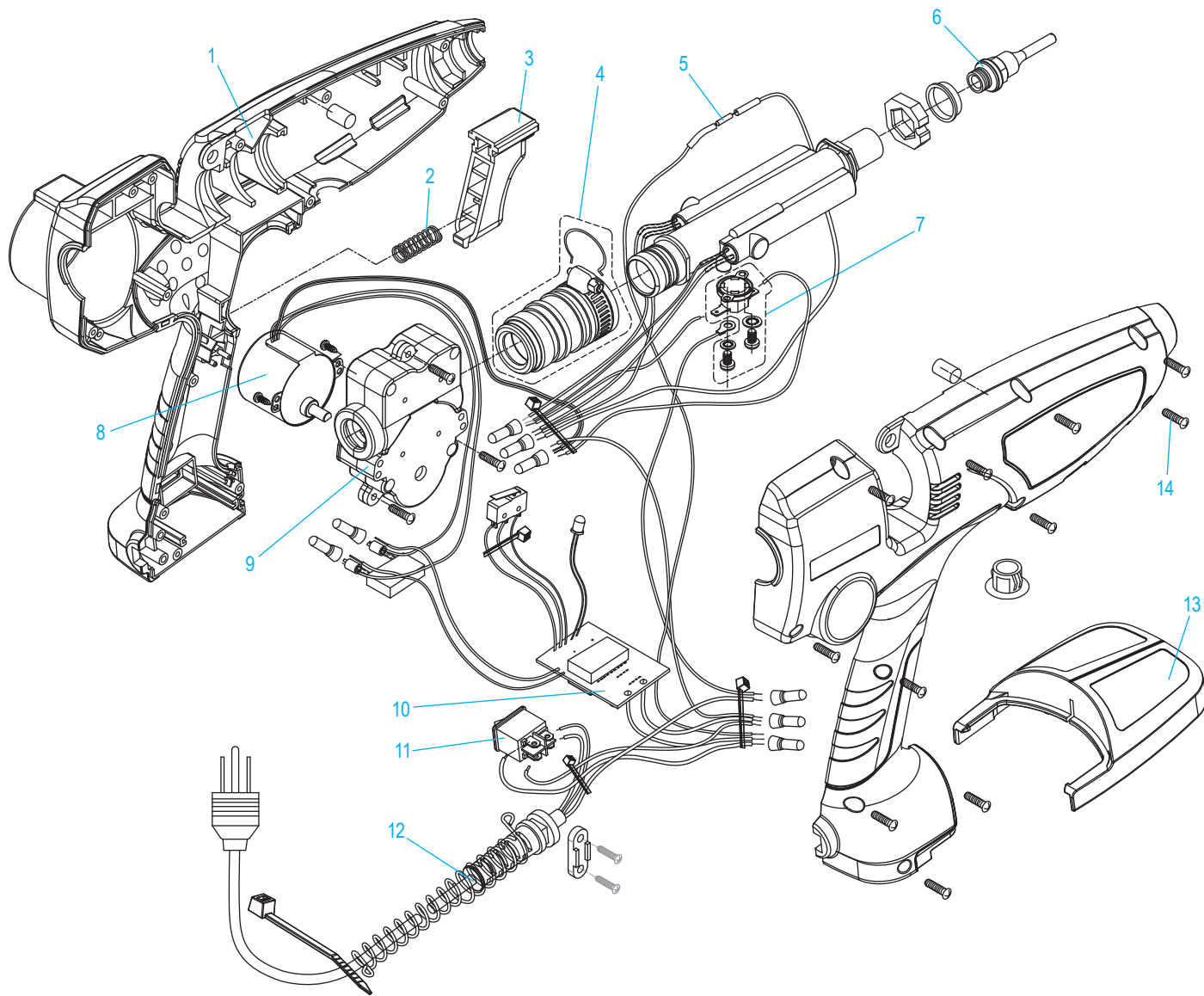
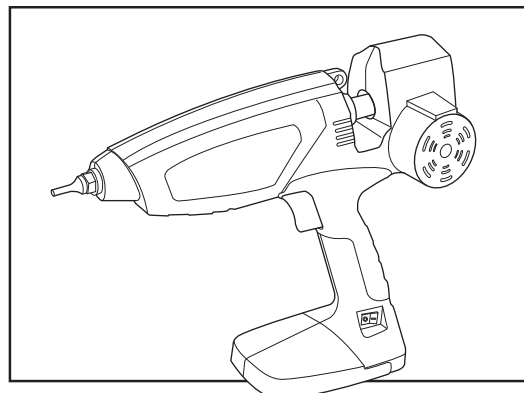


ULINE H-7182 MOTORIZED GLUE GUN – 5/8"

1-800-295-5510
uline.com



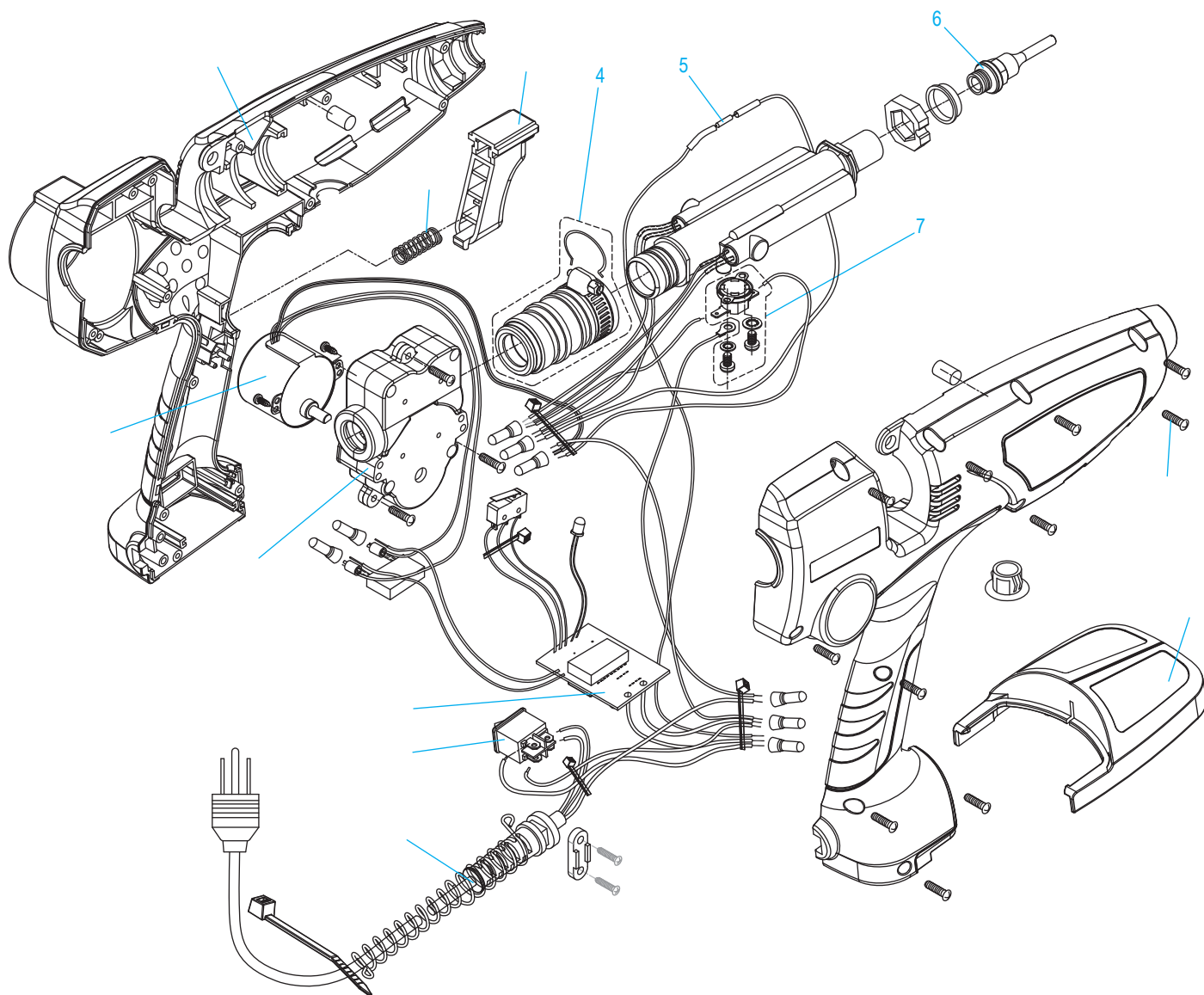
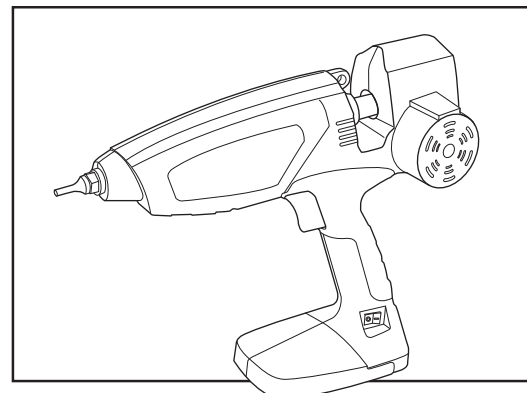
ULINE H-7182
**MOTORIZED GLUE
 GUN – 5/8"**

1-800-295-5510
 uline.com

#	DESCRIPTION	QTY.	ULINE PART NO.	MFG. PART NO.
1	Handle Set	1	H-7182-HNDL	2903010
2	Spring	1	H-7182-SPRNG	2904020
3	Trigger	1	H-7182-TRIGR	2903040
4	Inlet Tube Set	1	H-7182-ITS	2642061S
5	Fuse Set	1	H-7182-FUSE	9002025SH172
6	Nozzle	1	H-7182-NOZZ	MN-10
7	Thermostat Set	1	H-7182-THERM	9002055A205A
8	Motor Set	1	H-7182-MOTOR	2423054AS110
9	Gear Set	1	H-7182-GEAR	2901620
10	PCB Set	1	H-7182-PCB	2905010S0020
11	On/Off Switch	1	H-7182-SWITCH	2154055-R
12	Power Cord	1	H-7182-PWRCD	9001027GS-B
13	Stand	1	H-7182-STAND	2883030
14	Screw	11	H-7182-SCREW	9003003

ULINE H-7182
H-7182 - PISTOLA
DE SILICÓN
CON MOTOR – 5/8"

01-800-295-5510
uline.mx



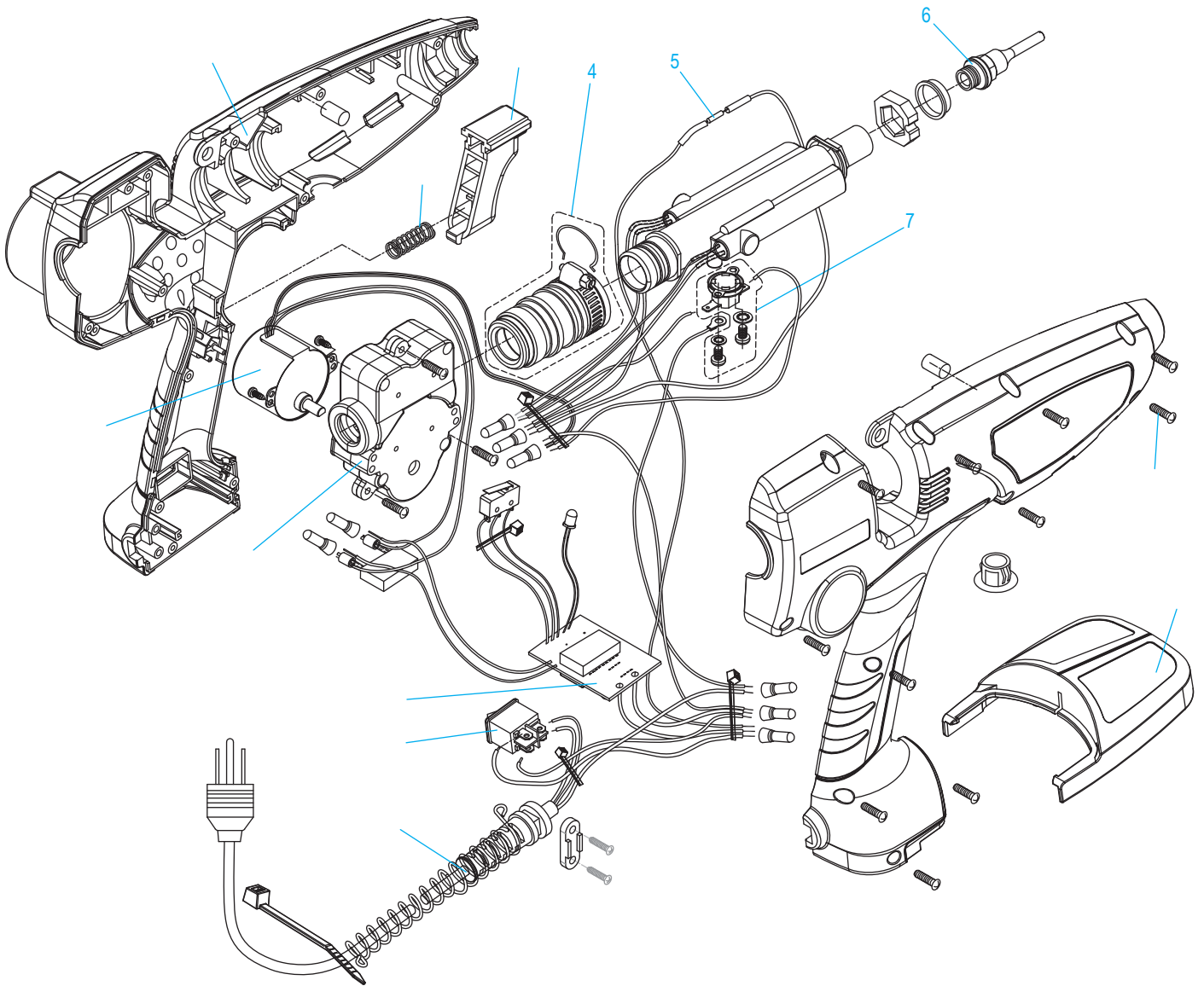
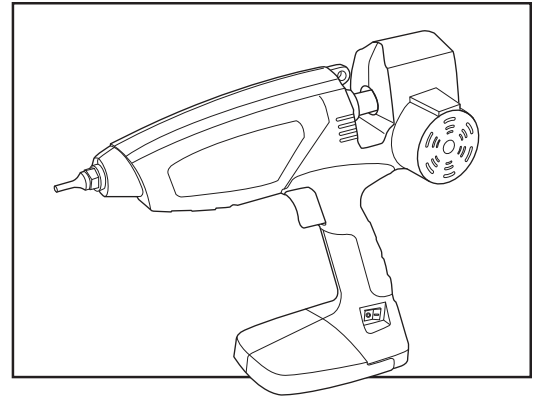
ULINE H-7182
H-7182 - PISTOLA
DE SILICÓN
CON MOTOR – 5/8"

01-800-295-5510
 uline.mx

#	DEXCRIPCIÓN	CANT.	NO DE PARTE DE ULINE.	NO. DE PARTE DEL FABRICANTE
1	Set del Asa	1	H-7182-HNDL	2903010
2	Resorte	1	H-7182-SPRNG	2904020
3	Gatillo	1	H-7182-TRIGR	2903040
4	Set del Tubo de Entrada	1	H-7182-ITS	2642061S
5	Set de Fusible	1	H-7182-FUSE	9002025SH172
6	Boquilla	1	H-7182-NOZZ	MN-10
7	Set del Termostato	1	H-7182-THERM	9002055A205A
8	Set del Motor	1	H-7182-MOTOR	2423054AS110
9	Set de Engranaje	1	H-7182-GEAR	2901620
10	Set de Tarjeta de Circuito Impreso	1	H-7182-PCB	2905010S0020
11	Interruptor de Encendido/Apagado	1	H-7182-SWITCH	2154055-R
12	Cable de Corriente	1	H-7182-PWRCD	9001027GS-B
13	Soporte	1	H-7182-STAND	2883030
14	Tornillo	11	H-7182-SCREW	9003003

ULINE H-7182
PISTOLET À COLLE
MOTORISÉ – 5/8 PO

1-800-295-5510
uline.ca



ULINE H-7182
PISTOLET À COLLE
MOTORISÉ – 5/8 PO

1-800-295-5510
 uline.ca

#	DESCRIPTION	QTÉ	RÉF. ULINE	RÉF. DU FABRICANT
1	Ensemble de la poignée	1	H-7182-HNDL	2903010
2	Ressort	1	H-7182-SPRNG	2904020
3	Détente	1	H-7182-TRIGR	2903040
4	Ensemble du tube d'entrée	1	H-7182-ITS	2642061S
5	Ensemble du fusible	1	H-7182-FUSE	9002025SH172
6	Buse	1	H-7182-NOZZ	MN-10
7	Ensemble du thermostat	1	H-7182-THERM	9002055A205A
8	Ensemble du moteur	1	H-7182-MOTOR	2423054AS110
9	Ensemble de l'engrenage	1	H-7182-GEAR	2901620
10	Ensemble de la carte de circuit imprimé	1	H-7182-PCB	2905010S0020
11	Interrupteur marche/arrêt	1	H-7182-SWITCH	2154055-R
12	Cordon d'alimentation	1	H-7182-PWRCD	9001027GS-B
13	Support	1	H-7182-STAND	2883030
14	Vis	11	H-7182-SCREW	9003003