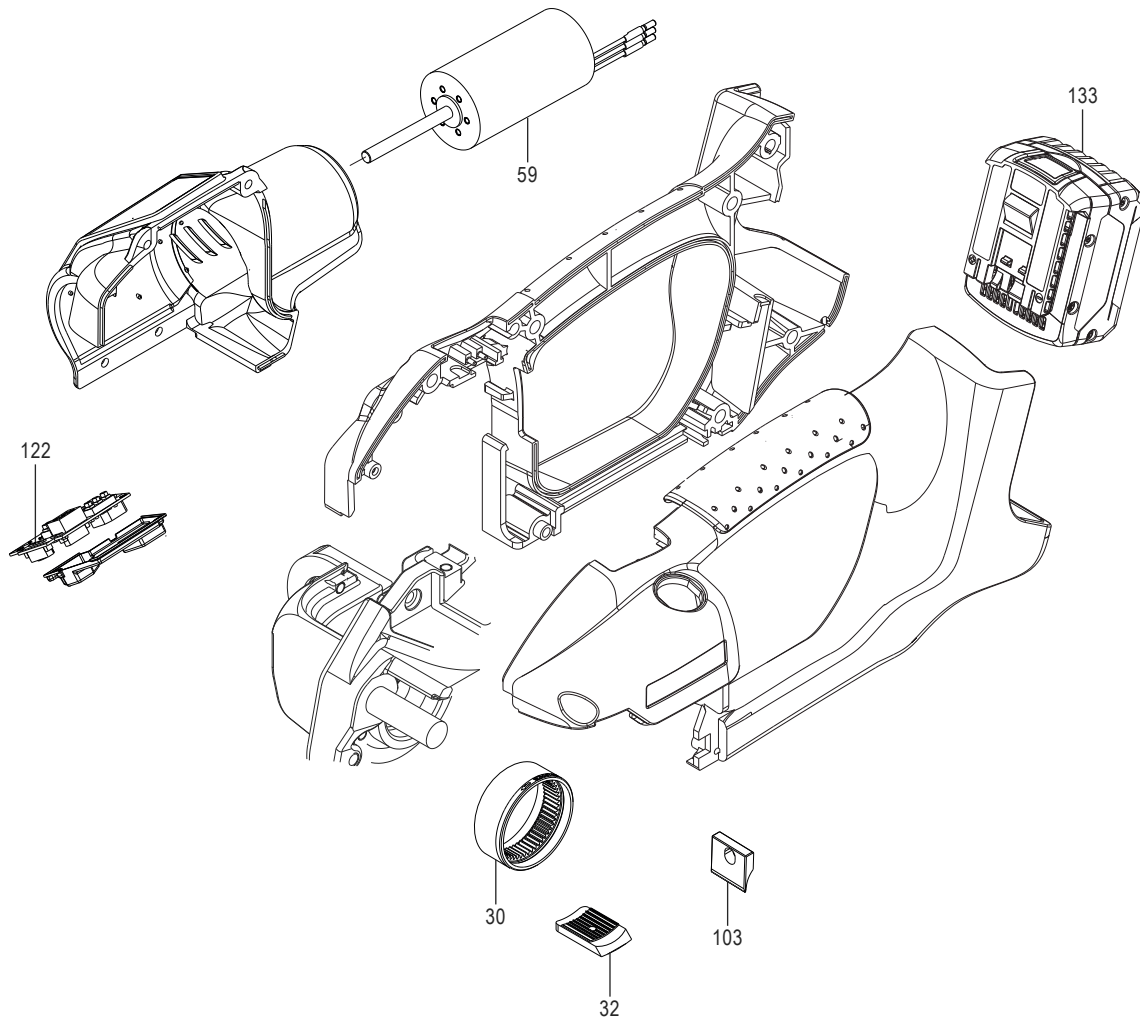
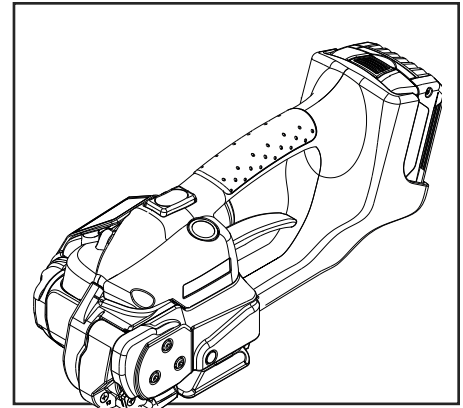


ULINE H-5343

AUTOMATIC SEALLESS COMBO STRAPPING TOOL

1-800-295-5510
uline.com

Para Español, vea páginas 8-14.
Pour le français, consulter les pages 15-21.



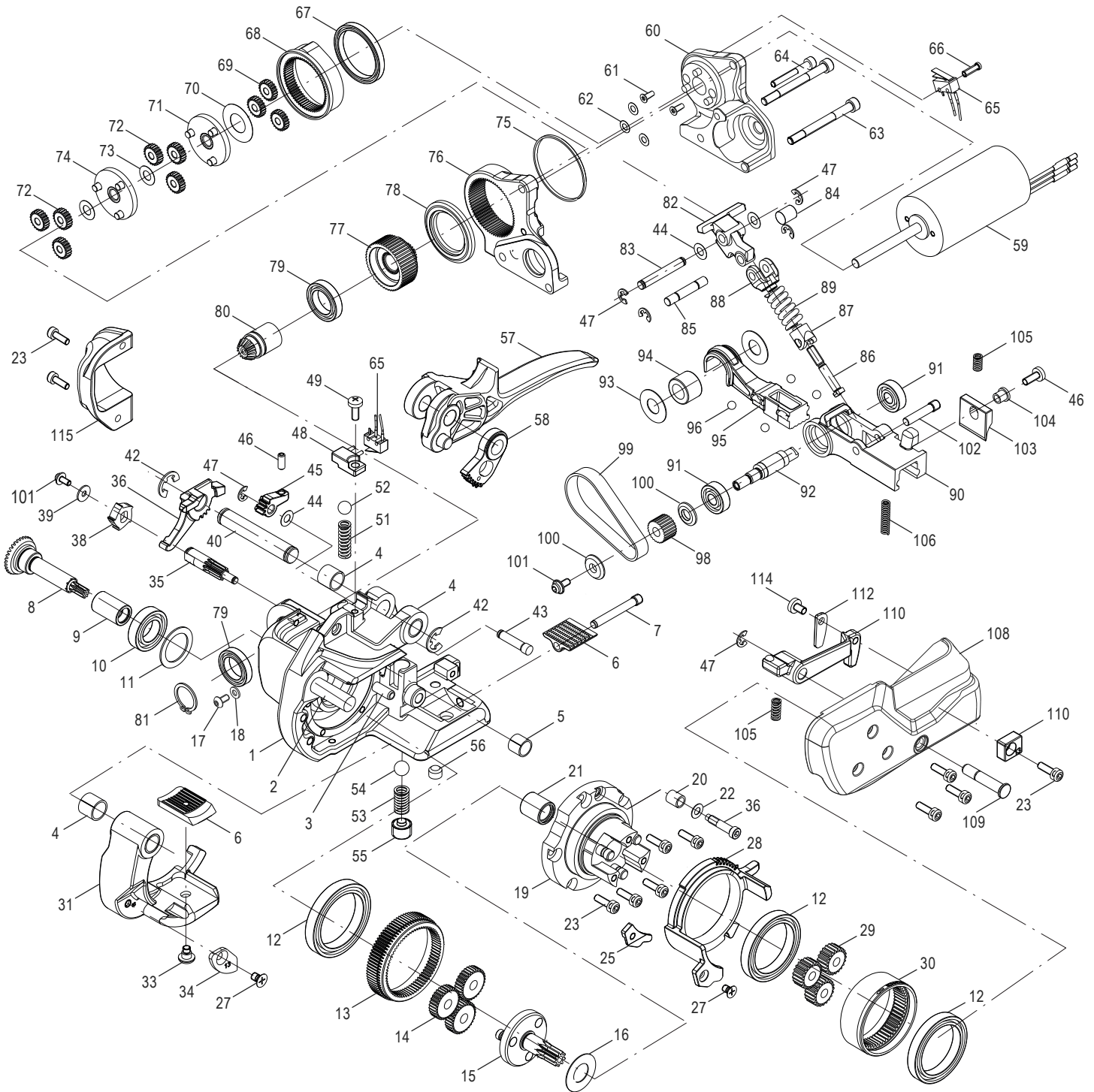
#	DESCRIPTION	QTY.	ULINE PART NO.	MFG. PART NO.
30	Tension Wheel	1	H-2385-WHEEL	1821.047.013
32	Tooth Plate	1	H-2385-TOOTH	1821.048.015
59	Motor Complete	1	-----	1821.140.088
103	Knife	1	H-2385-KNIFE	1821.209.019
122	Printed Circuit Board	1	-----	1821.152.094
133	Battery 14.4V/2.6 Ah Li-Ion, US	1	H-5343-BATT	2187.009

 **NOTE:** For a more detailed parts diagram, please proceed to the following pages.

ULINE H-5343

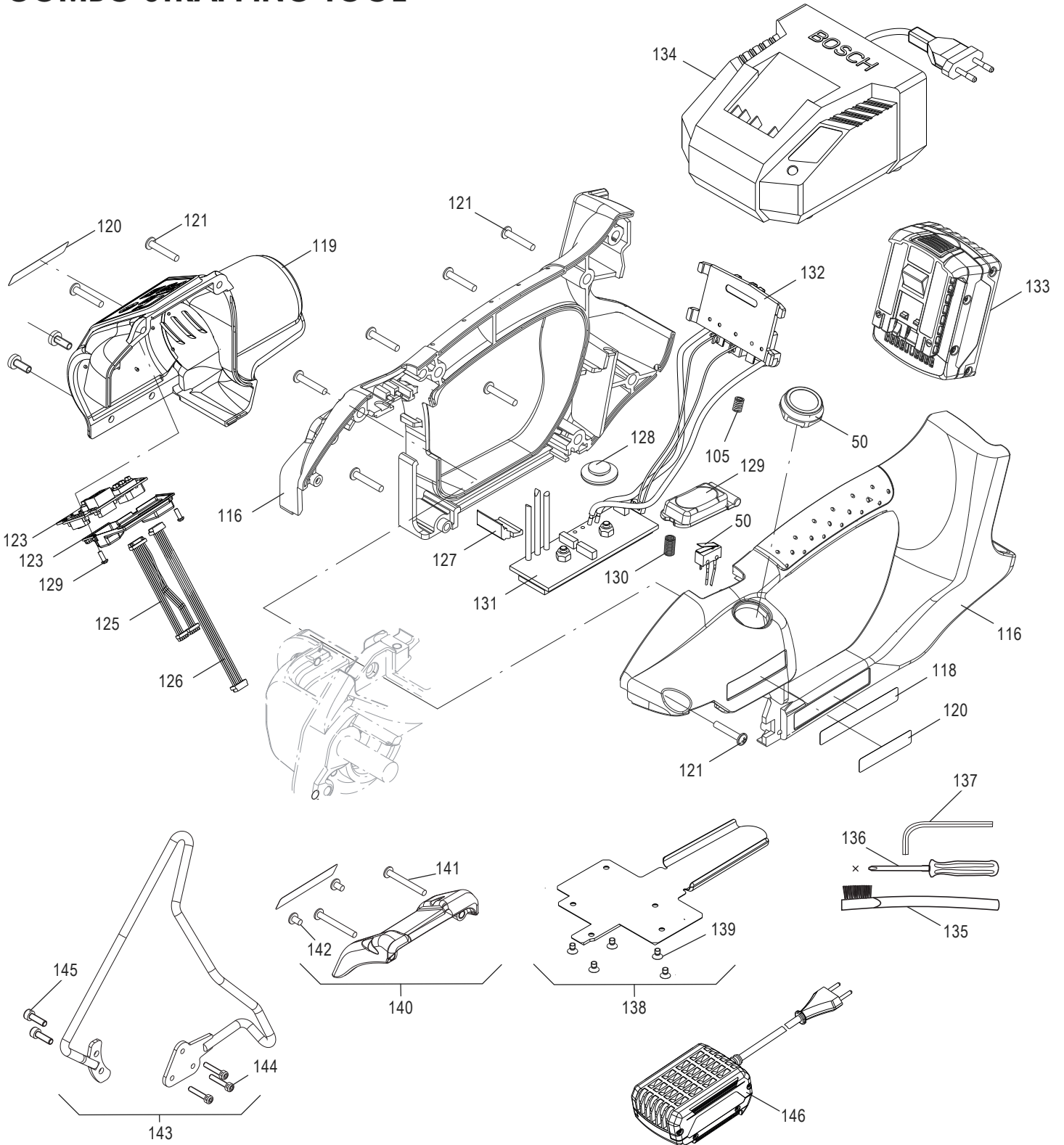
AUTOMATIC SEALLESS COMBO STRAPPING TOOL

1-800-295-5510
uline.com



ULINE H-5343 AUTOMATIC SEALLESS COMBO STRAPPING TOOL

1-800-295-5510
uline.com



ULINE H-5343
**AUTOMATIC SEALLESS
COMBO STRAPPING TOOL**

1-800-295-5510
uline.com

#	DESCRIPTION	QTY.	ULINE PART NO.	MFG. PART NO.
1	Base Plate Complete, Includes Pos. 2-6, 13, 131	1	H-2385BASEPL	1832.011.170
2	Cylinder Pin	1	-----	1921.310.501
3	Roll Pin	1	-----	1921.906.262
4	Slide Bearing	4	-----	1935.510.100
5	Slide Bearing	1	-----	1935.508.080
6	Tooth Plate Bottom	1	H-2385-THBTM	1832.022.109
7	Set Screw	1	H-2386-SETSW	1832.022.055
8	Bevel Wheel with Pinion	1	H-2385-BVWHL	1821.061.018
9	Free-Wheel Needle Bearing	1	-----	1926.502.100
10	Ball Bearing	1	-----	1930.190.154
11	Spacer Disk	1	H-2385-SDISK	1917.411.208
12	Ball Bearing	3	H-2385-BEAR	1930.180.356
13	Blocking Wheel	1	H-2385-BWHL	1832.039.211
14	Planetary Wheel, 1st Step	3	-----	1821.060.016
15	Planetary Support Complete	1	H-2385-PGEAR	1832.039.165
16	Spacer	1	-----	1917.401.125
17	Panhead Screw	1	-----	1912.804.084
18	Spacer Disk	1	-----	1917.411.048
19	Flange Complete, Includes Pos. 35, 36	1	-----	1832.039.197
20	Slide Bearing	1	H-2386-20SB	1935.504.060
21	Needle Bushing	1	H-1334-63	1933.710.150
22	Spacer Disk	1	-----	1917.411.043
23	Cylinder Screw	11	H-2385-22	1911.004.127
24	Strap Guide 9mm	1	-----	1832.031.046
25	Strap Guide 13mm	1	H-2386-13STG	1832.031.051
26	Counter Sunk Screw	2	H-2385-24	1911.804.064
27	Counter Sunk Screw	2	-----	1911.804.108
28	Cam Disk	1	H-2385-CMDSK	1832.039.207
29	Planetary Wheel, 2nd Step	3	H-2385-PLANT	1821.060.014
30	Tension Wheel	1	H-2385-WHEEL	1821.047.013
31	Rocker Complete, Includes Pos. 5	1	-----	1832.031.083
32	Tooth Plate	1	H-2385-TOOTH	1821.048.015
33	Panhead Screw	1	H-7328	1832.039.200
34	Strap Stop, Front 9mm	1	-----	1832.031.093
35	Pawl Shaft	1	H-2385-PAWL	1832.039.214
36	Screw Bolt (Left-handed Thread)	1	-----	1832.039.248
37	Pawl Shaft	1	-----	1832.039.249
38	Pawl Wheel	1	-----	1832.039.213
39	Washer	1	-----	1917.809.048
40	Bolt	1	H-2385-BLT35	1832.039.208

ULINE H-5343
AUTOMATIC SEALLESS
COMBO STRAPPING TOOL

1-800-295-5510
 uline.com

#	DESCRIPTION	QTY.	ULINE PART NO.	MFG. PART NO.
41	Blocking Pawl	1	H-2385-BPAWL	1832.031.057
42	Retaining Ring	2	H-2386-RRING	1920.108.102
43	Bolt	1	H-2385-BLT38	1832.022.186
44	Spacer Disk	3	-----	1917.411.052
45	Reset Cam	1	H-2385-RSTCA	1832.022.185
46	Set Screw	1	H-2385-41	1910.404.104
47	Retaining Ring	6	H-2385RRING2	1920.104.072
48	Support Micro Switch	1	H-2385-43	1832.031.060
49	Panhead Screw	4	H-2385-PANHD	1912.404.104
50	Welding Cables	1	H-2385-CABL	1821.151.017
51	Compression Spring	1	H-2385-45	1821.010.095
52	Ball	1	H-1274GLOB	1925.010.802
53	Compression Spring	1	H-2385-48	1821.010.092
54	Ball	1	H-2385-BALL	1925.010.902
55	Set Screw	1	H-2385-50	1832.039.210
56	Set Screw	1	H-2385-SSCRW	1910.408.064
57	Rocker Lever Complete	1	H-2385-52	1832.031.061
58	Toothed Lever	1	H-2385-LEVER	1832.039.199
59	Motor Complete	1	-----	1821.140.088
60	Motor Support Complete	1	-----	1832.022.221
61	Counter Sunk Screw	2	-----	1912.203.086
62	Spacer Disk	3	H-2385-SPDSK	1917.411.041
63	Shoulder Screw	2	H-2386-62	1821.027.037
64	Cylinder Screw	1	-----	1911.104.304
65	Tensioning Cables	1	H-2385-60	1821.151.016
66	Panhead Screw	1	H-2385-PHD61	1912.401.104
67	Ball Bearing	1	H-2386-BEAR	1930.170.302
68	Excentric Cam	1	H-2385-ECAM	1832.022.160
69	Planetary Wheel, 3rd Step	3	H-2385PWHEEL	1821.060.023
70	Spacer Disk	1	-----	1917.401.122
71	Carrier Complete, 2nd Step	1	H-2385-66	1832.039.203
72	Planetary Wheel, 2nd Step	6	H-2385-PWHL	1821.060.024
73	Spacer Disk	2	-----	1917.411.062
74	Carrier Complete, 1st Step	1	H-2385-69	1832.039.201
75	Ring	1	-----	1821.020.151
76	Cover Motor Support	1	H-2386-CMSPT	1832.022.196
77	Belt Wheel Complete	1	H-2385-BWHEL	1832.039.196
78	Starting Disk	1	H-2385-STDK	1832.022.161
79	Ball Bearing	2	H-1465-BB54	1930.180.152
80	Bevel Wheel Complete	1	H-2386-61019	1821.061.019

ULINE H-5343
AUTOMATIC SEALLESS
COMBO STRAPPING TOOL

1-800-295-5510
 uline.com

#	DESCRIPTION	QTY.	ULINE PART NO.	MFG. PART NO.
81	External Retaining Ring	1	-----	1920.215.102
82	Switching Cam	1	H-2385-SC	1832.022.184
83	Bolt	1	H-2385-PIN	1821.031.055
84	Bolt	1	H-2385-BOLT	1832.022.163
85	Bolt	1	H-2385-BLT82	1832.022.174
86	Screwed Shaft	1	H-2385-SS83	1832.022.180
87	Lower Linkage	1	H-2385-84	1832.022.181
88	Upper Linkage	1	H-2385-JTOP	1832.022.182
89	Compression Spring	1	-----	1821.010.098
90	Swivel Bearing	1	H-2385-87	1832.022.171
91	Ball Bearing	2	H-2385-88BB	1930.100.072
92	Excentric Shaft	1	H-2385-XSHFT	1832.022.164
93	Spacer Disk	2	H-2386-SPACR	1917.401.105
94	Needle Bearing	1	H-2386-NB	1933.210.120
95	Welding Shoe	1	H-2385-92	1832.022.169
96	Ball	4	H-2385-93	1925.010.502
97	Supporting Disk	1	H-2385-94	1832.022.165
98	Pinion	1	H-2385-PINON	1832.022.139
99	Toothed Belt	1	H-2385-TBELT	1821.067.011
100	Washer	1	H-2385-WASHR	1821.020.147
101	Cylinder Screw	2	H-2386-102CS	1911.304.084
102	Bolt	1	-----	1832.022.173
103	Knife	1	H-2385-KNIFE	1821.209.019
104	Flanged Bushing	1	H-2385-FLNGD	1832.022.049
105	Compression Spring	3	H-2385-SPRNG	1821.010.053
106	Compression Spring	1	H-2385-103	1821.010.020
107	Lever Strap Guide Complete	1	H-2385-STRPG	1832.042.044
108	Side Cover	1	-----	1832.011.253
109	Bearing Bolt	1	H-2385-106	1821.035.007
110	Rear Inner Guide 9mm	1	-----	1832.041.020
111	Rear Inner Guide 13mm	1	-----	1832.041.019
112	Strap Guide Rear 9mm	1	-----	1832.042.047
113	Strap Guide Rear 13mm	1	H-2385-109	1832.042.043
114	Panhead Screw	1	H-2386-PANHD	1912.404.064
115	Gear Cover	1	H-2385-GCVR	1832.011.171
116	Housing Parts, Blue	1	-----	1832.011.250
117	Sign Plate	1	-----	1821.091.076
118	Type Plate	1	-----	1821.091.075
119	Motor Cover Complete	1	H-2386-MTRCV	1832.011.201
120	Name Plate	1	H-2385-NMPLT	1821.090.021

ULINE H-5343
**AUTOMATIC SEALLESS
 COMBO STRAPPING TOOL**

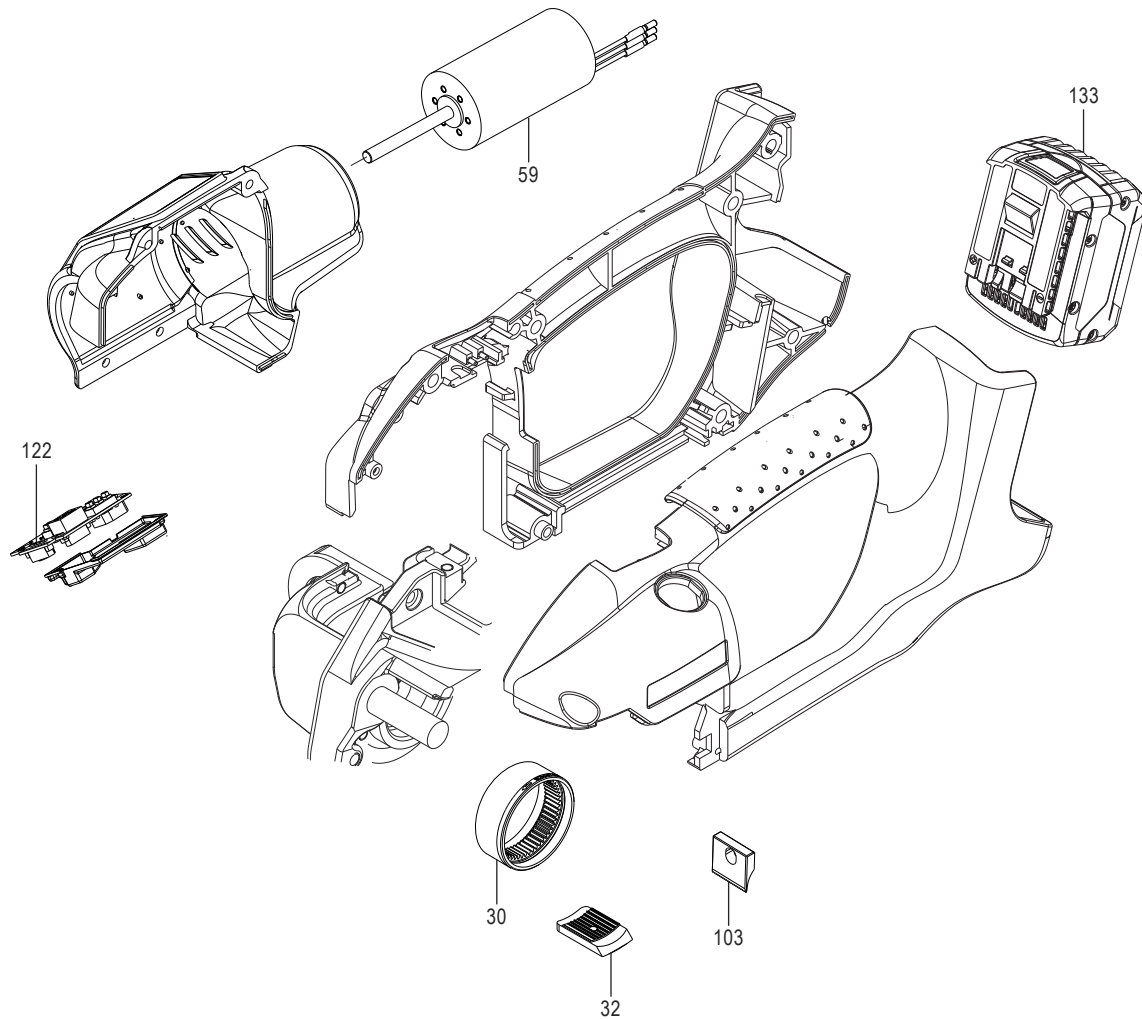
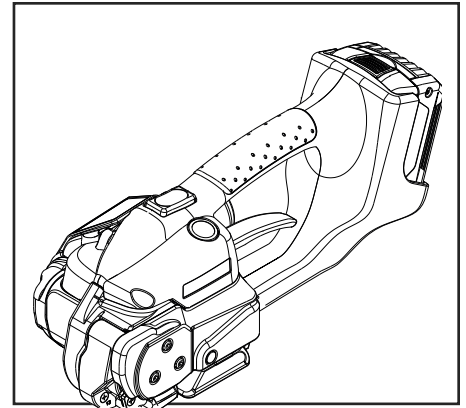
1-800-295-5510
 uline.com

#	DESCRIPTION	QTY.	ULINE PART NO.	MFG. PART NO.
121	PT Screw	9	H-1274-162	1914.635.200
122	Printed Circuit Board	1	-----	1821.152.094
123	Protection Cover PCB	1	H-2386-PCB	1832.061.016
124	PT Screw	2	-----	1914.622.062
125	Intermediate Cable	1	H-2386-CABLE	1821.151.015
126	Signal Cable	1	H-2386-51018	1821.151.018
127	Gasket	1	H-2386-76018	1821.076.018
128	Protection Plate	1	H-2385-PUCK	1832.011.181
129	Switch Button	1	-----	1832.011.184
130	Compression Spring	1	H-1274SPRNG3	1821.010.054
131	Printed Circuit Board Complete	1	H-2385-126	1821.152.072
132	Contact Plate 14.4 V	1	H-2385-CPLAT	1821.152.074
133	Battery 14.4V/2.6 Ah Li-Ion, US	1	H-5343-BATT	2187.009
134	Battery Charger AL 1860CV-US	1	H-7213	2188.021
135	Wire Brush	1	-----	1821.901.004
136	Screw Driver, Crosstip	1	-----	1821.901.006
137	Angle-Wrench, Hexagon	1	-----	1821.901.007
138	Option: Protection Plate-Set	1	H-2385-PPLT	2189.002
139	Counter Sunk Screw	5	H-2385-24	1911.804.064
140	Option: Protection Cover (Includes 140, 141, 142)	1	H-2385-PROC	2189.003
141	PT Screw	2	H-2385-136	1914.635.300
142	PT Screw	2	-----	1914.630.140
143	Option: Suspension Bow-Set	1	-----	2189.001
144	Cylinder Screw	3	-----	1911.004.208
145	Cylinder Screw	2	-----	1911.005.168
146	Mains Connector 115V US	1	-----	2188.012

ULINE H-5343

**HERRAMIENTA AUTOMÁTICA
COMBINADA PARA FLEJE
DE UNIÓN SIN SELLO**

800-295-5510
uline.mx



#	DESCRIPCIÓN	CANT.	NO. DE PARTE DE ULINE	NO. DE PARTE DEL FABRICANTE
30	Rueda de Tensión	1	H-2385-WHEEL	1821.047.013
32	Placa Dentada	1	H-2385-TOOTH	1821.048.015
59	Motor Completo	1	-----	1821.140.088
103	Cuchilla	1	H-2385-KNIFE	1821.209.019
122	Tablero del Circuito Impreso	1	-----	1821.152.094
133	Batería de Iones de Litio de 14.4 V/2.6 Ah, US	1	H-5343-BATT	2187.009

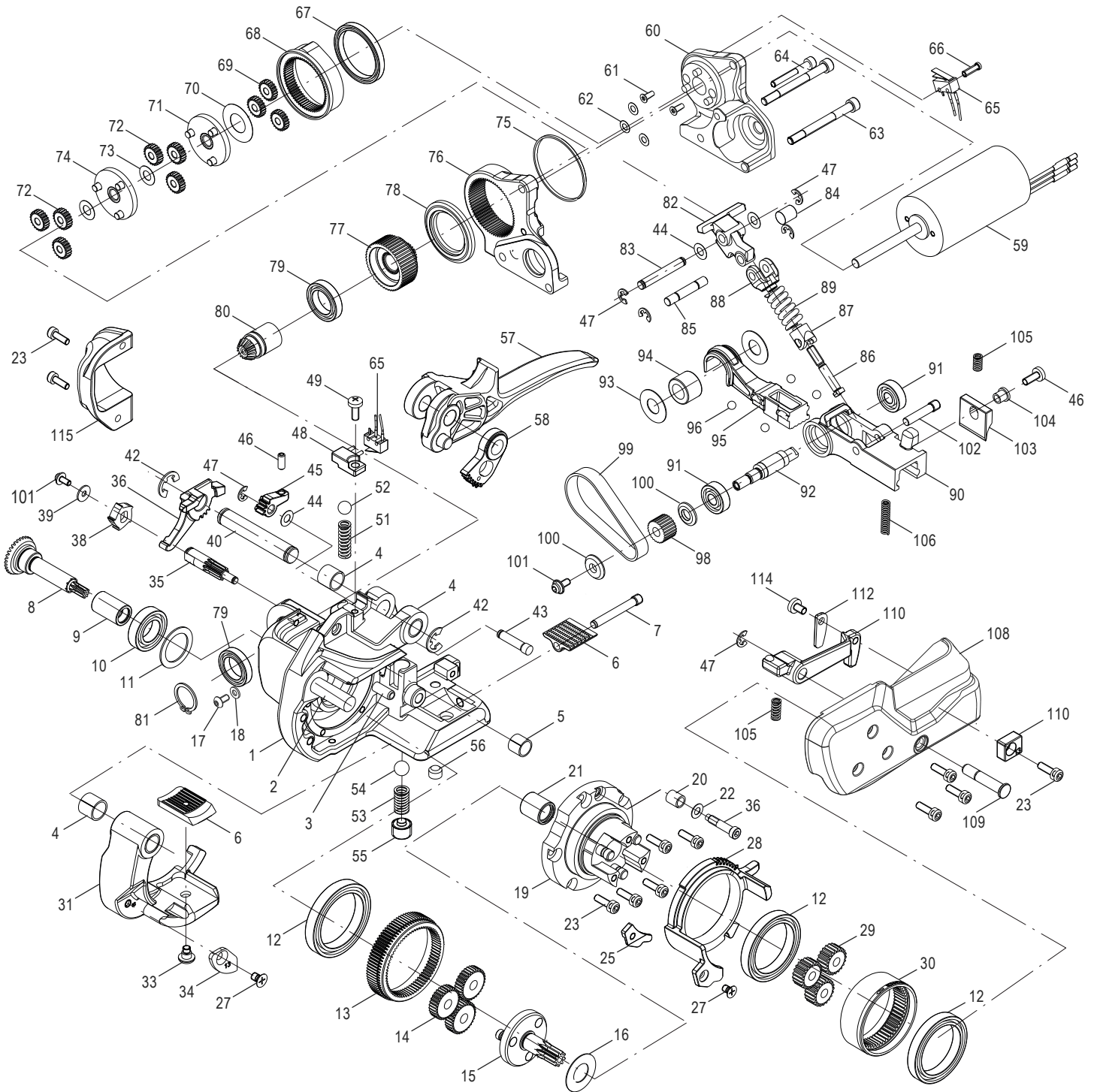
 **NOTA:** Para un diagrama de partes más detallado, consulte las siguientes páginas.

ULINE H-5343

800-295-5510

uline.mx

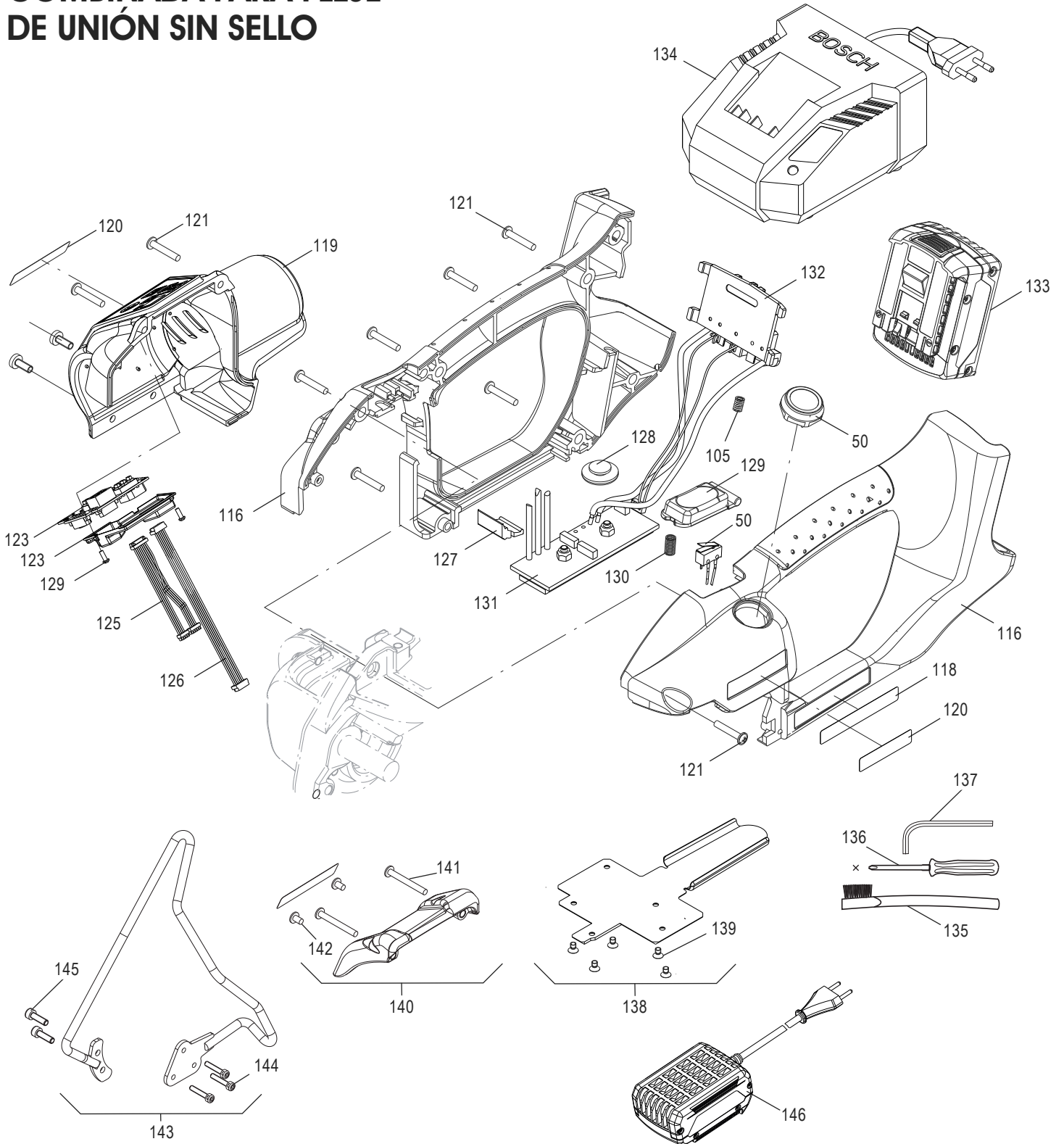
**HERRAMIENTA AUTOMÁTICA
COMBINADA PARA FLEJE
DE UNIÓN SIN SELLO**



ULINE H-5343

800-295-5510
uline.mx

HERRAMIENTA AUTOMÁTICA COMBINADA PARA FLEJE DE UNIÓN SIN SELLO



**HERRAMIENTA AUTOMÁTICA
COMBINADA PARA FLEJE
DE UNIÓN SIN SELLO**

#	DESCRIPCIÓN	CANT.	NO. DE PARTE DE ULINE	NO. DE PARTE DEL FABRICANTE
1	Placa de Base Completa, Incluye Pos. 2-6, 13, 131	1	H-2385BASEPL	1832.011.170
2	Perno Cilíndrico	1	-----	1921.310.501
3	Pasador del Rodillo	1	-----	1921.906.262
4	Balero Deslizable	4	-----	1935.510.100
5	Balero Deslizable	1	-----	1935.508.080
6	Placa Dentada Inferior	1	H-2385-THBTM	1832.022.109
7	Tornillo de Ajuste	1	H-2386-SETSW	1832.022.055
8	Rueda Biselada con Piñón	1	H-2385-BVWHL	1821.061.018
9	Balero de Aguja de Giro Libre	1	-----	1926.502.100
10	Balero de Bolas	1	-----	1930.190.154
11	Disco Espaciador	1	H-2385-SDISK	1917.411.208
12	Balero de Bolas	3	H-2385-BEAR	1930.180.356
13	Rueda de Bloqueo	1	H-2385-BWHL	1832.039.211
14	Rueda Planetaria, 1er Paso	3	-----	1821.060.016
15	SopORTE Planetario Completo	1	H-2385-PGEAR	1832.039.165
16	Espaciador	1	-----	1917.401.125
17	Tornillo de Cabeza Alomada	1	-----	1912.804.084
18	Disco Espaciador	1	-----	1917.411.048
19	Brida Completa, Incluye Pos. 35, 36	1	-----	1832.039.197
20	Balero Deslizable	1	H-2386-20SB	1935.504.060
21	Balero de Aguja	1	H-1334-63	1933.710.150
22	Disco Espaciador	1	-----	1917.411.043
23	Tornillo Cilíndrico	11	H-2385-22	1911.004.127
24	Guía del Fleje 9mm	1	-----	1832.031.046
25	Guía del Fleje 13mm	1	H-2386-13STG	1832.031.051
26	Tornillo Avellanado	2	H-2385-24	1911.804.064
27	Tornillo Avellanado	2	-----	1911.804.108
28	Disco de Leva	1	H-2385-CMDSK	1832.039.207
29	Rueda Planetaria, 2do Paso	3	H-2385-PLANT	1821.060.014
30	Rueda de Tensión	1	H-2385-WHEEL	1821.047.013
31	Balancín Completo, Incluye Pos. 5	1	-----	1832.031.083
32	Placa Dentada	1	H-2385-TOOTH	1821.048.015
33	Tornillo de Cabeza Alomada	1	H-7328	1832.039.200
34	Tope del Fleje, Frontal 9 mm	1	-----	1832.031.093
35	Eje con Seguro	1	H-2385-PAWL	1832.039.214
36	Perno Roscado (Rosca hacia la Izquierda)	1	-----	1832.039.248
37	Eje con Seguro	1	-----	1832.039.249
38	Llanta con Seguro	1	-----	1832.039.213
39	Rondana	1	-----	1917.809.048
40	Perno	1	H-2385-BLT35	1832.039.208

**HERRAMIENTA AUTOMÁTICA
COMBINADA PARA FLEJE
DE UNIÓN SIN SELLO**

#	DESCRIPCIÓN	CANT.	NO. DE PARTE DE ULINE	NO. DE PARTE DEL FABRICANTE
41	Seguro de Bloqueo	1	H-2385-BPAWL	1832.031.057
42	Anillo Retenedor	2	H-2386-RRING	1920.108.102
43	Perno	1	H-2385-BLT38	1832.022.186
44	Disco Espaciador	3	-----	1917.411.052
45	Leva de Reinicio	1	H-2385-RSTCA	1832.022.185
46	Tornillo de Ajuste	1	H-2385-41	1910.404.104
47	Anillo Retenedor	6	H-2385RRING2	1920.104.072
48	Microinterruptor de Soporte	1	H-2385-43	1832.031.060
49	Tornillo de Cabeza Alomada	4	H-2385-PANHD	1912.404.104
50	Cables para Soldar	1	H-2385-CABL	1821.151.017
51	Resorte de Compresión	1	H-2385-45	1821.010.095
52	Bola	1	H-1274GLOB	1925.010.802
53	Resorte de Compresión	1	H-2385-48	1821.010.092
54	Bola	1	H-2385-BALL	1925.010.902
55	Tornillo de Ajuste	1	H-2385-50	1832.039.210
56	Tornillo de Ajuste	1	H-2385-SSCRW	1910.408.064
57	Palanca de Balancín Completa	1	H-2385-52	1832.031.061
58	Palanca Dentada	1	H-2385-LEVER	1832.039.199
59	Motor Completo	1	-----	1821.140.088
60	Soporte de Motor Completo	1	-----	1832.022.221
61	Tornillo Avellanado	2	-----	1912.203.086
62	Disco Espaciador	3	H-2385-SPDSK	1917.411.041
63	Tornillo de Bloqueo	2	H-2386-62	1821.027.037
64	Tornillo Cilíndrico	1	-----	1911.104.304
65	Cables de Tensión	1	H-2385-60	1821.151.016
66	Tornillo de Cabeza Alomada	1	H-2385-PHD61	1912.401.104
67	Balero de Bolas	1	H-2386-BEAR	1930.170.302
68	Leva Excéntrica	1	H-2385-ECAM	1832.022.160
69	Rueda Planetaria, 3er Paso	3	H-2385PWHEEL	1821.060.023
70	Disco Espaciador	1	-----	1917.401.122
71	Transportador Completo, 2do Paso	1	H-2385-66	1832.039.203
72	Rueda Planetaria, 2do Paso	6	H-2385-PWHL	1821.060.024
73	Disco Espaciador	2	-----	1917.411.062
74	Transportador Completo, 1er Paso	1	H-2385-69	1832.039.201
75	Aro	1	-----	1821.020.151
76	Soporte de la Cubierta del Motor	1	H-2386-CMSPT	1832.022.196
77	Llanta de la Banda Completa	1	H-2385-BWHEL	1832.039.196
78	Anillo de Inicio	1	H-2385-STDK	1832.022.161
79	Balero de Bolas	2	H-1465-BB54	1930.180.152
80	Rueda Biselada Completa	1	H-2386-61019	1821.061.019

ULINE H-5343**800-295-5510**

uline.mx

**HERRAMIENTA AUTOMÁTICA
COMBINADA PARA FLEJE
DE UNIÓN SIN SELLO**

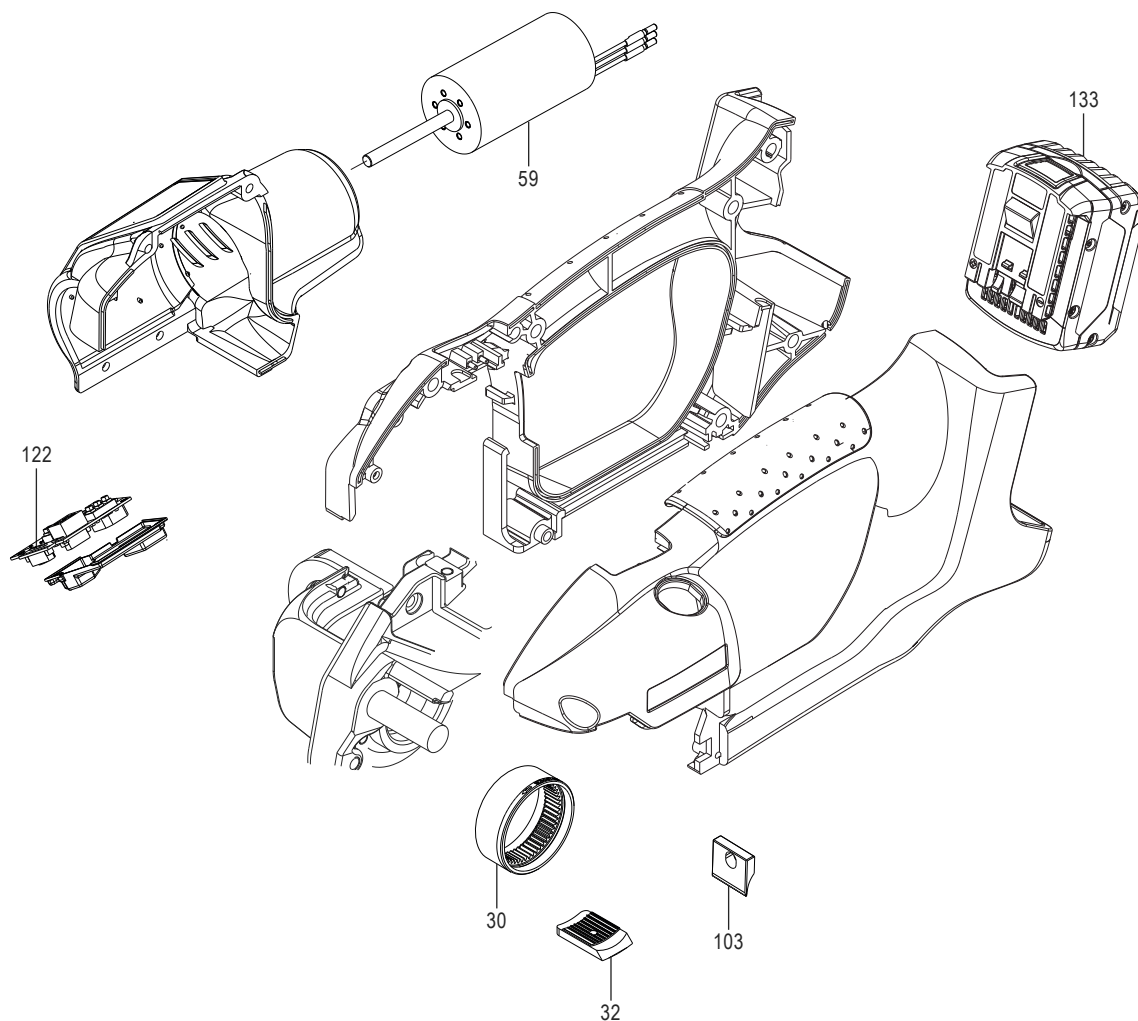
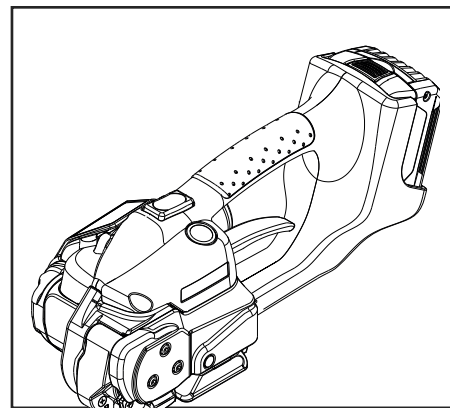
#	DESCRIPCIÓN	CANT.	NO. DE PARTE DE ULINE	NO. DE PARTE DEL FABRICANTE
81	Anillo Retenedor Externo	1	-----	1920.215.102
82	Leva Intercambiable	1	H-2385-SC	1832.022.184
83	Perno	1	H-2385-PIN	1821.031.055
84	Perno	1	H-2385-BOLT	1832.022.163
85	Perno	1	H-2385-BLT82	1832.022.174
86	Eje Roscado	1	H-2385-SS83	1832.022.180
87	Unión Inferior	1	H-2385-84	1832.022.181
88	Unión Superior	1	H-2385-JTOP	1832.022.182
89	Resorte de Compresión	1	-----	1821.010.098
90	Balero Giratorio	1	H-2385-87	1832.022.171
91	Balero de Bolas	2	H-2385-88BB	1930.100.072
92	Eje Excéntrico	1	H-2385-XSHFT	1832.022.164
93	Disco Espaciador	2	H-2386-SPACR	1917.401.105
94	Balero de Aguja	1	H-2386-NB	1933.210.120
95	Zapata de Soldadura	1	H-2385-92	1832.022.169
96	Bola	4	H-2385-93	1925.010.502
97	Disco de Soporte	1	H-2385-94	1832.022.165
98	Piñón	1	H-2385-PINON	1832.022.139
99	Banda Dentada	1	H-2385-TBELT	1821.067.011
100	Rondana	1	H-2385-WASHR	1821.020.147
101	Tornillo Cilíndrico	2	H-2386-102CS	1911.304.084
102	Perno	1	-----	1832.022.173
103	Cuchilla	1	H-2385-KNIFE	1821.209.019
104	Buje con Brida	1	H-2385-FLNGD	1832.022.049
105	Resorte de Compresión	3	H-2385-SPRNG	1821.010.053
106	Resorte de Compresión	1	H-2385-103	1821.010.020
107	Guía de Fleje de la Palanca Completa	1	H-2385-STRPG	1832.042.044
108	Cubierta Lateral	1	-----	1832.011.253
109	Perno del Balero	1	H-2385-106	1821.035.007
110	Guía Interna Trasera 9mm	1	-----	1832.041.020
111	Guía Interna Trasera 13mm	1	-----	1832.041.019
112	Guía de Fleje Trasera 9mm	1	-----	1832.042.047
113	Guía de Fleje Trasera 13mm	1	H-2385-109	1832.042.043
114	Tornillo de Cabeza Alomada	1	H-2386-PANHD	1912.404.064
115	Cubierta del Equipo	1	H-2385-GCVR	1832.011.171
116	Partes de la Carcasa, Azul	1	-----	1832.011.250
117	Placa de Rótulo	1	-----	1821.091.076
118	Placa del Tipo	1	-----	1821.091.075
119	Cubierta de Motor Completa	1	H-2386-MTRCV	1832.011.201
120	Placa con Nombre	1	H-2385-NMPLT	1821.090.021

**HERRAMIENTA AUTOMÁTICA
COMBINADA PARA FLEJE
DE UNIÓN SIN SELLO**

#	DESCRIPCIÓN	CANT.	NO. DE PARTE DE ULINE	NO. DE PARTE DEL FABRICANTE
121	Tornillo PT	9	H-1274-162	1914.635.200
122	Tablero del Circuito Impreso	1	-----	1821.152.094
123	Cubierta de Protección PCB	1	H-2386-PCB	1832.061.016
124	Tornillo PT	2	-----	1914.622.062
125	Cable Intermedio	1	H-2386-CABLE	1821.151.015
126	Cable de Señal	1	H-2386-51018	1821.151.018
127	Junta	1	H-2386-76018	1821.076.018
128	Placa de Protección	1	H-2385-PUCK	1832.011.181
129	Botón Interruptor	1	-----	1832.011.184
130	Resorte de Compresión	1	H-1274SPRNG3	1821.010.054
131	Tablero del Circuito Impreso Completo	1	H-2385-126	1821.152.072
132	Placa de Contacto de 14.4V	1	H-2385-CPLAT	1821.152.074
133	Batería de Iones de Litio de 14.4V/2.6 Ah, US	1	H-5343-BATT	2187.009
134	Cargador para Batería AL 1860CV-US	1	H-7213	2188.021
135	Cepillo de Alambre	1	-----	1821.901.004
136	Desarmador De Cruz	1	-----	1821.901.006
137	Llave de Ángulo Hexagonal	1	-----	1821.901.007
138	Opción: Placa de Protección - Set	1	H-2385-PPLT	2189.002
139	Tornillo Avellanado	5	H-2385-24	1911.804.064
140	Opción: Cubierta de Protección (Incluye 140, 141, 142)	1	H-2385-PROC	2189.003
141	Tornillo PT	2	H-2385-136	1914.635.300
142	Tornillo PT	2	-----	1914.630.140
143	Opción: Arco de Suspensión - Set	1	-----	2189.001
144	Tornillo Cilíndrico	3	-----	1911.004.208
145	Tornillo Cilíndrico	2	-----	1911.005.168
146	Conector Principal 115V US	1	-----	2188.012

ULINE H-5343
OUTIL DE CERCLAGE
MULTIFONCTIONNEL
AUTOMATIQUE SANS JOINTS

1-800-295-5510
 uline.ca



#	DESCRIPTION	QTÉ	RÉF. ULINE	RÉF. DU FABRICANT
30	Roue de tension	1	H-2385-WHEEL	1821.047.013
32	Plaque dentée	1	H-2385-TOOTH	1821.048.015
59	Moteur complet	1	-----	1821.140.088
103	Couteau	1	H-2385-KNIFE	1821.209.019
122	Carte de circuit imprimée	1	-----	1821.152.094
133	Batterie 14,4 volts/2,6 Ah Li-Ion, É.-U.	1	H-5343-BATT	2187.009

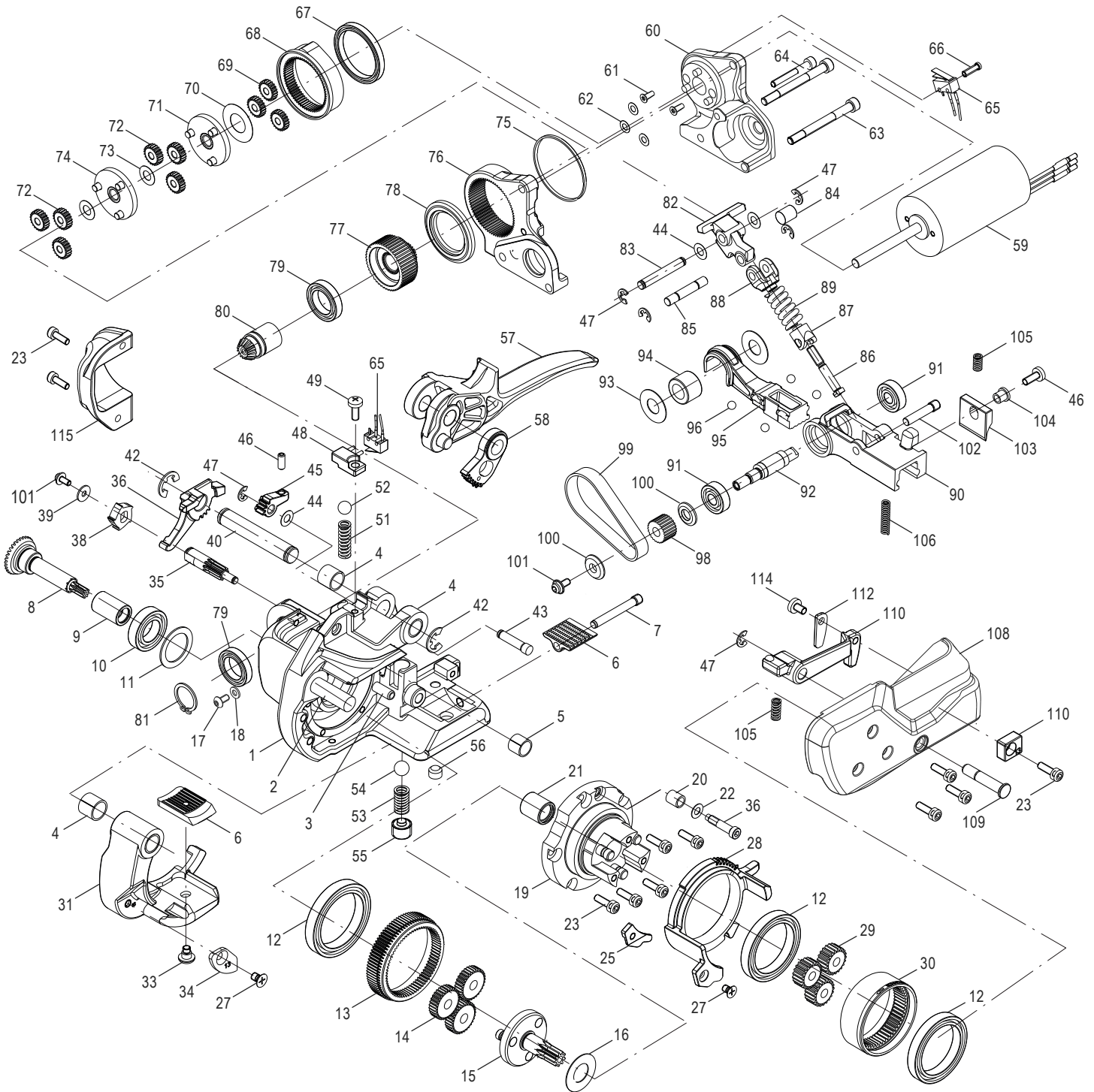
 **REMARQUE :** Pour un schéma de pièces plus détaillé, voir les pages suivantes.

ULINE H-5343

1-800-295-5510

uline.ca

**OUTIL DE CERCLAGE
MULTIFONCTIONNEL
AUTOMATIQUE SANS JOINTS**

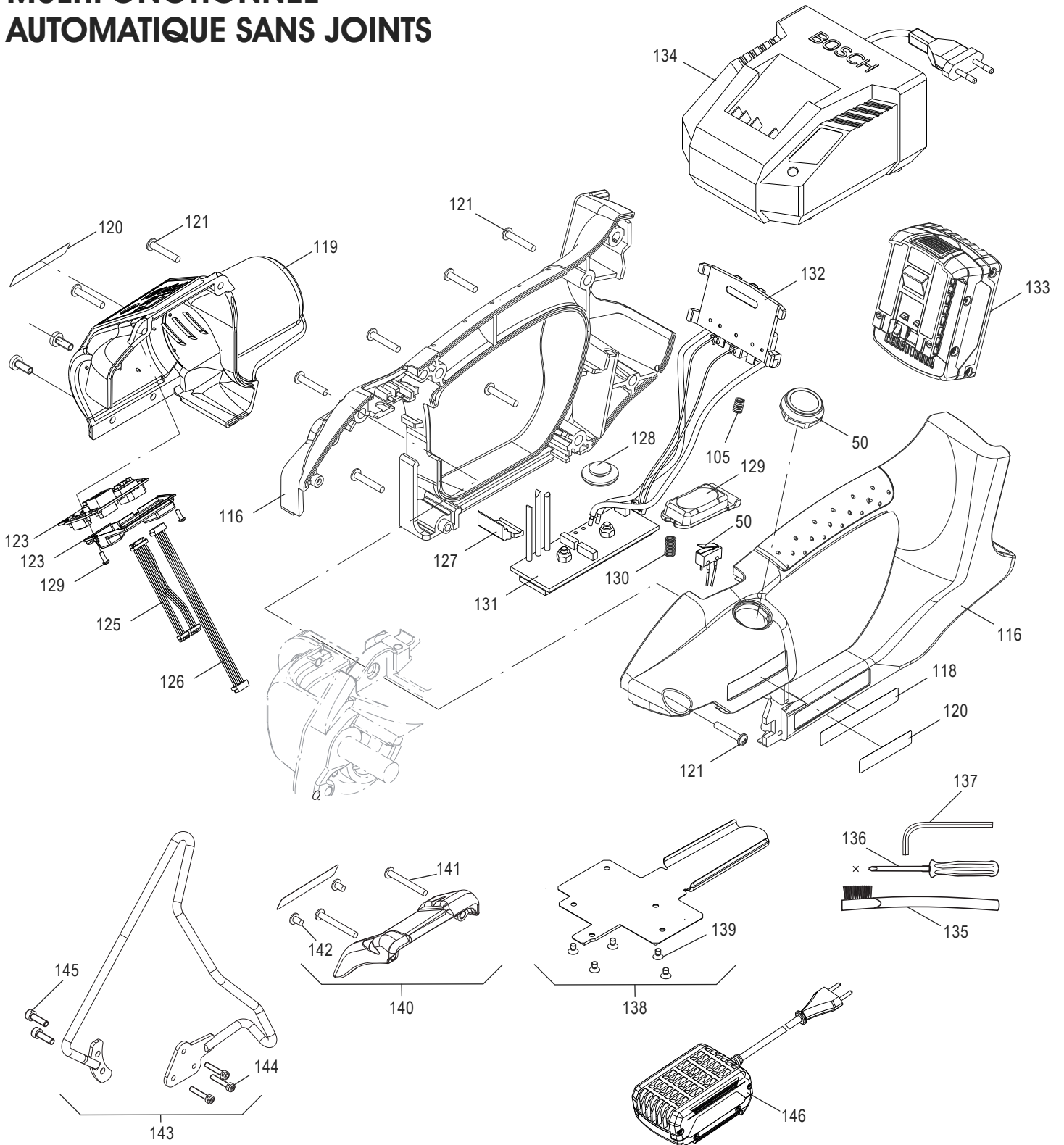


ULINE H-5343

**OUTIL DE CERCLAGE
MULTIFONCTIONNEL
AUTOMATIQUE SANS JOINTS**

1-800-295-5510

uline.ca



**OUTIL DE CERCLAGE
MULTIFONCTIONNEL
AUTOMATIQUE SANS JOINTS**

#	DESCRIPTION	QTÉ	RÉF. ULINE	RÉF. DU FABRICANT
1	Plaque de base complète, inclus pos. 2-6, 13, 131	1	H-2385BASEPL	1832.011.170
2	Cheville de rotor	1	-----	1921.310.501
3	Goupille cylindrique	1	-----	1921.906.262
4	Palier lisse	4	-----	1935.510.100
5	Palier lisse	1	-----	1935.508.080
6	Base de plaque dentée	1	H-2385-THBTM	1832.022.109
7	Vis de réglage	1	H-2386-SETSW	1832.022.055
8	Roue en biseau avec pignon	1	H-2385-BVWHL	1821.061.018
9	Roulement à aiguille sans roue	1	-----	1926.502.100
10	Roulement à bille	1	-----	1930.190.154
11	Disque d'entretoise	1	H-2385-SDISK	1917.411.208
12	Roulement à bille	3	H-2385-BEAR	1930.180.356
13	Roue de blocage	1	H-2385-BWHL	1832.039.211
14	Roue planétaire, 1re étape	3	-----	1821.060.016
15	Support planétaire complet	1	H-2385-PGEAR	1832.039.165
16	Entretoise	1	-----	1917.401.125
17	Vis à tête cylindrique bombée	1	-----	1912.804.084
18	Disque d'entretoise	1	-----	1917.411.048
19	Collerette complète, inclus pos. 35, 36	1	-----	1832.039.197
20	Palier lisse	1	H-2386-20SB	1935.504.060
21	Douille d'aiguille	1	H-1334-63	1933.710.150
22	Disque d'entretoise	1	-----	1917.411.043
23	Vis cylindrique	11	H-2385-22	1911.004.127
24	Guide de sangle 9 mm	1	-----	1832.031.046
25	Guide de sangle 13 mm	1	H-2386-13STG	1832.031.051
26	Vis à tête fraisée	2	H-2385-24	1911.804.064
27	Vis à tête fraisée	2	-----	1911.804.108
28	Disque à cames	1	H-2385-CMDSK	1832.039.207
29	Roue planétaire, 2e étape	3	H-2385-PLANT	1821.060.014
30	Roue de tension	1	H-2385-WHEEL	1821.047.013
31	Bascule complète, inclus pos. 5	1	-----	1832.031.083
32	Plaque dentée	1	H-2385-TOOTH	1821.048.015
33	Vis à tête cylindrique bombée	1	H-7328	1832.039.200
34	Butée de sangle, avant 9 mm	1	-----	1832.031.093
35	Arbre à cliquet	1	H-2385-PAWL	1832.039.214
36	Boulon fileté (filetage à gauche)	1	-----	1832.039.248
37	Arbre à cliquet	1	-----	1832.039.249
38	Roue à cliquet	1	-----	1832.039.213
39	Rondelle	1	-----	1917.809.048
40	Boulon	1	H-2385-BLT35	1832.039.208

**OUTIL DE CERCLAGE
MULTIFONCTIONNEL
AUTOMATIQUE SANS JOINTS**

#	DESCRIPTION	QTÉ	RÉF. ULINE	RÉF. DU FABRICANT
41	Cliquet bloquant	1	H-2385-BPAWL	1832.031.057
42	Bague de retenue	2	H-2386-RRING	1920.108.102
43	Boulon	1	H-2385-BLT38	1832.022.186
44	Disque d'entretoise	3	-----	1917.411.052
45	Came de remise à zéro	1	H-2385-RSTCA	1832.022.185
46	Vis de réglage	1	H-2385-41	1910.404.104
47	Bague de retenue	6	H-2385RRING2	1920.104.072
48	Interrupteur support micro	1	H-2385-43	1832.031.060
49	Vis à tête cylindrique bombée	4	H-2385-PANHD	1912.404.104
50	Câbles de soudage	1	H-2385-CABL	1821.151.017
51	Ressort de compression	1	H-2385-45	1821.010.095
52	Bille	1	H-1274GLOB	1925.010.802
53	Ressort de compression	1	H-2385-48	1821.010.092
54	Bille	1	H-2385-BALL	1925.010.902
55	Vis de réglage	1	H-2385-50	1832.039.210
56	Vis de réglage	1	H-2385-SSCRW	1910.408.064
57	Levier de bascule complet	1	H-2385-52	1832.031.061
58	Levier denté	1	H-2385-LEVER	1832.039.199
59	Moteur complet	1	-----	1821.140.088
60	Support de moteur complet	1	-----	1832.022.221
61	Vis à tête fraisée	2	-----	1912.203.086
62	Disque d'entretoise	3	H-2385-SPDSK	1917.411.041
63	Vis à épaulement	2	H-2386-62	1821.027.037
64	Vis cylindrique	1	-----	1911.104.304
65	Câbles de tension	1	H-2385-60	1821.151.016
66	Vis à tête cylindrique bombée	1	H-2385-PHD61	1912.401.104
67	Roulement à bille	1	H-2386-BEAR	1930.170.302
68	Came excentrique	1	H-2385-ECAM	1832.022.160
69	Roue planétaire, 3e étape	3	H-2385PWHEEL	1821.060.023
70	Disque d'entretoise	1	-----	1917.401.122
71	Transporteur complet, 2e étape	1	H-2385-66	1832.039.203
72	Roue planétaire, 2e étape	6	H-2385-PWHL	1821.060.024
73	Disque d'entretoise	2	-----	1917.411.062
74	Transporteur complet, 1re étape	1	H-2385-69	1832.039.201
75	Bague	1	-----	1821.020.151
76	Support couvercle de moteur	1	H-2386-CMSPT	1832.022.196
77	Roue entraînée par courroie complète	1	H-2385-BWHEL	1832.039.196
78	Disque de démarrage	1	H-2385-STDK	1832.022.161
79	Roulement à bille	2	H-1465-BB54	1930.180.152
80	Roue en biseau complète	1	H-2386-61019	1821.061.019

**OUTIL DE CERCLAGE
MULTIFONCTIONNEL
AUTOMATIQUE SANS JOINTS**

#	DESCRIPTION	QTÉ	RÉF. ULINE	RÉF. DU FABRICANT
81	Bague de retenue externe	1	-----	1920.215.102
82	Came de commutation	1	H-2385-SC	1832.022.184
83	Boulon	1	H-2385-PIN	1821.031.055
84	Boulon	1	H-2385-BOLT	1832.022.163
85	Boulon	1	H-2385-BLT82	1832.022.174
86	Arbre vissé	1	H-2385-SS83	1832.022.180
87	Tringlerie inférieure	1	H-2385-84	1832.022.181
88	Tringlerie supérieure	1	H-2385-JTOP	1832.022.182
89	Ressort de compression	1	-----	1821.010.098
90	Palier de rotule	1	H-2385-87	1832.022.171
91	Roulement à bille	2	H-2385-88BB	1930.100.072
92	Arbre excentrique	1	H-2385-XSHFT	1832.022.164
93	Disque d'entretoise	2	H-2386-SPACR	1917.401.105
94	Roulement à aiguille	1	H-2386-NB	1933.210.120
95	Baguette à souder	1	H-2385-92	1832.022.169
96	Bille	4	H-2385-93	1925.010.502
97	Disque de support	1	H-2385-94	1832.022.165
98	Pignon	1	H-2385-PINON	1832.022.139
99	Courroie dentée	1	H-2385-TBELT	1821.067.011
100	Rondelle	1	H-2385-WASHR	1821.020.147
101	Vis cylindrique	2	H-2386-102CS	1911.304.084
102	Boulon	1	-----	1832.022.173
103	Couteau	1	H-2385-KNIFE	1821.209.019
104	Douille a bride	1	H-2385-FLNGD	1832.022.049
105	Ressort de compression	3	H-2385-SPRNG	1821.010.053
106	Ressort de compression	1	H-2385-103	1821.010.020
107	Guide de sangle de levier complet	1	H-2385-STRPG	1832.042.044
108	Couvercle latéral	1	-----	1832.011.253
109	Boulon de palier	1	H-2385-106	1821.035.007
110	Guide interne arrière 9 mm	1	-----	1832.041.020
111	Guide interne arrière 13 mm	1	-----	1832.041.019
112	Guide sangle arrière 9 mm	1	-----	1832.042.047
113	Guide sangle arrière 13 mm	1	H-2385-109	1832.042.043
114	Vis à tête cylindrique bombée	1	H-2386-PANHD	1912.404.064
115	Couvercle d'engrenage	1	H-2385-GCVR	1832.011.171
116	Pièces de boîtier, bleu	1	-----	1832.011.250
117	Plaque signalétique	1	-----	1821.091.076
118	Plaque type	1	-----	1821.091.075
119	Couvercle de moteur complet	1	H-2386-MTRCV	1832.011.201
120	Plaque d'identification	1	H-2385-NMPLT	1821.090.021

**OUTIL DE CERCLAGE
MULTIFONCTIONNEL
AUTOMATIQUE SANS JOINTS**

#	DESCRIPTION	QTÉ	RÉF. ULINE	RÉF. DU FABRICANT
121	Vis PT	9	H-1274-162	1914.635.200
122	Carte de circuit imprimée	1	-----	1821.152.094
123	Housse de protection PCB	1	H-2386-PCB	1832.061.016
124	Vis PT	2	-----	1914.622.062
125	Câble intermédiaire	1	H-2386-CABLE	1821.151.015
126	Câble de signal	1	H-2386-51018	1821.151.018
127	Joint d'étanchéité	1	H-2386-76018	1821.076.018
128	Plaque de protection	1	H-2385-PUCK	1832.011.181
129	Bouton d'interrupteur	1	-----	1832.011.184
130	Ressort de compression	1	H-1274SPRNG3	1821.010.054
131	Carte de circuit imprimée complète	1	H-2385-126	1821.152.072
132	Plaque de contact 14,4 volts	1	H-2385-CPLAT	1821.152.074
133	Batterie 14,4 volts, 2,6 Ah Li-Ion, É.-U.	1	H-5343-BATT	2187.009
134	Chargeur de batterie AL 1860CV-É.-U.	1	H-7213	2188.021
135	Brosse métallique	1	-----	1821.901.004
136	Tournevis, étoilé	1	-----	1821.901.006
137	Clé angulaire, hexagonale	1	-----	1821.901.007
138	Option : Ensemble plaque de protection	1	H-2385-PPLT	2189.002
139	Vis à tête fraisée	5	H-2385-24	1911.804.064
140	Option : Housse de protection (inclus 140, 141, 142)	1	H-2385-PROC	2189.003
141	Vis PT	2	H-2385-136	1914.635.300
142	Vis PT	2	-----	1914.630.140
143	Option : Ensemble de boucle de suspension	1	-----	2189.001
144	Vis cylindrique	3	-----	1911.004.208
145	Vis cylindrique	2	-----	1911.005.168
146	Connecteurs principaux 115 volts É.-U.	1	-----	2188.012