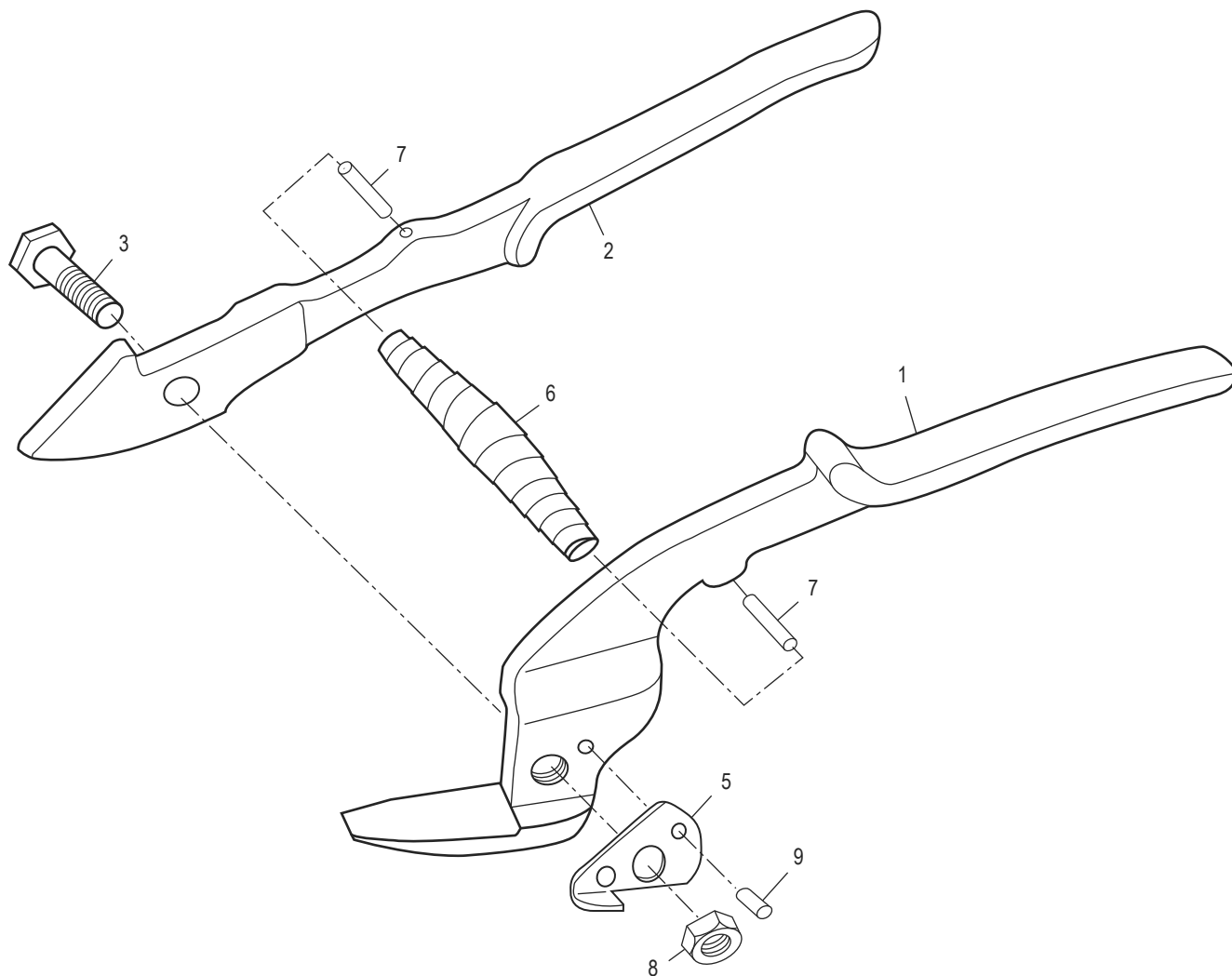
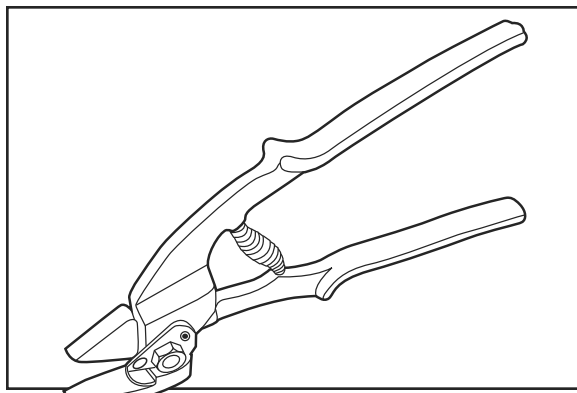


# ULINE H-40

## STANDARD STEEL STRAPPING CUTTER

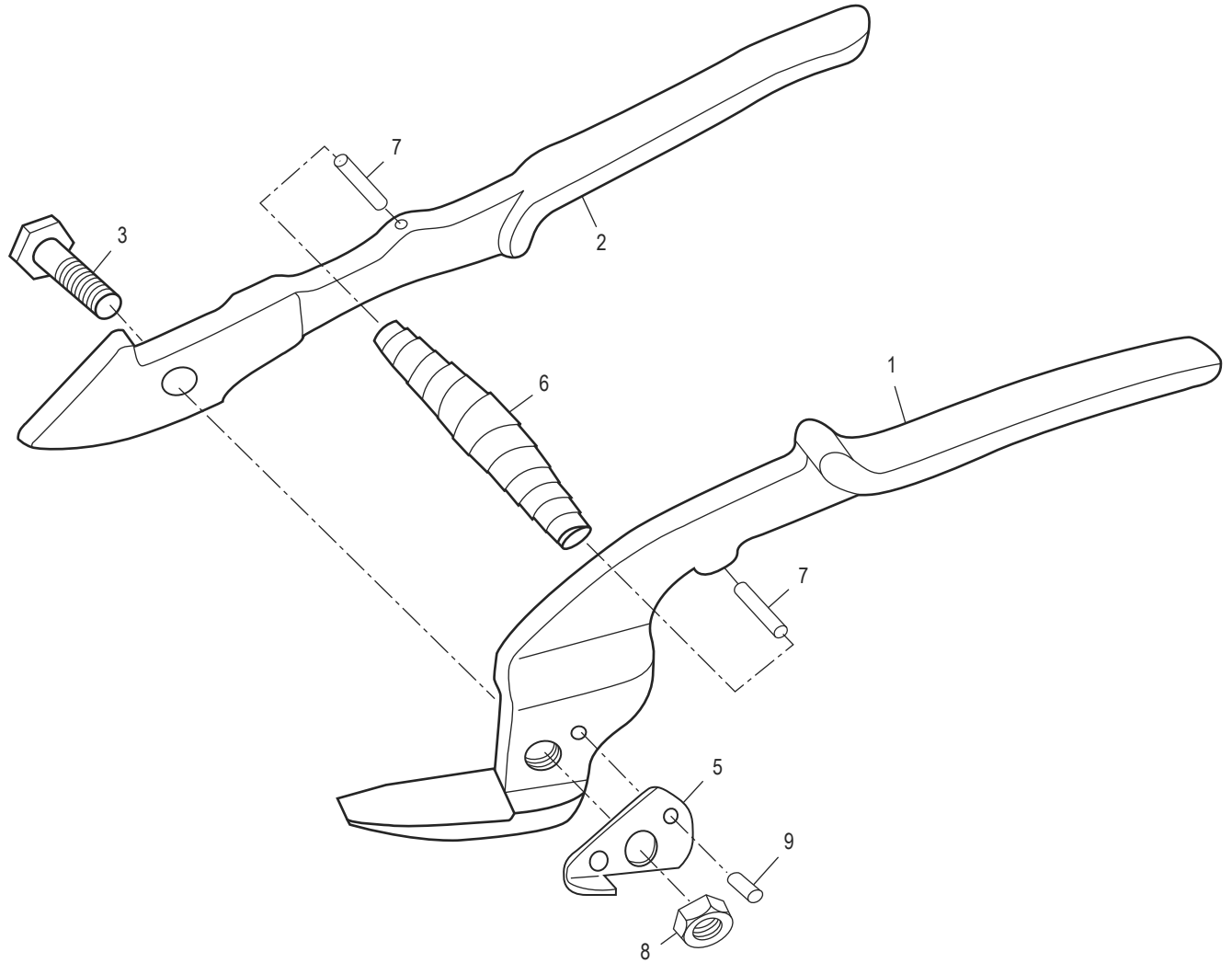
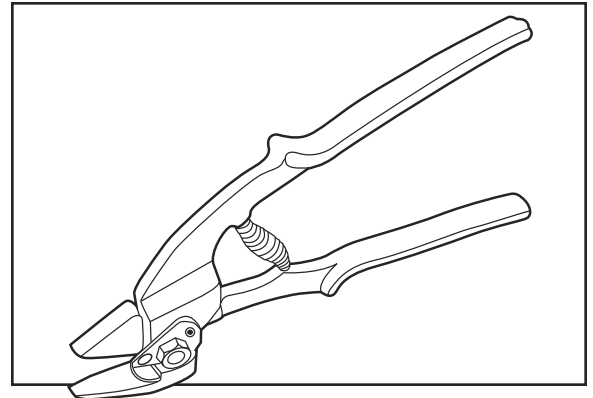
1-800-295-5510  
 uline.com



#	DESCRIPTION	QTY.	ULINE PART NO.	MFG. PART NO.
1	Fixed Blade	1	-----	H1000-11
2	Moving Blade	1	H-40-MBLADE	H1000-12
3	Screw	1	-----	11-F08-025-H
5	Guard	1	-----	H1000-05
6	Spring	1	H-40-6	H1000-06
7	Roll Pin	2	-----	6P-2514
8	Nut	1	-----	31-F08-06Z
9	Pin	1	-----	6P-308

**ULINE H-40**  
**CORTADORA**  
**ESTÁNDAR PARA**  
**FLEJE DE ACERO**

800-295-5510  
 uline.mx

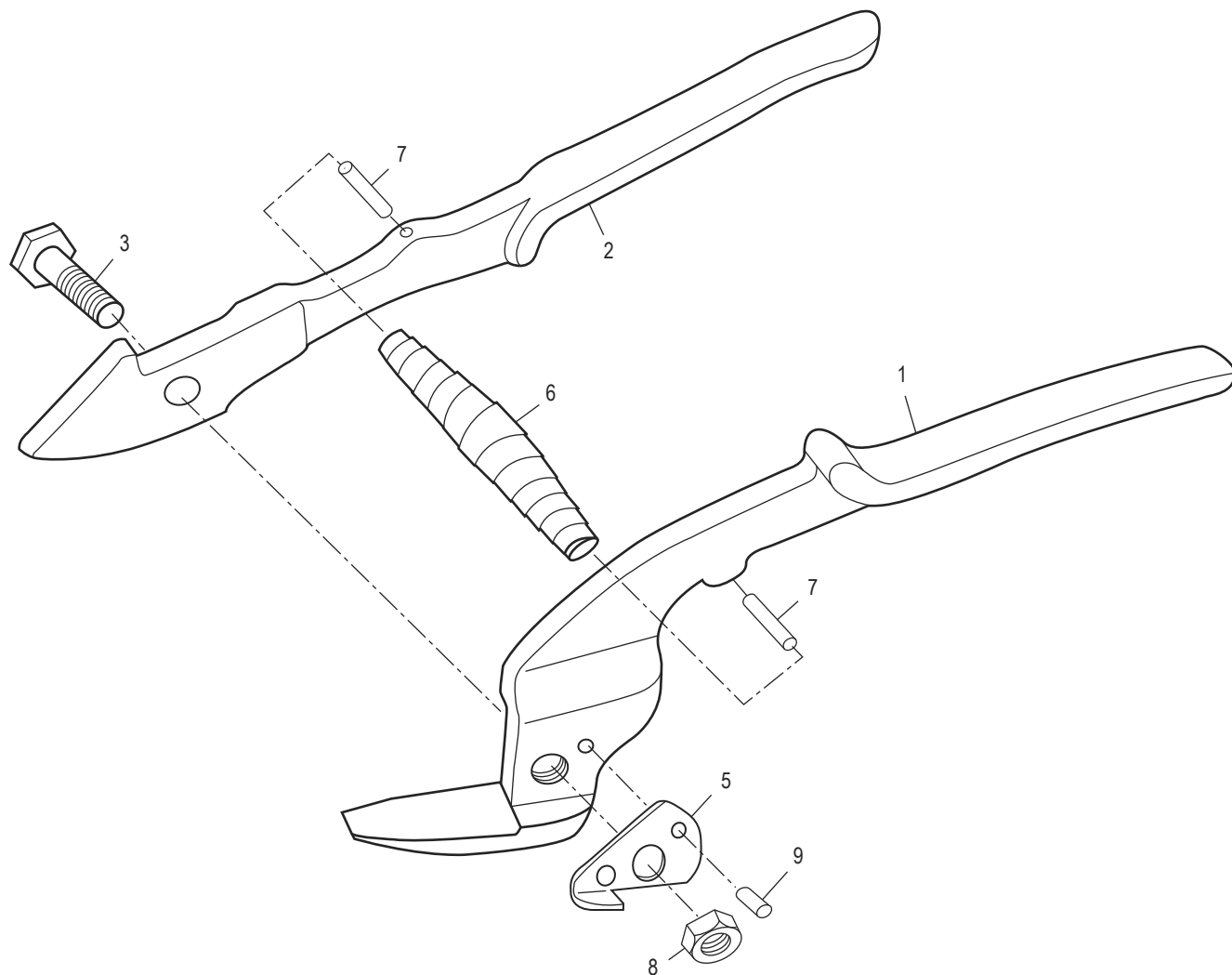
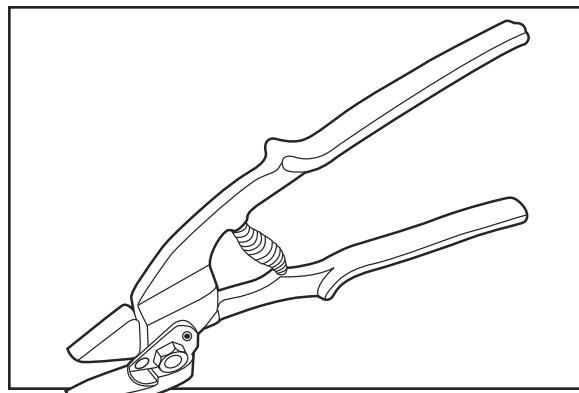


#	DESCRIPCIÓN	CANT.	NO. DE PARTE DE ULINE	NO. DE PARTE DEL FABRICANTE
1	Hoja Fija	1	-----	H1000-11
2	Hoja Móvil	1	H-40-MBLADE	H1000-12
3	Tornillo	1	-----	11-F08-025-H
5	Protector	1	-----	H1000-05
6	Resorte	1	H-40-6	H1000-06
7	Pasador del rodillo	2	-----	6P-2514
8	Tuerca	1	-----	31-F08-06Z
9	Pasador	1	-----	6P-308

**ULINE H-40**

**OUTIL DE COUPE  
POUR FEUILLARD DE  
CERCLAGE EN ACIER  
STANDARD**

1-800-295-5510  
uline.ca



#	DESCRIPTION	QTÉ	RÉF. ULINE	RÉF. DU FABRICANT
1	Lame fixe	1	-----	H1000-11
2	Lame mobile	1	H-40-MBLADE	H1000-12
3	Vis	1	-----	11-F08-025-H
5	Protecteur	1	-----	H1000-05
6	Ressort	1	H-40-6	H1000-06
7	Goupille cylindrique	2	-----	6P-2514
8	Écrou	1	-----	31-F08-06Z
9	Goupille	1	-----	6P-308