

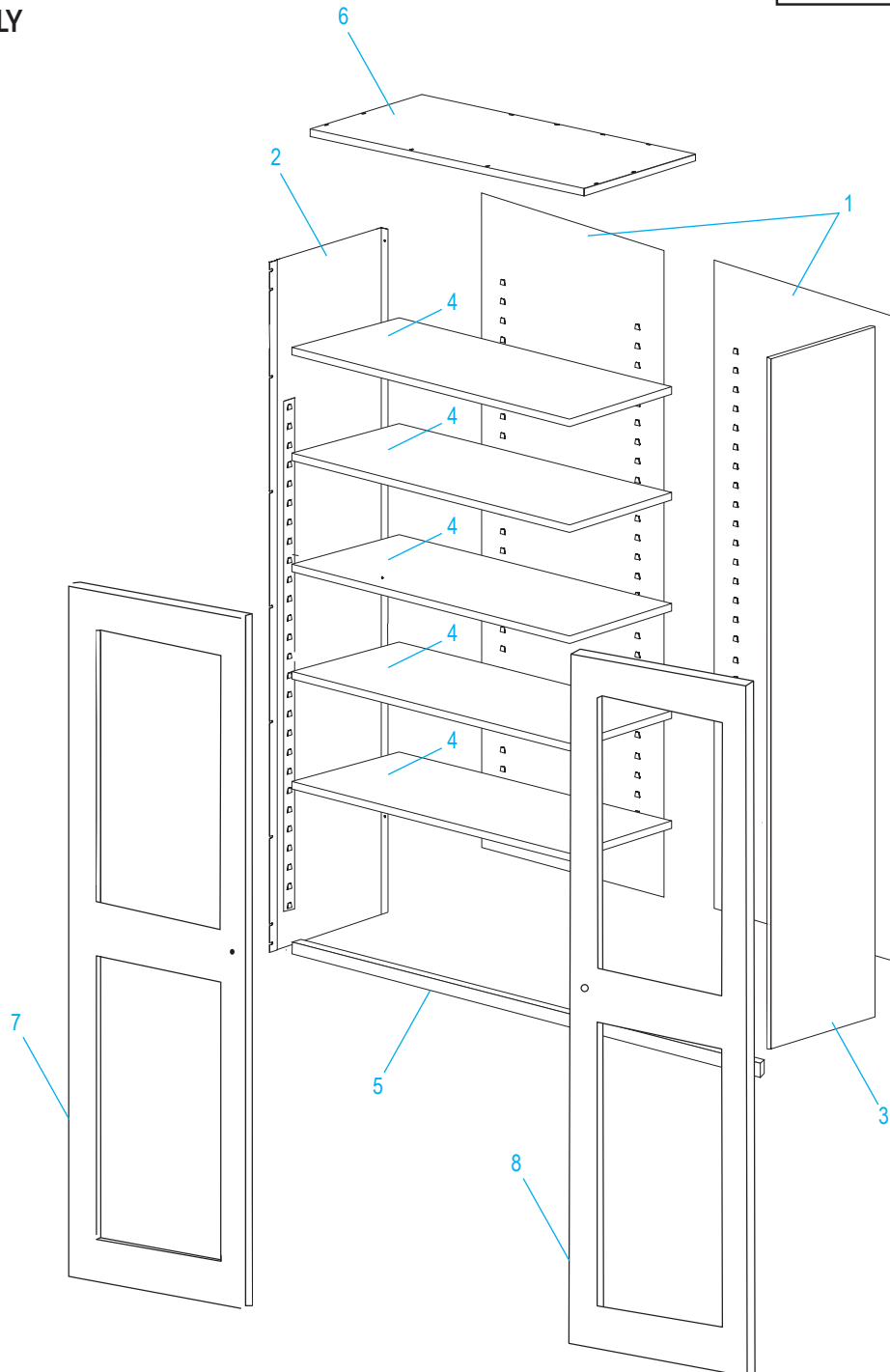
ULINE H-3594 CLEAR-VIEW CABINET

1-800-295-5510
uline.com

Para Español, vea páginas 4-6.
Pour le français, consulter les pages 7-9.



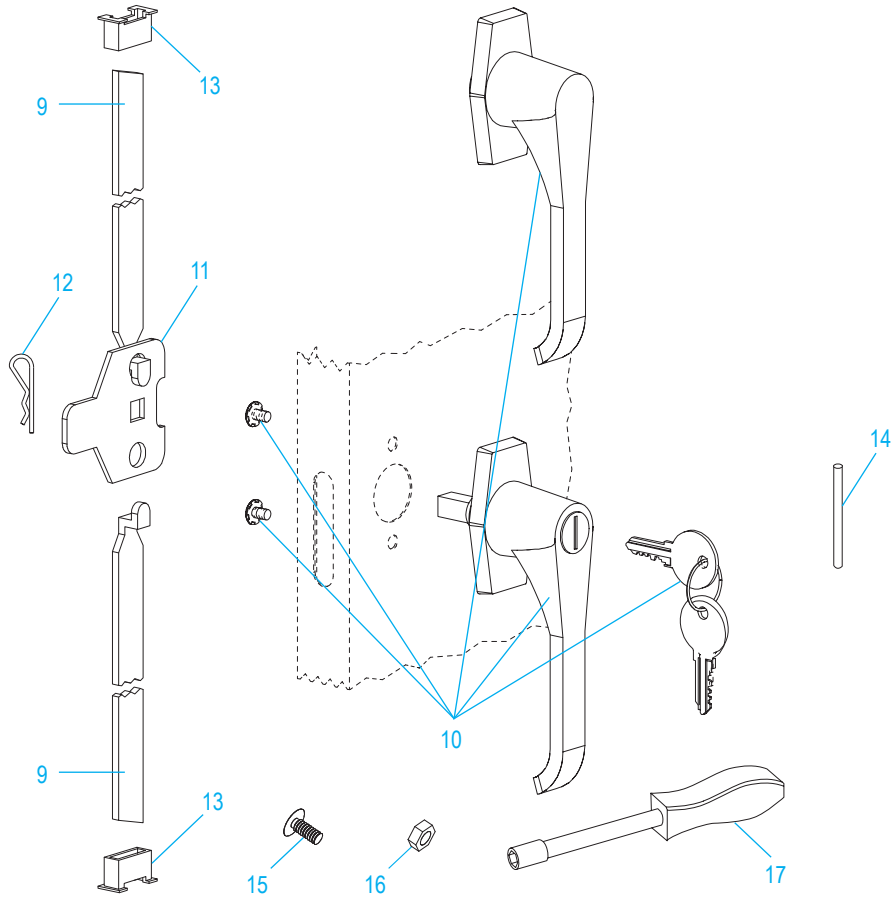
PRIMARY ASSEMBLY



PRIMARY ASSEMBLY PARTS LIST

| # | DESCRIPTION | QTY. | ULINE PART NO. | MFG. PART NO. |
|---|--------------------------|------|----------------|-----------------|
| 1 | Back Panel – Black | 2 | ----- | 055BA-BLACK |
| 1 | Back Panel – Gray | 2 | ----- | 055BA-GRAY |
| 1 | Back Panel – Tan | 2 | ----- | 055BA-PUTTY |
| 2 | Left Side Panel – Black | 1 | ----- | 056LS-BLACK |
| 2 | Left Side Panel – Gray | 1 | ----- | 056LS-GRAY |
| 2 | Left Side Panel – Tan | 1 | ----- | 056LS-PUTTY |
| 3 | Right Side Panel – Black | 1 | ----- | 056RS-BLACK |
| 3 | Right Side Panel – Gray | 1 | ----- | 056RS-GRAY |
| 3 | Right Side Panel – Tan | 1 | ----- | 056RS-PUTTY |
| 4 | Shelf – Black | 5 | H-1871ADD-BL | 307-BLACK |
| 4 | Shelf – Gray | 5 | H-1871ADD-GR | 307-GRAY |
| 4 | Shelf – Tan | 5 | H-1871ADD-T | 307-PUTTY |
| 5 | Sill – Black | 1 | H-3616-SILL | 055SI-BLACK |
| 5 | Sill – Gray | 1 | H-3594-SILL | 055SI-GRAY |
| 5 | Sill – Tan | 1 | H-3616-TSILL | 055SI-PUTTY |
| 6 | Top – Black | 1 | ----- | 056TO-BLACK |
| 6 | Top – Gray | 1 | ----- | 056TO-GRAY |
| 6 | Top – Tan | 1 | ----- | 056TO-PUTTY |
| 7 | Left Door – Black | 1 | ----- | CVD072JLH-BLACK |
| 7 | Left Door – Gray | 1 | ----- | CVD072JLH-GRAY |
| 7 | Left Door – Tan | 1 | ----- | CVD072JLH-PUTTY |
| 8 | Right Door – Black | 1 | ----- | CVD072JRH-BLACK |
| 8 | Right Door – Gray | 1 | ----- | CVD072JRH-GRAY |
| 8 | Right Door – Tan | 1 | ----- | CVD072JRH-PUTTY |

HANDLE ASSEMBLY

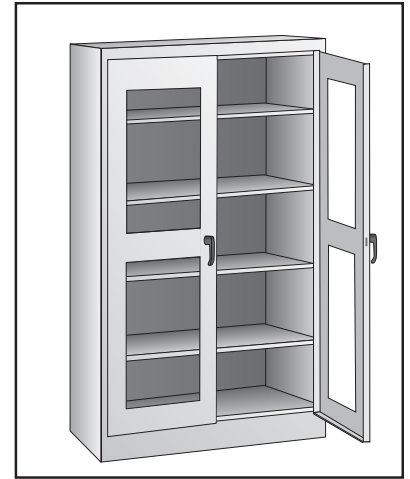


| # | DESCRIPTION | QTY. | ULINE PART NO. | MFG. PART NO. |
|----|--|------|----------------|---------------|
| 9 | Lock Bar (Set) | 1 | H-1223-#8 | 043LB |
| 10 | Locking Handle with Keys and Dummy Handle (Set) | 1 | H-2217-HANDL | ST-LKHND |
| 11 | Locking Cam | 1 | H-1105-13 | 944LC |
| 12 | Cotter Pin | 1 | H-2216-CTRPN | CTRPN |
| 13 | Lock Bar Guide | 2 | H-1105-15 | 944GI |
| 14 | Hinge Pin | 8 | H-1106-16 | 944HP |
| 15 | Bolt (#8-32 x 3/8") | 25 | ----- | ----- |
| 16 | Nut (#8-32) | 35 | ----- | ----- |
| 17 | Nut Driver | 1 | H-1224-TOOL2 | TOOL-2 |
| | Replacement Hardware Pack (Not Included) Bolts #8-32 x 3/8" (72), Nuts #8-32 (72) | 1 | H-1224-19 | HW-72 |

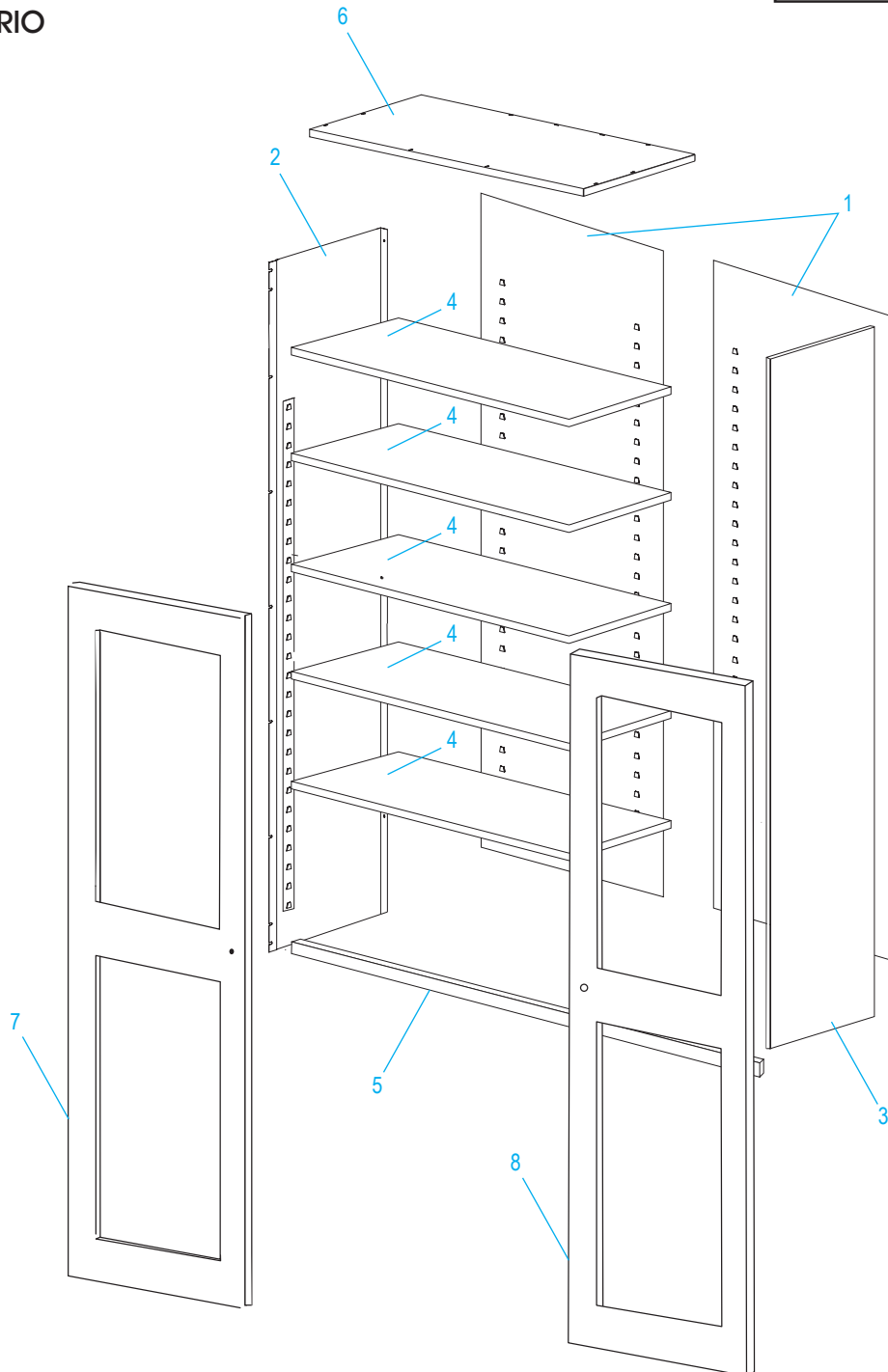
ULINE H-3594

**GABINETE CON FRENTE
TRANSPARENTE**

800-295-5510
uline.mx



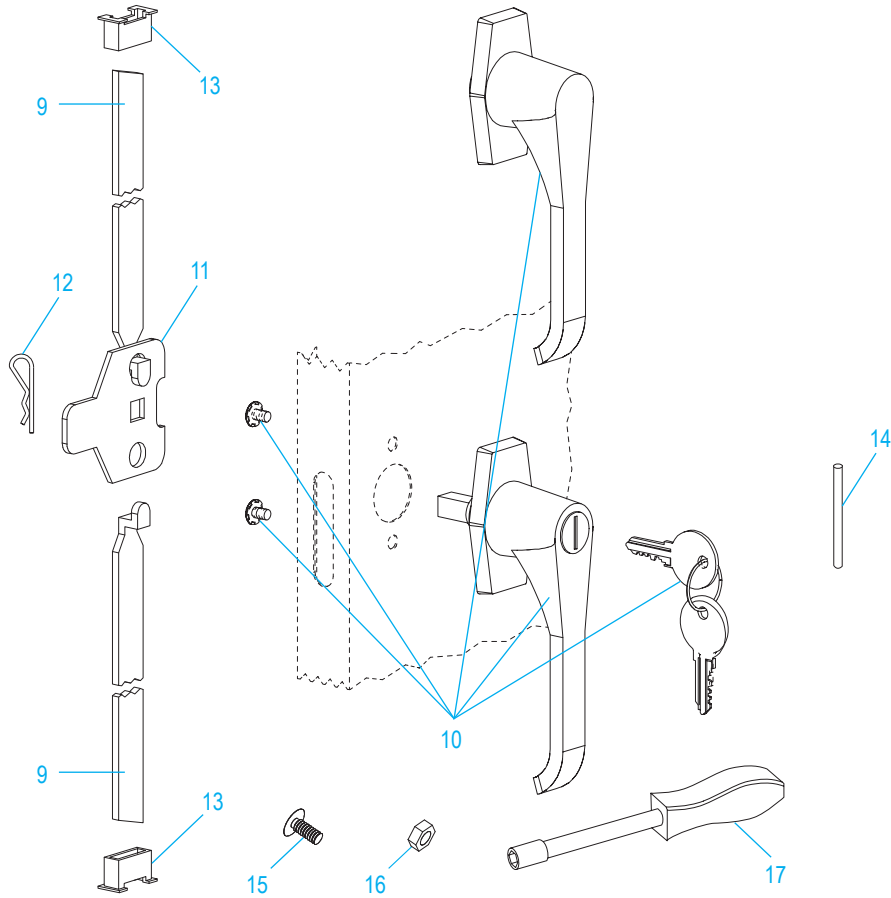
ENSAMBLE PRIMARIO



LISTA DE PARTES DEL ENSAMBLE PRIMARIO

| # | DESCRIPCIÓN | CANT. | NO. DE PARTE DE ULINE | NO. DE PARTE DEL FABRICANTE |
|---|----------------------------------|-------|-----------------------|-----------------------------|
| 1 | Panel Posterior – Negra | 2 | ----- | 055BA-BLACK |
| 1 | Panel Posterior – Gris | 2 | ----- | 055BA-GRAY |
| 1 | Panel Posterior – Canela | 2 | ----- | 055BA-PUTTY |
| 2 | Panel Lateral Izquierdo – Negra | 1 | ----- | 056LS-BLACK |
| 2 | Panel Lateral Izquierdo – Gris | 1 | ----- | 056LS-GRAY |
| 2 | Panel Lateral Izquierdo – Canela | 1 | ----- | 056LS-PUTTY |
| 3 | Panel Lateral Derecho – Negra | 1 | ----- | 056RS-BLACK |
| 3 | Panel Lateral Derecho – Gris | 1 | ----- | 056RS-GRAY |
| 3 | Panel Lateral Derecho – Canela | 1 | ----- | 056RS-PUTTY |
| 4 | Repisa – Negra | 5 | H-1871ADD-BL | 307-BLACK |
| 4 | Repisa – Gris | 5 | H-1871ADD-GR | 307-GRAY |
| 4 | Repisa – Canela | 5 | H-1871ADD-T | 307-PUTTY |
| 5 | Base Frontal – Negra | 1 | H-3616-SILL | 055SI-BLACK |
| 5 | Base Frontal – Gris | 1 | H-3594-SILL | 055SI-GRAY |
| 5 | Base Frontal – Canela | 1 | H-3616-TSILL | 055SI-PUTTY |
| 6 | Parte Superior – Negra | 1 | ----- | 056TO-BLACK |
| 6 | Parte Superior – Gris | 1 | ----- | 056TO-GRAY |
| 6 | Parte Superior – Canela | 1 | ----- | 056TO-PUTTY |
| 7 | Puerta Izquierda – Negra | 1 | ----- | CVD072JLH-BLACK |
| 7 | Puerta Izquierda – Gris | 1 | ----- | CVD072JLH-GRAY |
| 7 | Puerta Izquierda – Canela | 1 | ----- | CVD072JLH-PUTTY |
| 8 | Puerta Derecha – Negra | 1 | ----- | CVD072JRH-BLACK |
| 8 | Puerta Derecha – Gris | 1 | ----- | CVD072JRH-GRAY |
| 8 | Puerta Derecha – Canela | 1 | ----- | CVD072JRH-PUTTY |

ENSAMBLE DEL ASA

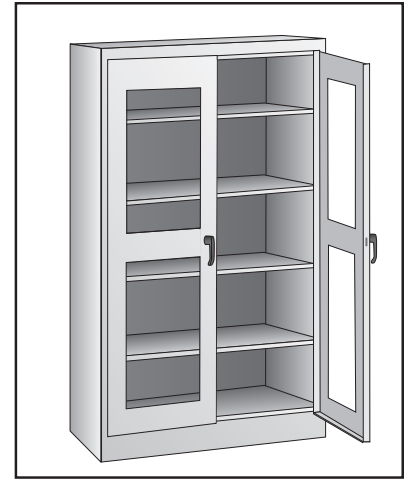


| # | DESCRIPCIÓN | CANT. | NO. DE PARTE DE ULINE | NO. DE PARTE DEL FABRICANTE |
|----|---|-------|-----------------------|-----------------------------|
| 9 | Barra de Seguridad (Juego) | 1 | H-1223-#8 | 043LB |
| 10 | Asa de Bloqueo con Llaves y Asa Inactiva (Juego) | 1 | H-2217-HANDL | ST-LKHND |
| 11 | Leva con Seguro | 1 | H-1105-13 | 944LC |
| 12 | Pasador de Chaveta | 1 | H-2216-CTRPN | CTRPN |
| 13 | Guía de la Barra de Seguridad | 2 | H-1105-15 | 944GI |
| 14 | Pasador de Bisagra | 8 | H-1106-16 | 944HP |
| 15 | Perno (#8-32 x 3/8") | 25 | ----- | ----- |
| 16 | Tuerca (#8-32) | 35 | ----- | ----- |
| 17 | Llave de Tuercas | 1 | H-1224-TOOL2 | TOOL-2 |
| | Paquete de Tornillería de Reemplazo (No Incluido) Pernos #8-32 x 3/8" (72), Tuercas #8-32 (72) | 1 | H-1224-19 | HW-72 |

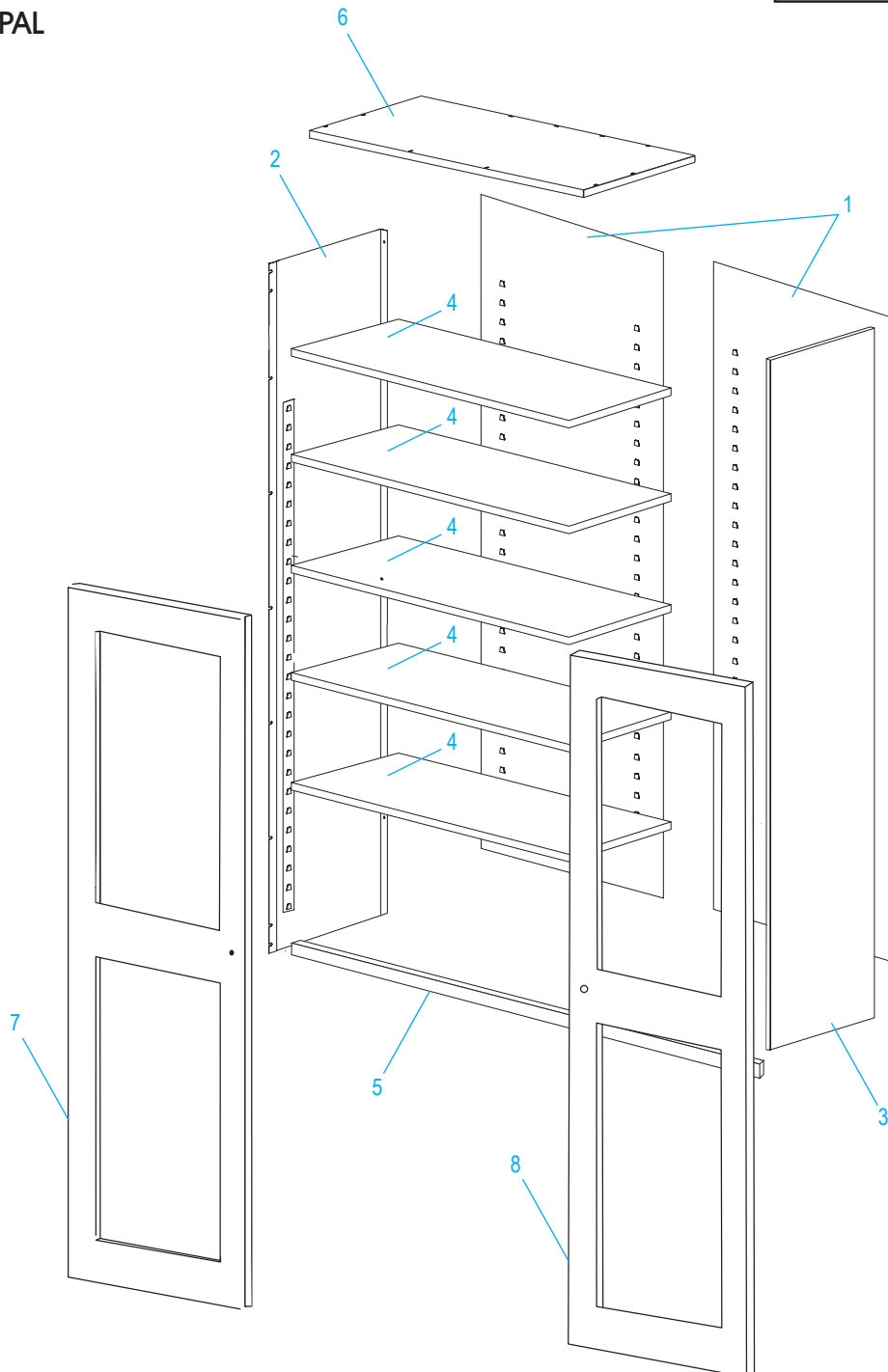
ULINE H-3594

**ARMOIRE D'ENTREPOSAGE
À PORTES TRANSPARENTES**

1-800-295-5510
uline.ca

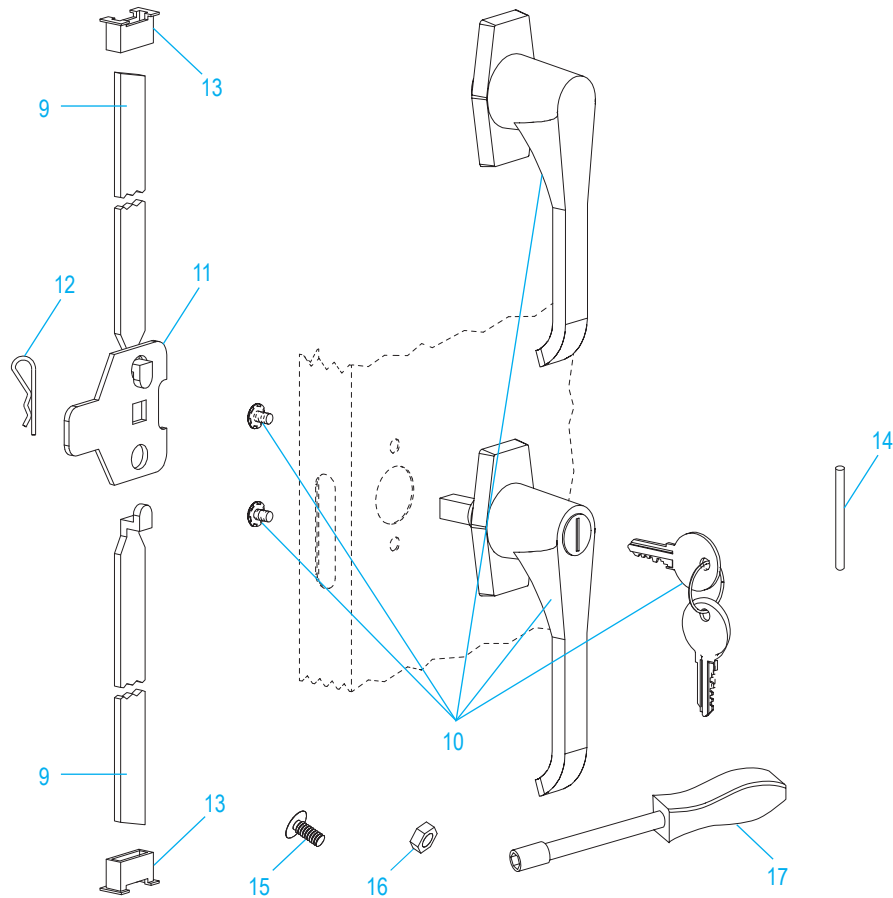


ENSEMBLE PRINCIPAL



LISTE DES PIÈCES DU ENSEMBLE PRINCIPAL

| # | DESCRIPTION | QTÉ | RÉF. ULINE | RÉF. DU FABRICANT |
|---|--------------------------------|-----|--------------|-------------------|
| 1 | Panneau arrière – noire | 2 | ----- | 055BA-BLACK |
| 1 | Panneau arrière – grise | 2 | ----- | 055BA-GRAY |
| 1 | Panneau arrière – sable | 2 | ----- | 055BA-PUTTY |
| 2 | Panneau latéral gauche – noire | 1 | ----- | 056LS-BLACK |
| 2 | Panneau latéral gauche – grise | 1 | ----- | 056LS-GRAY |
| 2 | Panneau latéral gauche – sable | 1 | ----- | 056LS-PUTTY |
| 3 | Panneau latéral droit – noire | 1 | ----- | 056RS-BLACK |
| 3 | Panneau latéral droit – grise | 1 | ----- | 056RS-GRAY |
| 3 | Panneau latéral droit – sable | 1 | ----- | 056RS-PUTTY |
| 4 | Tablette – noire | 5 | H-1871ADD-BL | 307-BLACK |
| 4 | Tablette – grise | 5 | H-1871ADD-GR | 307-GRAY |
| 4 | Tablette – sable | 5 | H-1871ADD-T | 307-PUTTY |
| 5 | Seuil de cadre – noire | 1 | H-3616-SILL | 055SI-BLACK |
| 5 | Seuil de cadre – grise | 1 | H-3594-SILL | 055SI-GRAY |
| 5 | Seuil de cadre – sable | 1 | H-3616-TSILL | 055SI-PUTTY |
| 6 | Dessus de l'armoire – noire | 1 | ----- | 056TO-BLACK |
| 6 | Dessus de l'armoire – grise | 1 | ----- | 056TO-GRAY |
| 6 | Dessus de l'armoire – sable | 1 | ----- | 056TO-PUTTY |
| 7 | Porte de gauche – noire | 1 | ----- | CVD072JLH-BLACK |
| 7 | Porte de gauche – grise | 1 | ----- | CVD072JLH-GRAY |
| 7 | Porte de gauche – sable | 1 | ----- | CVD072JLH-PUTTY |
| 8 | Porte de droite – noire | 1 | ----- | CVD072JRH-BLACK |
| 8 | Porte de droite – grise | 1 | ----- | CVD072JRH-GRAY |
| 8 | Porte de droite – sable | 1 | ----- | CVD072JRH-PUTTY |

**ARMOIRE D'ENTREPOSAGE
À PORTES TRANSPARENTES****ENSEMBLE DE LA POIGNÉE**

| # | DESCRIPTION | QTÉ | RÉF. ULINE | RÉF. DU FABRICANT |
|----|--|-----|--------------|-------------------|
| 9 | Barre de verrouillage (ensemble) | 1 | H-1223-#8 | 043LB |
| 10 | Poignée de verrouillage avec clés et poignée complémentaire (ensemble) | 1 | H-2217-HANDL | ST-LKHND |
| 11 | Came de verrouillage | 1 | H-1105-13 | 944LC |
| 12 | Goupille fendue | 1 | H-2216-CTRPN | CTRPN |
| 13 | Guide de barre de verrouillage | 2 | H-1105-15 | 944GI |
| 14 | Axe de charnière | 8 | H-1106-16 | 944HP |
| 15 | Boulon (n° 8-32 x 3/8 po) | 25 | ----- | ----- |
| 16 | Écrou (n° 8-32) | 35 | ----- | ----- |
| 17 | Tournevis à douille | 1 | H-1224-TOOL2 | TOOL-2 |
| | Trousse de matériel de rechange (non comprise) Boulons n° 8-32 x 3/8 po (72), écrous n° 8-32 (72) | 1 | H-1224-19 | HW-72 |