

ASSEMBLY

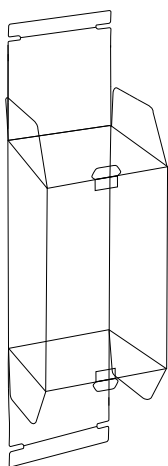


Figure 1

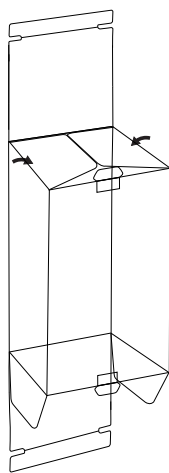


Figure 2

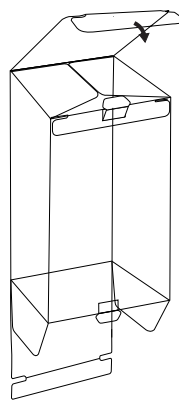


Figure 3

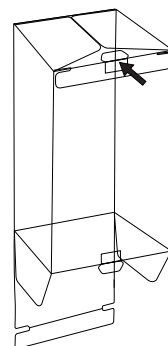


Figure 4

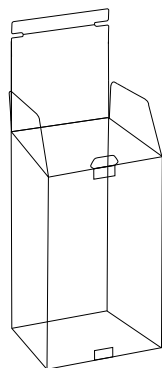


Figure 5

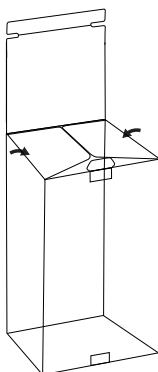


Figure 6

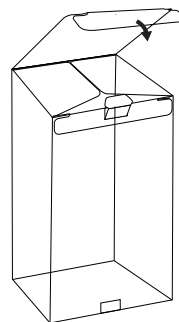


Figure 7

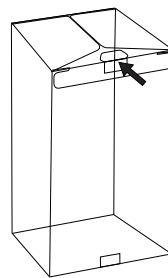


Figure 8

1. Open and crease edges to create box.

TO CLOSE BOTTOM

1. Crease edges. (See Figure 1)
2. Fold down side flaps. (See Figure 2)
3. Tuck bottom closed. (See Figure 3)
4. Insert tab to secure closure. (See Figure 4)

TO CLOSE TOP

1. Flip box over and crease edges. (See Figure 5)
2. Fold down side flaps. (See Figure 6)
3. Tuck top closed. (See Figure 7)
4. Insert tab to secure closure. (See Figure 8)