

## ASSEMBLY

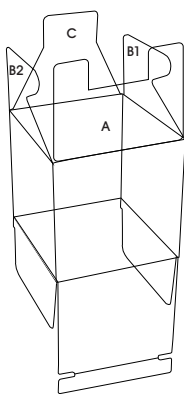


Figure 1

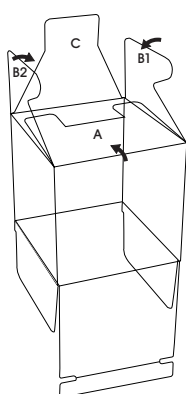


Figure 2

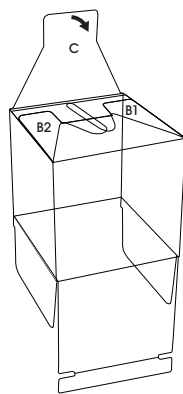


Figure 3

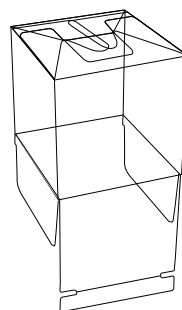


Figure 4

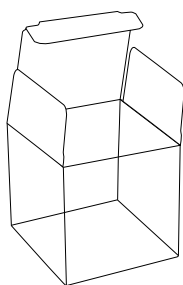


Figure 5

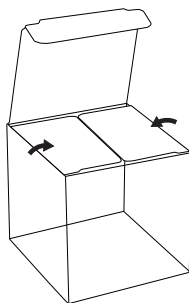


Figure 6

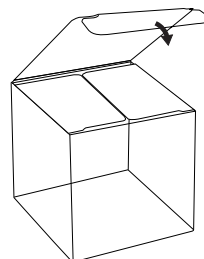


Figure 7

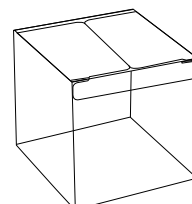


Figure 8

1. Open and crease edges to create box.  
(See Figure 1)

### TO CLOSE BOTTOM

1. Fold down flap A. (See Figure 2)
2. Fold down flaps B1 and B2, tucking in tabs under opening on flap A. (See Figures 2-3)
3. Fold down flap C over flaps B1 and B2, tucking into center opening of flap A. (See Figures 3-4)

### TO CLOSE TOP

1. Flip box over and crease edges.  
(See Figure 5)
2. Fold down side flaps. (See Figure 6)
3. Tuck top closed. (See Figures 7-8 )