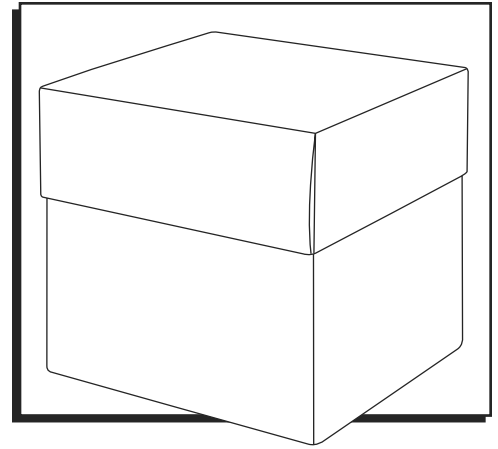


ULINE

S-22267, S-22268
S-22269, S-22270
S-22271, S-22272

HIGH GLOSS GIFT BOXES

1-800-295-5510
uline.com



ASSEMBLY

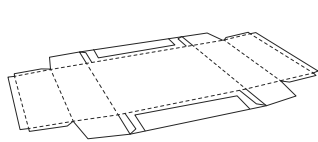


Figure 1

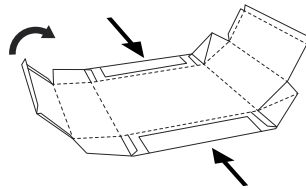


Figure 2

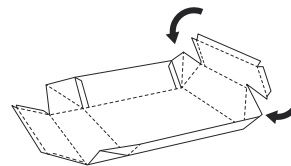


Figure 3

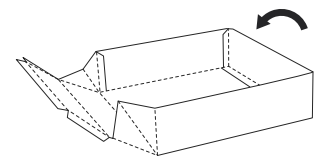


Figure 4

LID ASSEMBLY



NOTE: Before assembling, crease along all folds to ensure proper fit.

1. Lay lid flat with glossy side facing down. (See Figure 1)
2. Fold sides up and inward. (See Figure 2)
3. Crease the corners inward one side at a time. (See Figure 3)
4. Fold the corners completely in and tuck snugly against the end panel. (See Figure 3)
5. Fold the flap up and over so it is flat against the end. (See Figure 4)
6. Repeat on the other side of the lid. (See Figure 5)

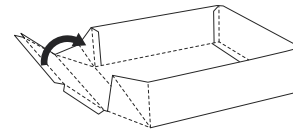


Figure 5

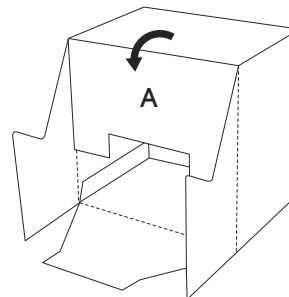


Figure 6

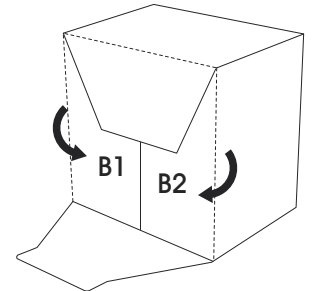


Figure 7

BASE ASSEMBLY

1. Open flat box and crease flattened edges to create box. Fold down flap A. (See Figure 6)
2. Fold down flaps B1 and B2 and tuck into flap A. (See Figure 7)
3. Fold flap C and tuck into flap A. (See Figure 8)
4. Place lid on base. (See Figure 9)

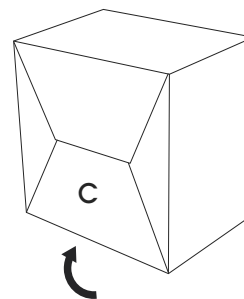


Figure 8

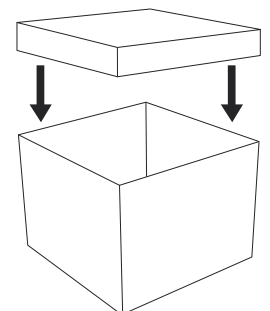


Figure 9

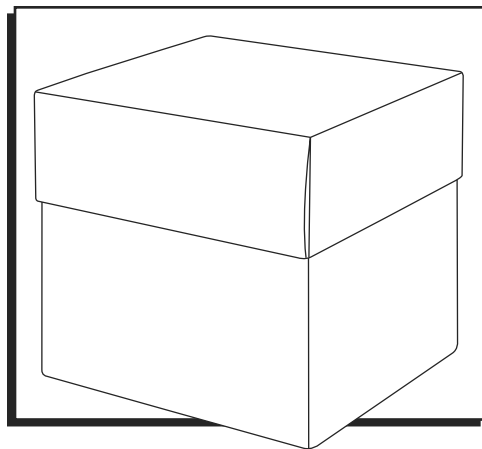
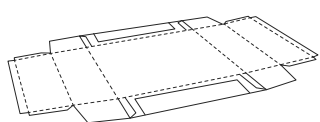
**CAJAS DE ALTO BRILLO
PARA REGALO****ENSAMBLE**

Diagrama 1

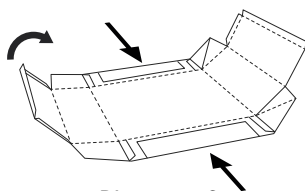


Diagrama 2

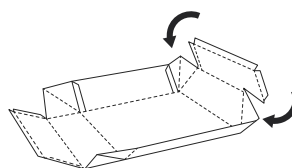


Diagrama 3

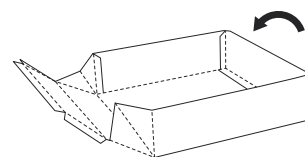


Diagrama 4

ENSAMBLE DE LA TAPA

NOTA: Antes de ensamblar, pliegue todos los dobleces para asegurar un ajuste adecuado.

1. Coloque la tapa plana con el lado brillante hacia abajo. (Vea Diagrama 1)
2. Doble los laterales hacia arriba y adentro. (Vea Diagrama 2)
3. Pliegue las esquinas hacia adentro, un lado a la vez. (Vea Diagrama 3)
4. Doble las esquinas hacia adentro por completo e inserte holgadamente en contra del panel del extremo. (Vea Diagrama 3)
5. Doble la solapa hacia arriba y por encima de manera que quede plana en contra del panel del extremo. (Vea Diagrama 4)
6. Repita en el otro lado de la tapa. (Vea Diagrama 5)

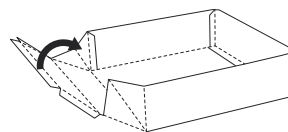


Diagrama 5

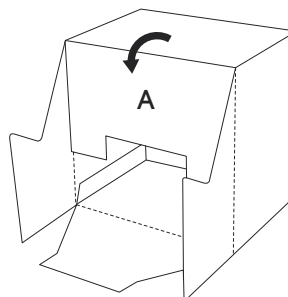


Diagrama 6

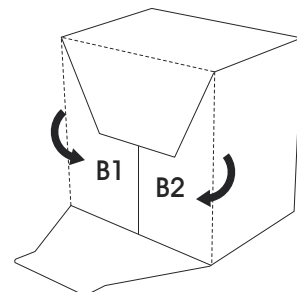


Diagrama 7

ENSAMBLE DE LA BASE

1. Abra la caja plana y pliegue los bordes lisos para crear la caja. Doble la solapa A. (Vea Diagrama 6)
2. Doble las solapas B1 y B2 e inserte en la solapa A. (Vea Diagrama 7)
3. Doble la solapa C e inserte en la solapa A. (Vea Diagrama 8)
4. Coloque la tapa en la base. (Vea Diagrama 9)

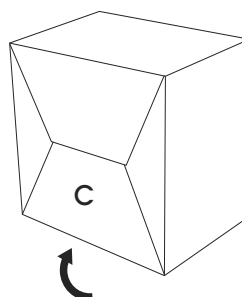


Diagrama 8

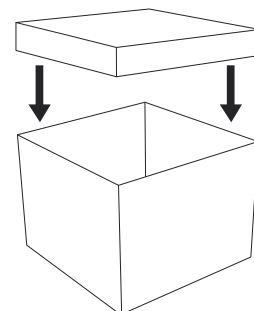


Diagrama 9

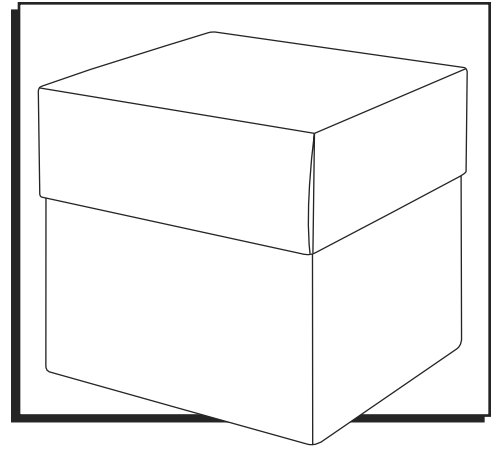
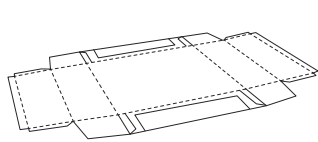
**MONTAGE**

Figure 1

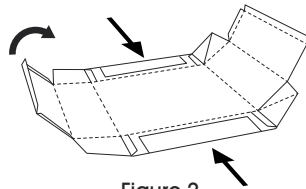


Figure 2

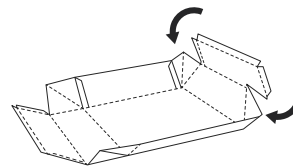


Figure 3

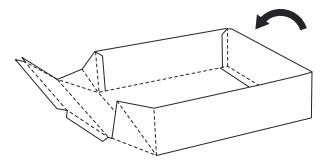


Figure 4

MONTAGE DU COUVERCLE

REMARQUE : Avant le montage, pliez le long de toutes les rainures pour assurer un bon ajustement.

1. Posez le couvercle à plat, côté brillant orienté vers le bas. (Voir Figure 1)
2. Pliez les côtés vers le haut et vers l'intérieur. (Voir Figure 2)
3. Pliez les coins un par un vers l'intérieur. (Voir Figure 3)
4. Pliez complètement les coins vers l'intérieur et insérez-les fermement contre le panneau d'extrémité. (Voir Figure 3)
5. Pliez le rabat vers le haut et repliez vers l'intérieur de manière à ce qu'il repose à plat sur le panneau d'extrémité. (Voir Figure 4)
6. Répétez l'opération de l'autre côté de la boîte. (Voir Figure 5)

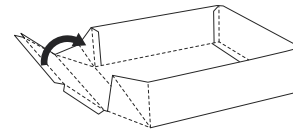


Figure 5

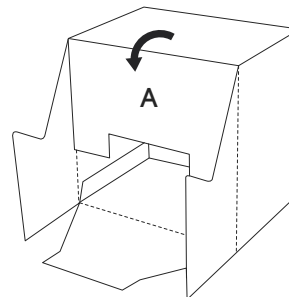


Figure 6

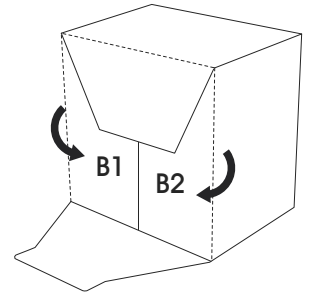


Figure 7

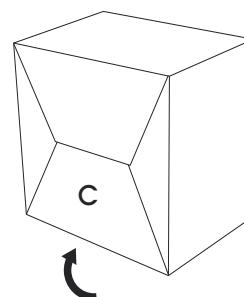


Figure 8

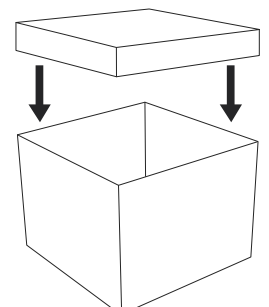


Figure 9

MONTAGE DE LA BASE

1. Ouvrez la boîte plate et pliez les rebords aplatis pour former la boîte. Pliez le rabat A vers le bas. (Voir Figure 6)
2. Pliez les rabats B1 et B2 vers le bas et insérez-les dans le rabat A.
3. Pliez le rabat C et insérez-le dans le rabat A.
4. Placez le couvercle sur la base. (Voir Figure 9)