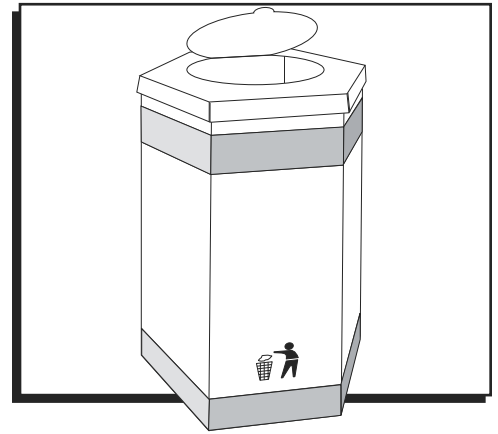


**ULINE** S-18542

# 32" KRAFT HEXAGONAL TRASH RECEPTACLE

1-800-295-5510  
uline.com



## BASE ASSEMBLY

Figure 1

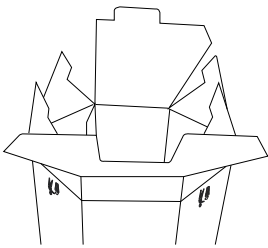


Figure 2

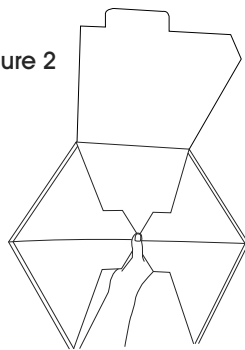


Figure 3

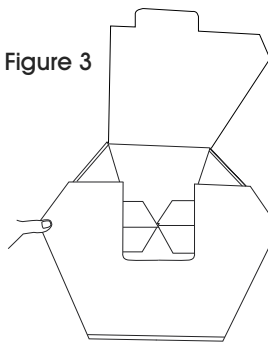


Figure 4

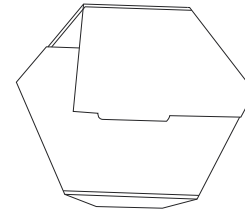
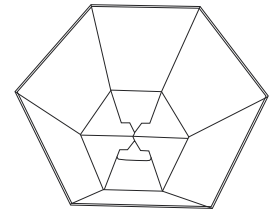


Figure 5



1. Bend all of the sides and flip upside down so that it can stand on its own. (See Figure 1)
2. Fold the four like flaps down. (See Figure 2)
3. Fold the u-shaped flap down over the other 4. (See Figure 3)
4. Fold down the opposite flap and tuck in the tab. It should now look assembled (See Figure 4)
5. Flip so that it is now right side up. (See Figure 5)

## LID ASSEMBLY

Figure 6

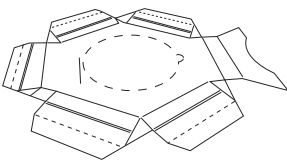


Figure 7

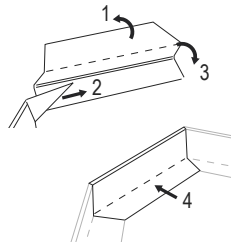


Figure 8

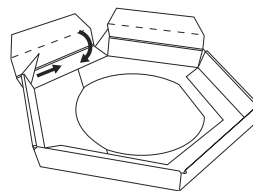


Figure 9

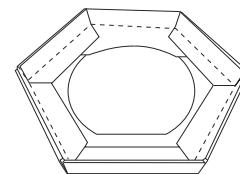
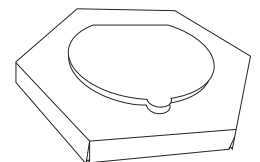



Figure 10

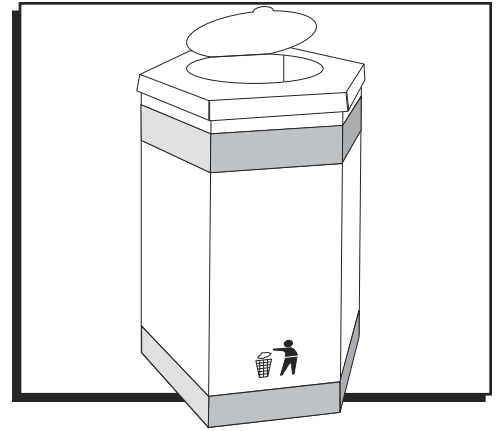


1. Place lid on flat surface as shown. (See Figure 6)
  2. Fold flaps up over pointed tabs so that the double crease of each flap will form the edge. The perforated line will form the inside wall. (See Figures 7-8)
  3. Continue to fold the flaps and tuck in the tabs until lid is assembled. (See Figure 9)
  4. Flip over so that it is now right side up. Carefully open lid at perforation. (See Figure 10)
-  **NOTE: Make sure the curved flap is folded down first so that adjacent tabs fold over it.**

**ULINE S-18542**

**BOTE HEXAGONAL KRAFT  
DE 81.3 CM (32") PARA  
BASURA**

800-295-5510  
uline.mx



**ENSAMBLE DE LA BASE**

Diagrama 1

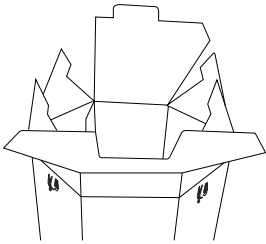


Diagrama 2

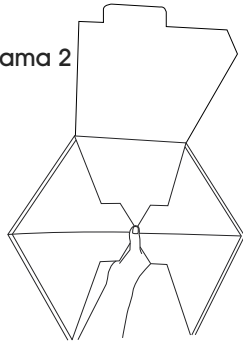


Diagrama 3

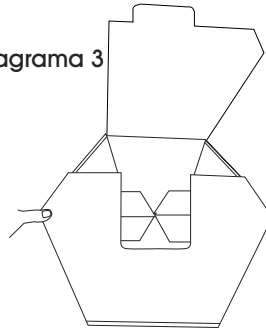


Diagrama 4

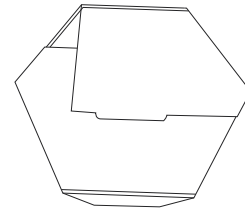
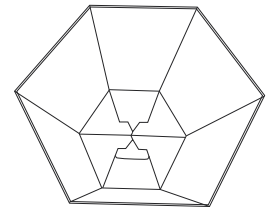


Diagrama 5



1. Doble todos los lados y voltee la unidad de forma que se quede de pie por sí misma. (Vea Diagrama 1)
2. Doble las cuatro solapas iguales hacia abajo. (Vea Diagrama 2)
3. Doble la solapa en forma de U hacia abajo sobre las otras 4. (Vea Diagrama 3)
4. Doble la solapa contraria y métala por dentro de la pestaña. Debe quedar ensamblada por completo. (Vea Diagrama 4)
5. Voltéelo de forma que quede hacia arriba. (Vea Diagrama 5)

**ENSAMBLE DE LA TAPA**

Diagrama 6

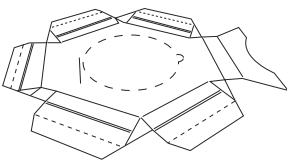


Diagrama 7

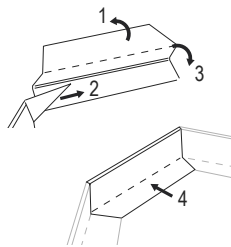


Diagrama 8

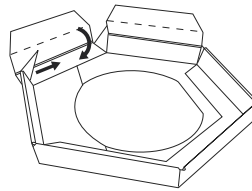


Diagrama 9

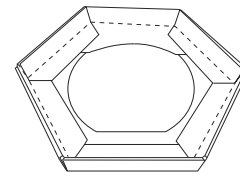
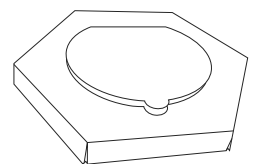



Diagrama 10

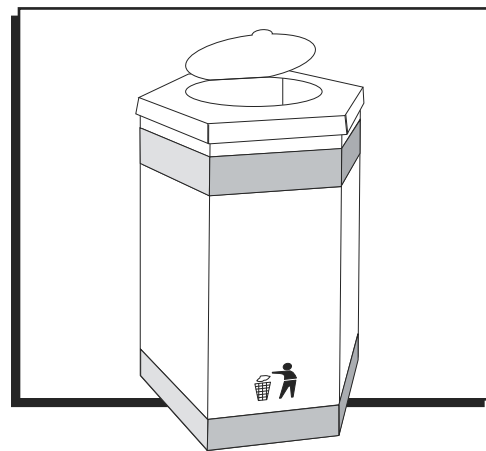


1. Coloque la tapa sobre una superficie plana como se muestra. (Vea Diagrama 6)
  2. Doble hacia arriba las solapas sobre las pestañas con puntas, de manera que los pliegues dobles de cada solapa formen un borde. La línea perforada formará la pared interior. (Vea Diagramas 7-8)
  3. Continúe doblando las solapas y meta las pestañas hacia adentro hasta que la tapa quede ensamblada. (Vea Diagrama 9)
  4. Voltee la unidad para que el lado adecuado quede hacia arriba. Abra cuidadosamente la tapa por la perforación. (Vea Diagrama 10)
-  **NOTA:** Asegúrese de doblar primero la solapa curva hacia abajo, de manera que la solapa adyacente se doble sobre ella.

**ULINE** S-18542

**POUBELLE HEXAGONALE  
EN CARTON KRAFT DE  
81,3 CM (32 PO)**

1-800-295-5510  
uline.com



**ASSEMBLAGE DE LA BASE**

Figure 1

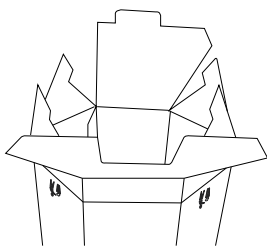


Figure 2

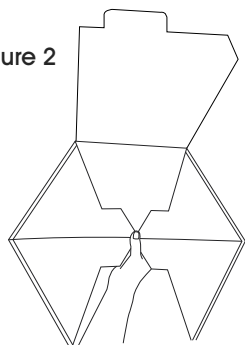


Figure 3

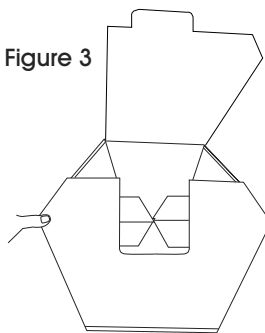


Figure 4

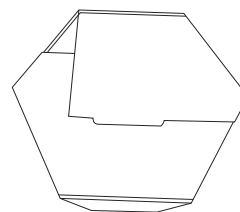
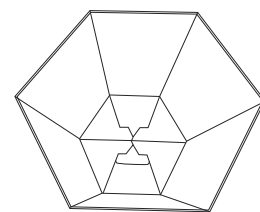


Figure 5



1. Pliez tous les côtés et inversez la boîte afin qu'elle se tienne à la verticale par elle-même. (Voir Figure 1)
2. Pliez les quatre rabats identiques vers l'intérieur. (Voir Figure 2)
3. Pliez le rabat en U par-dessus les quatre autres. (Voir Figure 3)
4. Pliez le rabat opposé et insérez la languette. Elle devrait maintenant être assemblée (Voir Figure 4)
5. Retournez-la à l'endroit. (Voir Figure 5)

**ASSEMBLAGE DU COUVERCLE**

Figure 6

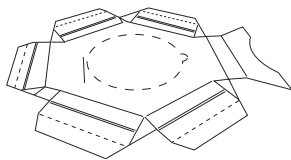


Figure 7

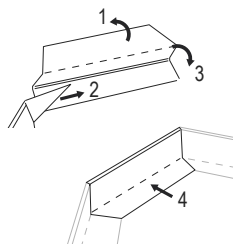


Figure 8

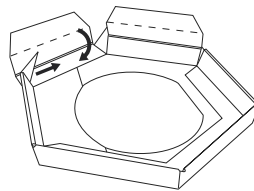


Figure 9

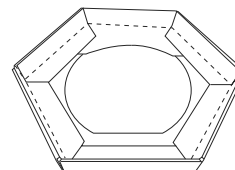
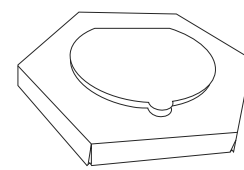


Figure 10



1. Placez le couvercle sur une surface plane, comme illustré. (Voir Figure 6)
2. Pliez les rabats vers l'extérieur par-dessus les languettes pointues afin que la double pliure de chaque rabat forme le bord. La ligne perforée formera la paroi intérieure. (Voir Figures 7 et 8)
3. Continuez à plier les rabats et à rentrer les languettes jusqu'à ce que le couvercle soit assemblé. (Voir Figure 9)
4. Retournez-le à l'endroit. Ouvrez délicatement le couvercle à la ligne perforée. (Voir Figure 10)



**REMARQUE :** Assurez-vous que le rabat courbé est plié en premier afin que les languettes adjacentes se replient sur celui-ci.