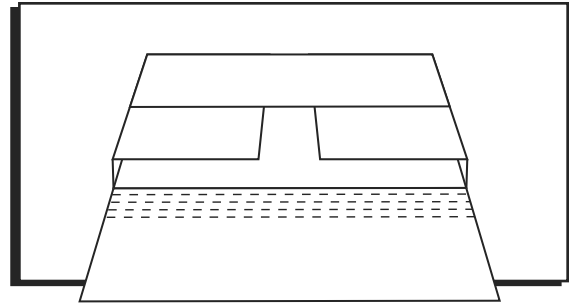


ULINE

EASY-FOLD MAILER

1-800-295-5510
uline.com



ASSEMBLY

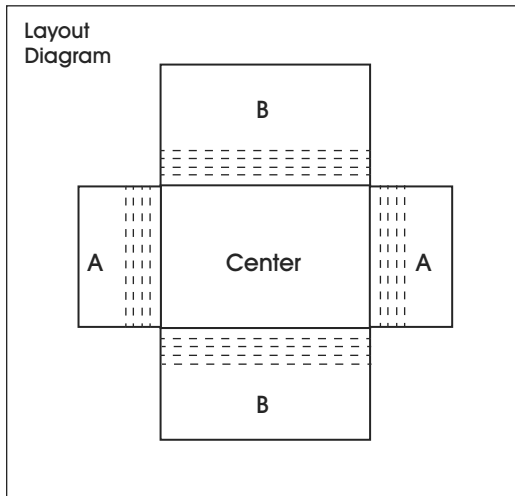


Figure 1

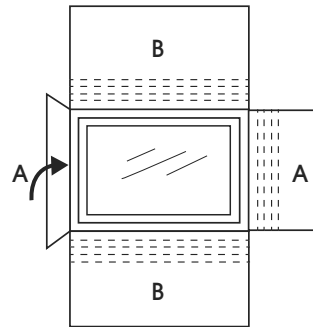


Figure 2

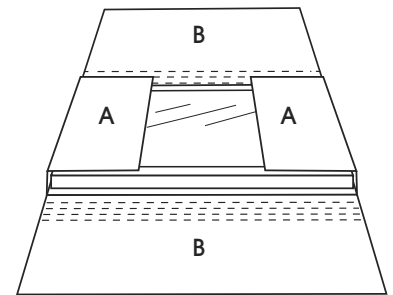


Figure 3

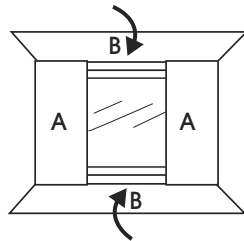


Figure 4

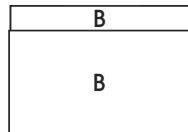
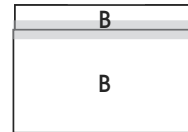


Figure 5



1. Place product in center of mailer. (See Figure 1)
2. Fold A panels over product with height of scores based on the product's depth. (See Figures 1-2)
3. Fold B panels on top of A panels. (See Figures 3-4)
4. Seal B panels closed with tape. (See Figure 5)



NOTE: Depending on depth of the product, B panels will overlap or meet in the center of mailer.