

ULINE**LITERATURE MAILER**

1-800-295-5510

uline.com

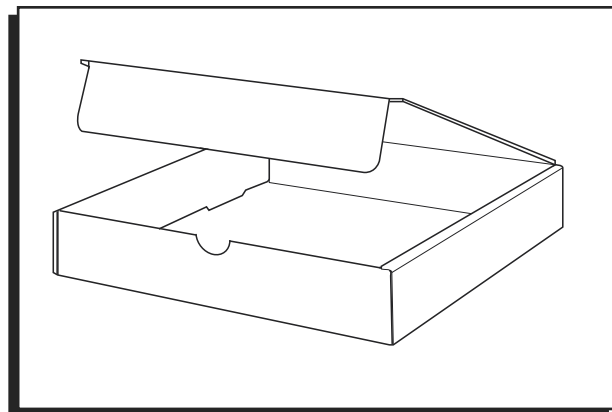
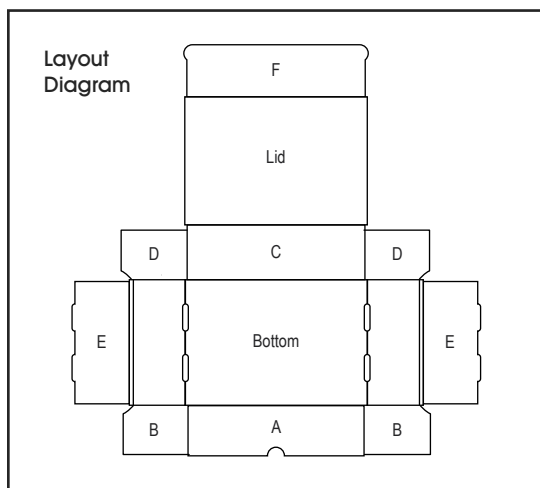
**ASSEMBLY**

Figure 1

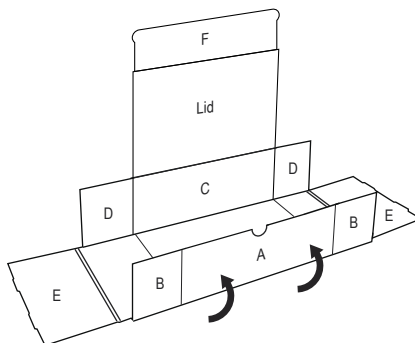


Figure 2

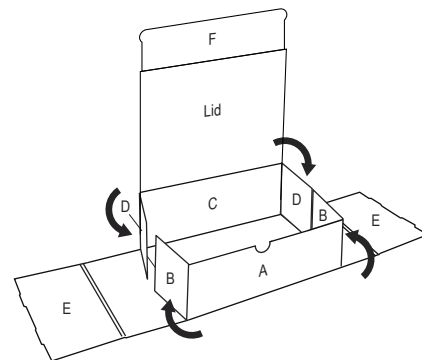


Figure 3

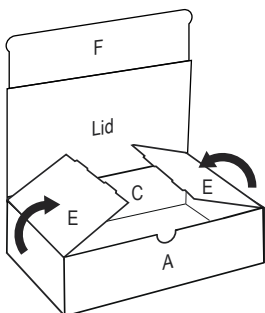


Figure 4

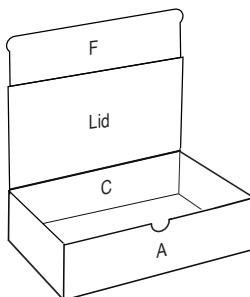
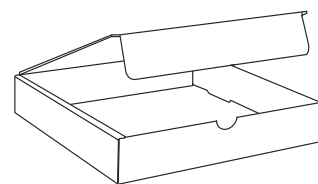


Figure 5



1. Fold panels A and C straight up so they are perpendicular to the bottom. (See Figure 1)
2. Fold in flaps B and D. (See Figure 2)
3. To form sides of box, fold ends E up and over flaps B and D, tucking into slots at the bottom. (See Figures 3 and 4)
4. Fold down lid and tuck panel F into mailer to close. (See Figure 5)

ULINE

CHICAGO • ATLANTA • DALLAS • LOS ANGELES • MINNEAPOLIS • NYC/PHILA • SEATTLE • MEXICO • CANADA

0716 IS-156