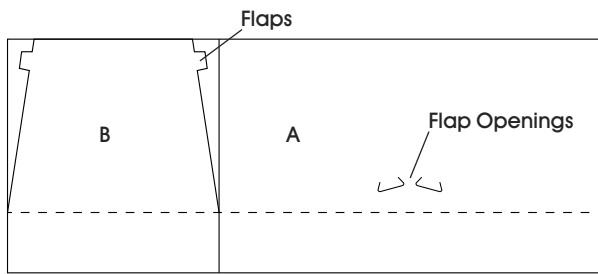


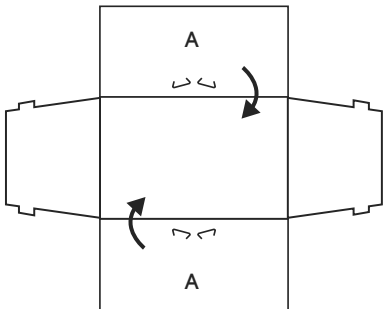
ASSEMBLY

Layout Diagram



1. Fold A panels of base inward so white side faces up. (See Figure 1)

Figure 1



2. Fold B panels of base inward and insert flaps into flap openings on A panels. (See Figures 2 and 3)

Figure 2

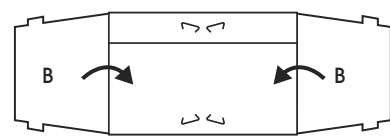
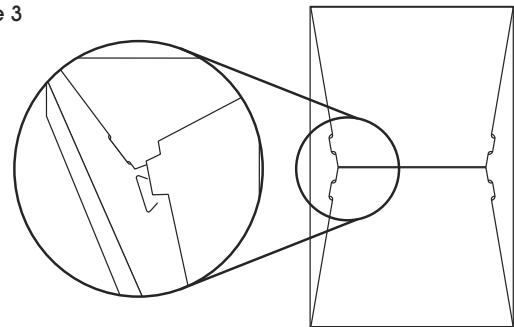


Figure 3



3. Flip box over. Add lid to assembled base. (See Figure 4)

Figure 4

