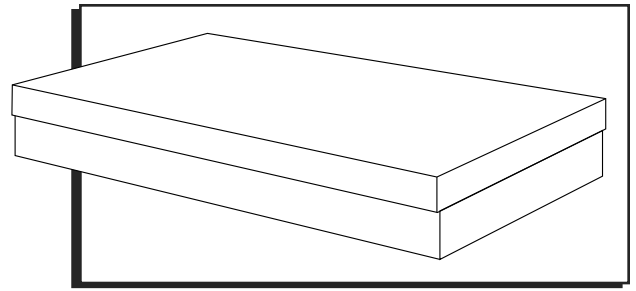


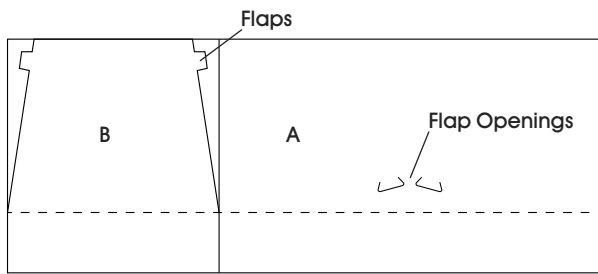
# ULINE DELUXE GIFT BOX

1-800-295-5510  
uline.com



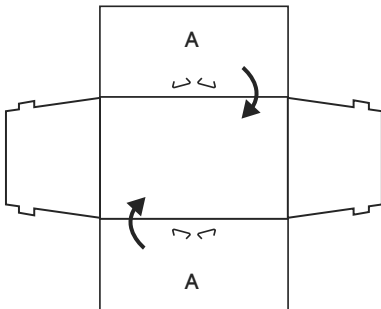
## ASSEMBLY

Layout Diagram



1. Fold A panels of base inward so white side faces up. (See Figure 1)

Figure 1



2. Fold B panels of base inward and insert flaps into flap openings on A panels. (See Figures 2 and 3)

Figure 2

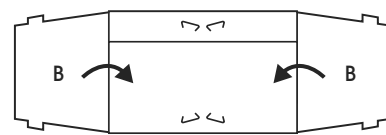
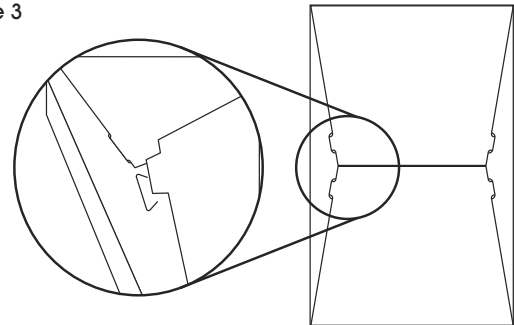
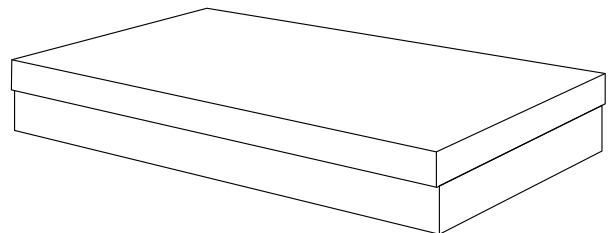


Figure 3



3. Flip box over. Add lid to assembled base. (See Figure 4)

Figure 4



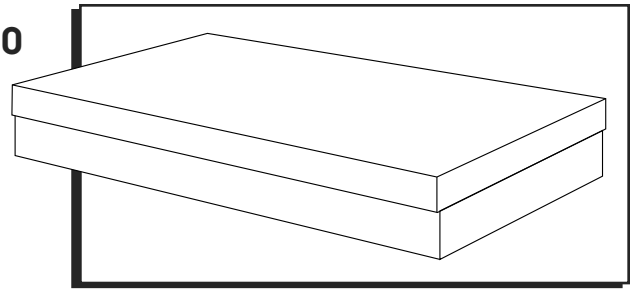
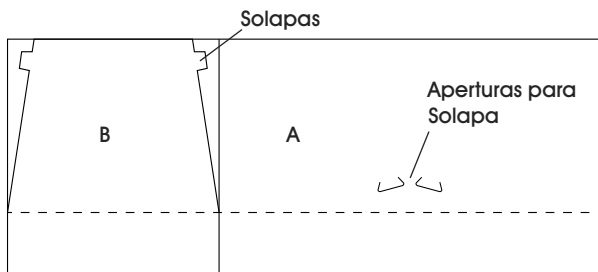
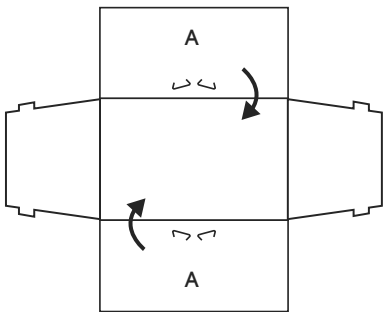
**ENSAMBLE**

Diagrama de Diseño



1. Doble los paneles A de la base hacia adentro de modo que el lado blanco quede hacia arriba. (Vea Diagrama 1)

Diagrama 1



2. Doble los paneles B de la base hacia adentro e inserte las solapas en las aberturas para solapa de los paneles A. (Vea Diagramas 2 y 3)

Diagrama 2

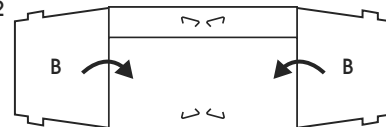
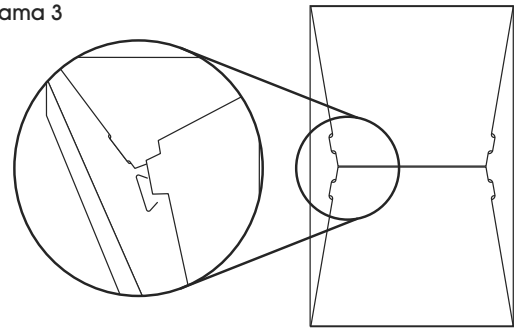
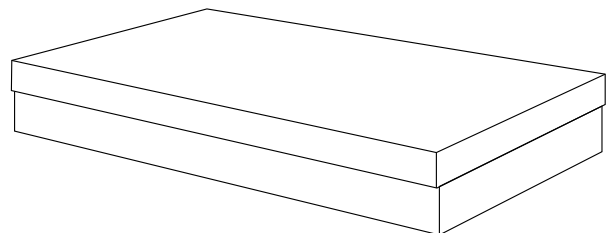


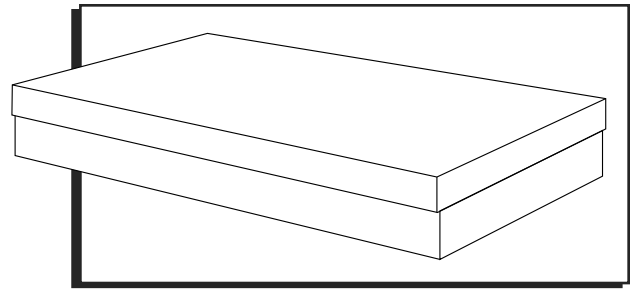
Diagrama 3



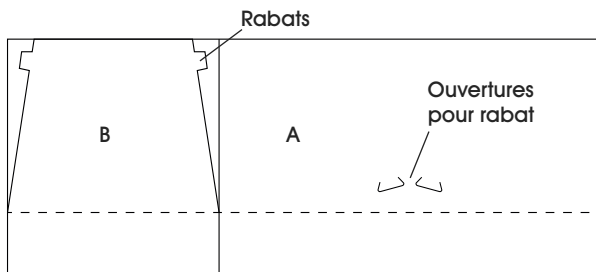
3. Voltee la caja. Coloque la tapa sobre la base ensamblada. (Vea Diagrama 4)

Diagrama 4



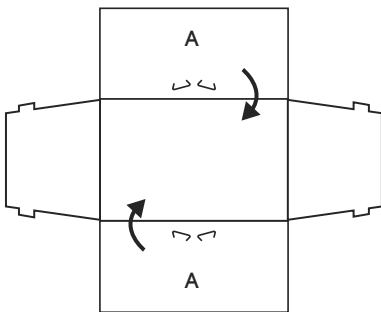
**ASSEMBLAGE**

Schéma



1. Pliez les parois A de la base vers l'intérieur de sorte que le côté blanc soit orienté vers le haut. (Voir Figure 1)

Figure 1



2. Pliez les parois B de la base vers l'intérieur et insérez les rabats dans les ouvertures pour rabat des parois A. (Voir Figures 2 et 3)

Figure 2

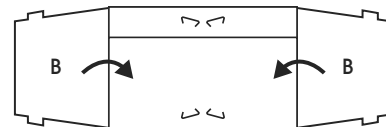
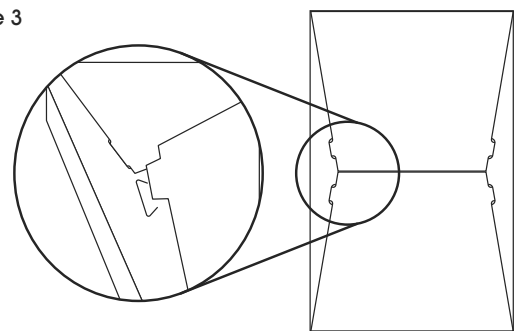


Figure 3



3. Retournez la boîte. Placez le couvercle sur la base assemblée. (Voir Figure 4)

Figure 4

