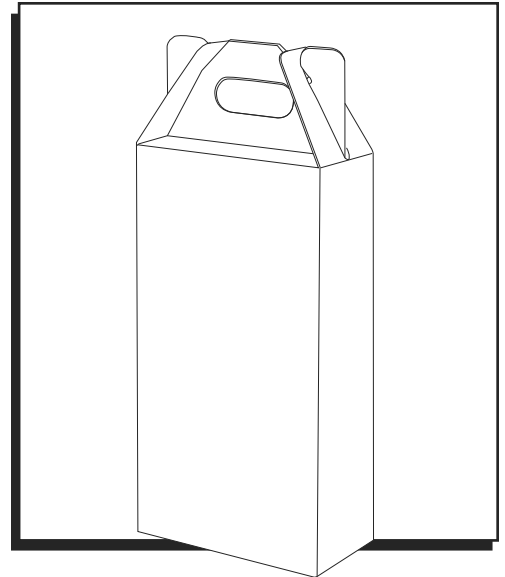


ULINE S-12680

**2 BOTTLE
WINE TOTE**

1-800-295-5510
uline.com



ASSEMBLY

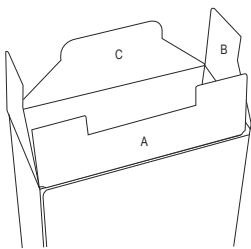


Figure 1

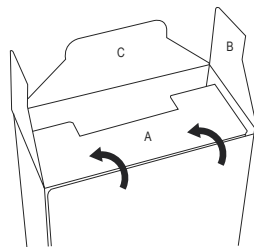


Figure 2

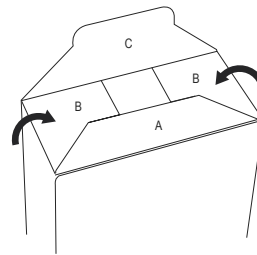


Figure 3

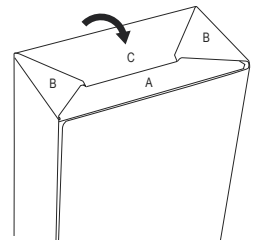


Figure 4

1. Push sides in toward the middle to open tote. Flip upside down to assemble the bottom. (See Figure 1)
2. Bend flap (A) and then flaps (B) at creases. (See Figures 2 and 3)
3. Bend flap (C) at crease and fold inside the middle slot created from step 2. (See Figure 4)
4. Flip the tote over. Bend the inside flap at the crease to form two compartments. (See Figures 5 and 6)
5. To close the top, bring hand holes together, and push down. Slide the slotted side tabs over the top until they lock into place.

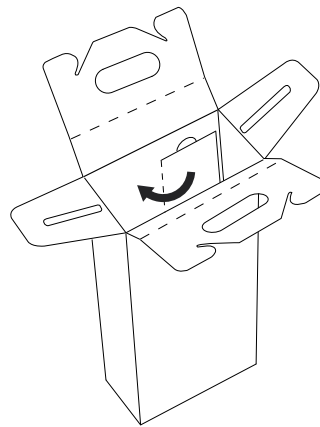


Figure 5

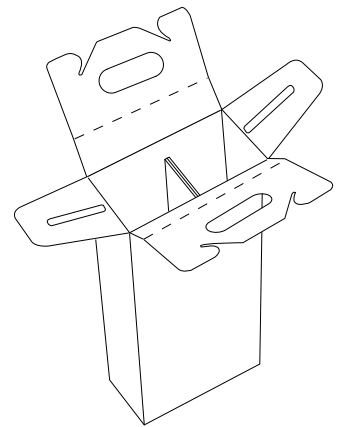
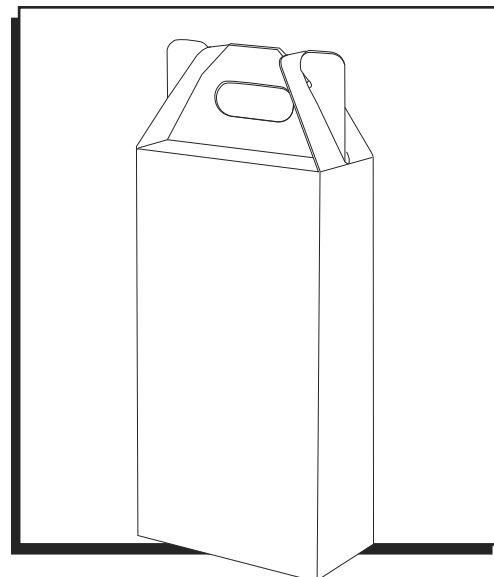


Figure 6

ULINE S-12680

**CAJAS CON ASA
PARA VINOS – 2 BOTELLAS**

800-295-5510
uline.mx



ENSAMBLE

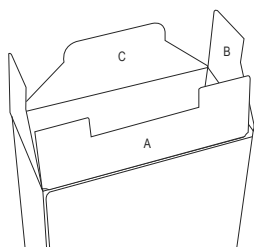


Diagrama 1

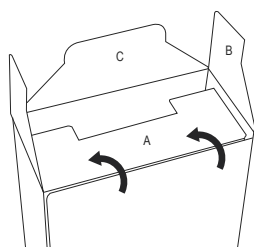


Diagrama 2

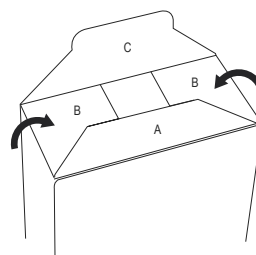


Diagrama 3

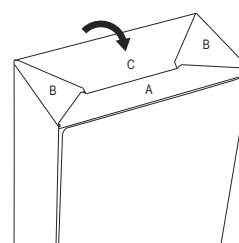


Diagrama 4

1. Empuje los laterales hacia dentro y hacia el centro para abrir la caja con asa. Voltee la caja para ensamblar la parte inferior. (Vea Diagrama 1)
2. Doble la solapa (A) y luego las solapas (B) por los pliegues. (Vea Diagramas 2 y 3)
3. Doble la solapa (C) por los pliegues hacia adentro de la ranura central creada en el paso 2. (Vea Diagrama 4)
4. Voltee de nuevo la caja con asa. Doble la solapa interior por el pliegue para formar dos compartimentos. (Vea Diagramas 5 y 6)
5. Para cerrar la parte superior, junte las asas y empuje hacia abajo. Deslice las pestañas laterales ranuradas por encima de la parte superior hasta que se traben en su lugar.

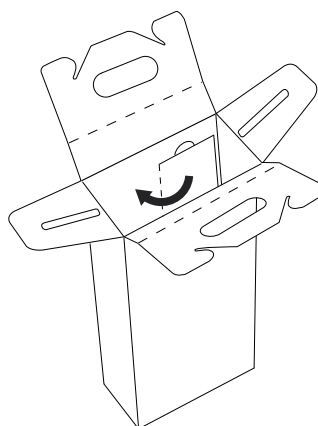


Diagrama 5

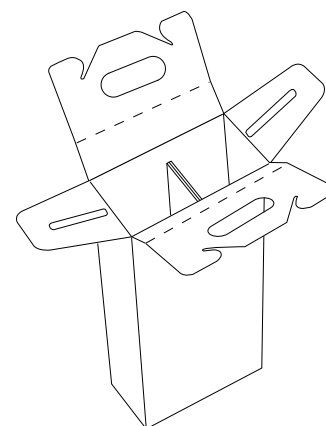


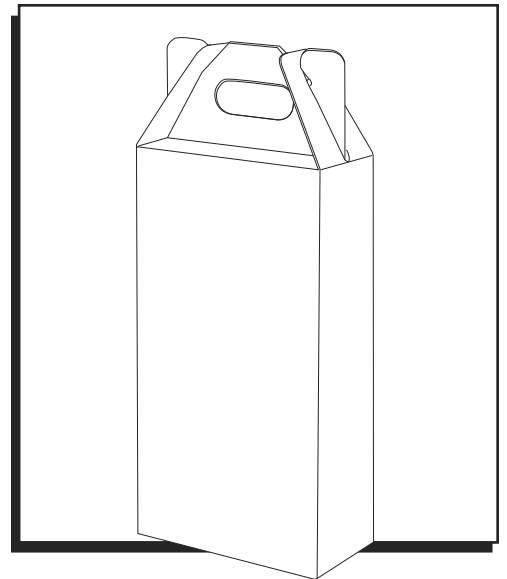
Diagrama 6

ULINE S-12680

**BOÎTE DE TRANSPORT POUR
LE VIN – 2 BOUTEILLES**

1-800-295-5510

uline.ca



MONTAGE

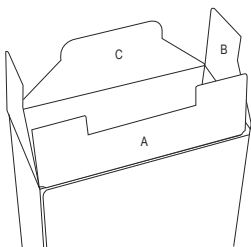


Figure 1

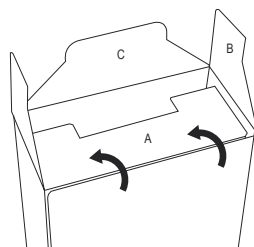


Figure 2

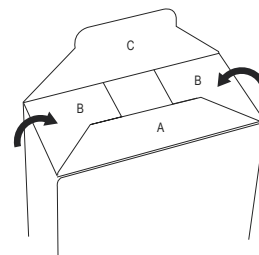


Figure 3

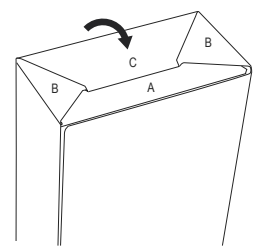


Figure 4

1. Poussez les côtés à l'intérieur vers le centre pour ouvrir la boîte. Inversez la boîte pour assembler le dessous. (Voir Figure 1)
2. Pliez le rabat (A), puis pliez les rabats (B) à la pliure. (Voir Figures 2 et 3)
3. Pliez le rabat (C) à la pliure et insérez-le dans la fente du milieu formée à l'étape 2. (Voir Figure 4)
4. Retournez la boîte à l'endroit. Pliez le rabat intérieur à la pliure pour former deux compartiments. (Voir Figures 5 et 6)
5. Pour fermer le dessus, ramenez les orifices des poignées ensemble et poussez-les vers le bas. Faites glisser les languettes à fente latérales sur le dessus de la boîte jusqu'à ce qu'elles soient bien entrées en place.

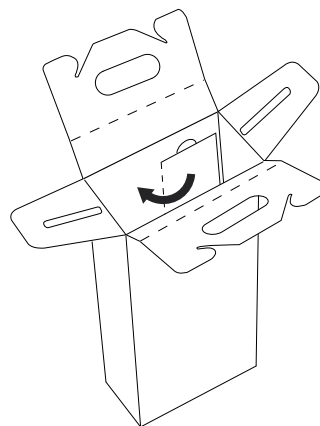


Figure 5

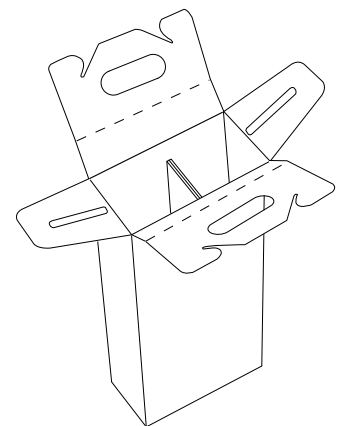


Figure 6