

## ASSEMBLY

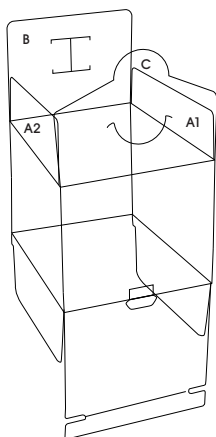


Figure 1

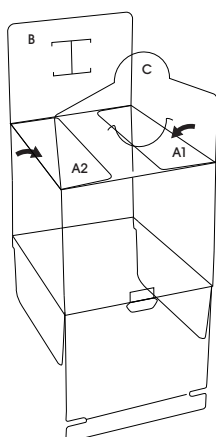


Figure 2

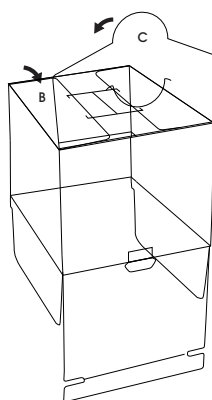


Figure 3

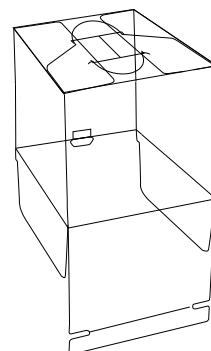


Figure 4

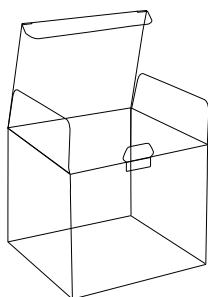


Figure 5

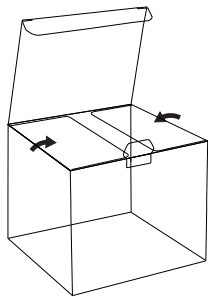


Figure 6

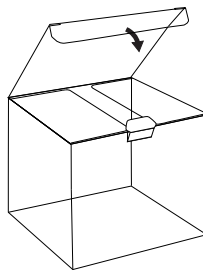


Figure 7

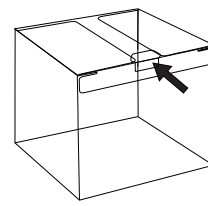


Figure 8

1. Open and crease edges to create box.

### TO CLOSE BOTTOM

1. Crease edges. (See Figure 1)
2. Fold down flaps A1 and A2. (See Figure 2)
3. Fold down flap B. (See Figure 3)
4. Fold down flap C over all other flaps and insert half circles into slots on flap B to close. (See Figure 4)

### TO CLOSE TOP

1. Flip box over and crease edges. (See Figure 5)
2. Fold down side flaps. (See Figure 6)
3. Tuck top closed. (See Figure 7)
4. Insert tab to secure closure. (See Figure 8)