

ASSEMBLY

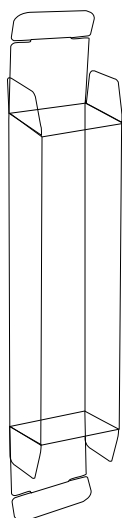


Figure 1

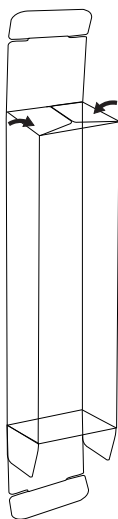


Figure 2

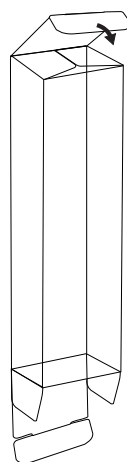


Figure 3



Figure 4

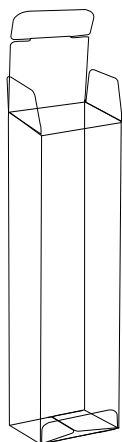


Figure 5

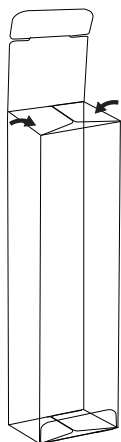


Figure 6

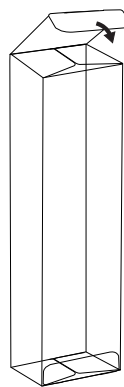


Figure 7

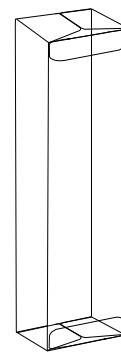


Figure 8

1. Open and crease edges to create box.

TO CLOSE BOTTOM

2. Crease edges. (See Figure 1)
3. Fold down side flaps. (See Figure 2)
4. Tuck bottom closed. (See Figures 3-4)

TO CLOSE TOP

1. Flip box over and crease edges. (See Figure 5)
2. Fold down side flaps. (See Figure 6)
3. Tuck top closed. (See Figures 7-8)