

M-SCOPE

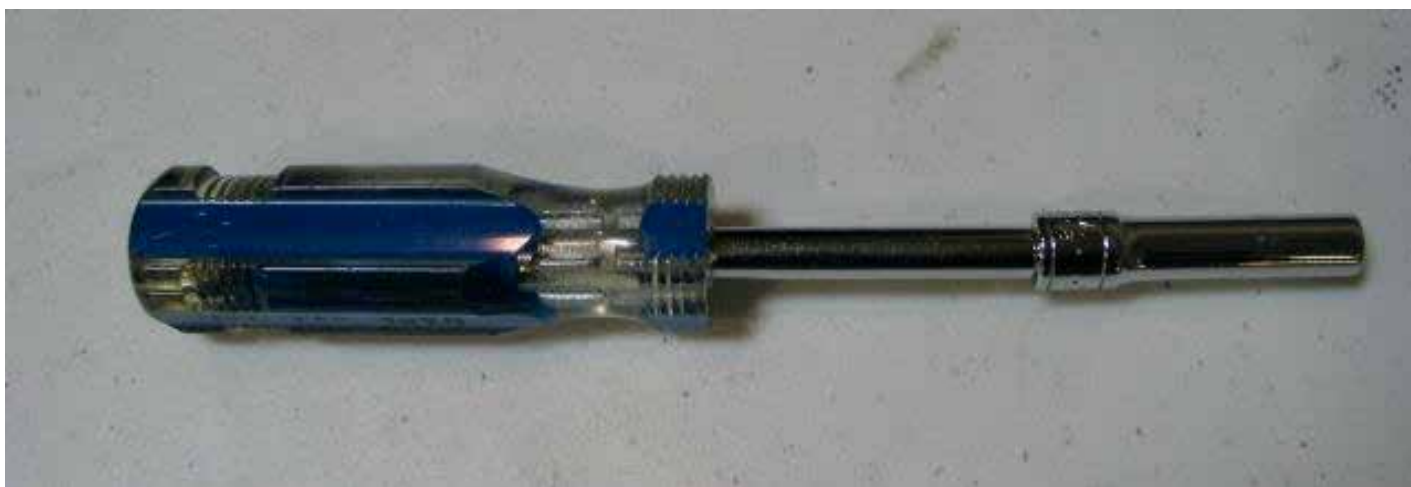
Battery Changing Instruction



ULINE H-8544

1-800-295-5510

0120 IH-8544VND



Tool Required:
1/4" Nut Driver with deep socket
(Max. O.D. 3/8")
note: a socket with a 3/8" drive
will be too big and will not go
into screw hole.

Step #1
Flip base over to reveal
21 screws that must be
removed



Step #2 Remove screws using 1/4" nut driver



ULINE H-8544

1-800-295-5510

0120 IH-8544VND

Step #3

Remove back plate



Caution: Please assure that the out riggers do not move out of place. If these move the back plate will not close properly



Battery Located at center of base
right below circuit board and



ULINE H-8544

1-800-295-5510

0120 IH-8544VND

Step #4 disconnect terminals from battery by pulling terminal lugs off



Step #5 remove old battery

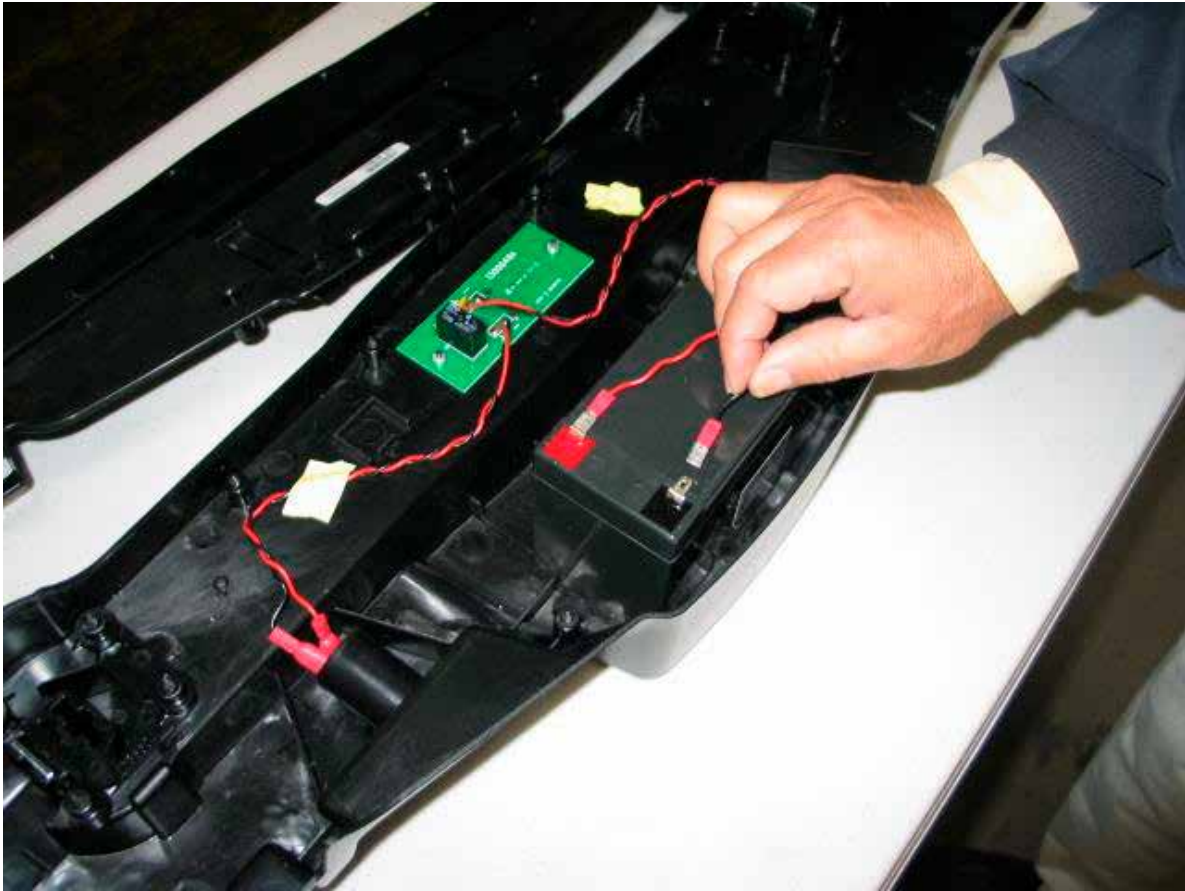


ULINE H-8544

1-800-295-5510

0120 IH-8544VND

Step #6 Drop new battery into base as shown below, and re-connect terminals



ULINE H-8544

1-800-295-5510

0120 IH-8544VND

Step #7
Replace back plate and refasten with 21 screws

