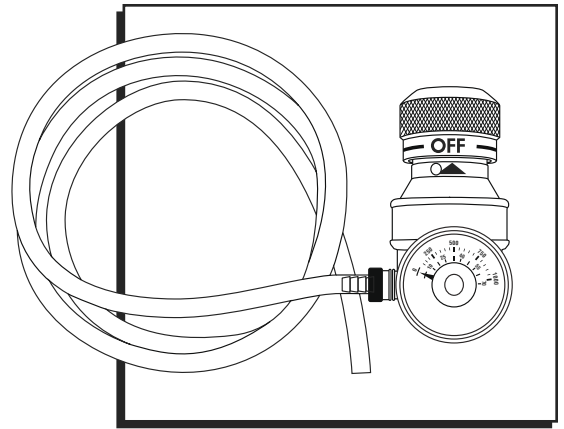
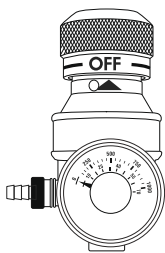


**ULINE** H-7289, H-7290  
H-7291, S-22503  
**SINGLE-GAS DETECTOR  
ACCESSORIES**

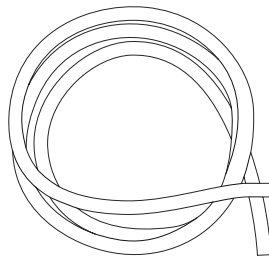
1-800-295-5510  
uline.com



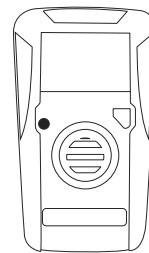
## ACCESSORIES



Flow Regulator



Bump Test Tube



Single-Gas Detector

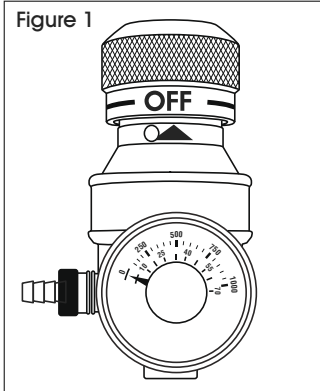


Single-Gas Detector  
Adapter

## USAGE

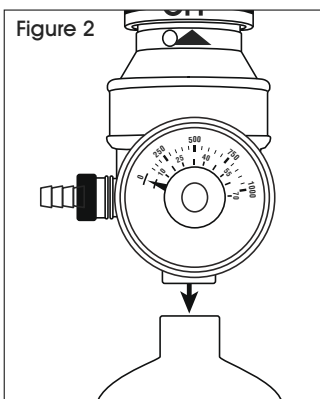
1. Assure the knob on top of the flow regulator is set in the off position.  
(See Figure 1)

Figure 1



2. Screw the flow regulator into the calibration gas cylinder, making sure there is a tight seal.  
(See Figure 2)

Figure 2

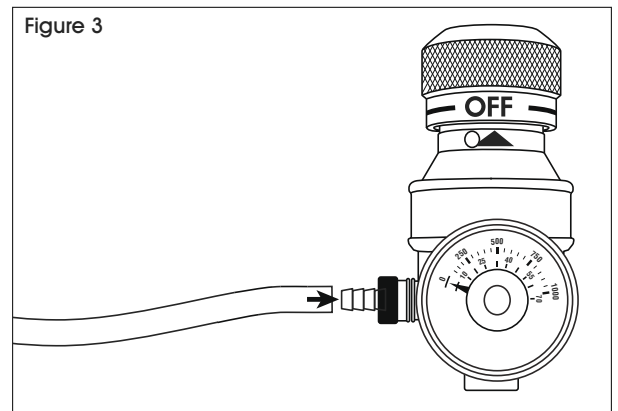


3. Connect the plastic bump test tube to the flow regulator outlet by sliding the tube over the grooves of the outlet.



**NOTE:** Make sure there is a tight seal before moving forward. The tube should slide over all the grooves on the flow regulator outlet.

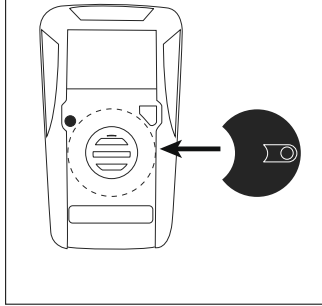
Figure 3



## USAGE CONTINUED

4. Locate the adapter included with the single-gas detector, and snap the adapter to the sensor on the detector. (See Figure 4)

Figure 4



5. Make sure the detector is turned on before performing a bump test or calibration test.
6. Open the valve on the flow regulator by turning the knob at the top. Gas will start to flow through the tube and pass over the sensors on the gas detector. (See Figure 5)
7. Detector will indicate results through visual, audio or vibrated cues.
8. Once test is complete, turn knob on flow regulator back to off position to close valve. Unscrew flow regulator from gas cylinder and remove tube and adapter from detector.

Figure 5

