



THE JOB PRO®

PARTS LIST FOR
JP-3003-3MHB
(AFTER SERIAL #10817968)

Engine Oil Grade:	SAE10W-30
Engine Oil Capacity:	37 oz.
Pump Oil Grade:	Mi-T-M Pump Oil #AW-4085-0016
Pump Oil Capacity:	14 oz.
Nozzle Size:	3.5

This Parts Listing has been compiled for your benefit. You can be assured your Mi-T-M Cold Water Pressure Washer was constructed and designed with quality and performance in mind using over 25 years experience in the pressure washer business. Each component has been rigorously tested to insure the highest level of acceptance.

The contents of this Parts Listing are based on the latest product information available at the time of publication. Mi-T-M reserves the right to make changes in price, color, materials, equipment, specifications or models at any time without notice.

WARNING

THIS IS A PROFESSIONAL HIGH PRESSURE, COLD WATER PRESSURE WASHER. CAUTION SHOULD BE OBSERVED WHEN USING OR REPAIRING THIS UNIT! READ AND FOLLOW THE SAFETY WARNINGS LISTED BELOW BEFORE ATTEMPTING ANY REPAIRS ON THIS PRESSURE WASHER!

SAFETY WARNINGS

1. NEVER alter or modify the equipment. Be sure any accessory items and system components being used will withstand the pressure developed. Use only genuine Mi-T-M parts for repair of your pressure washer. Failure to do so can cause hazardous operating conditions and will VOID warranty.
2. NEVER make adjustments on machinery while the unit is connected to the engine without first removing the ignition cable from the spark plug. Turning over the machinery by hand during adjustment or cleaning might start the engine and machinery with it, causing serious injury to the operator.
3. Know how to stop and bleed pressures quickly. Be thoroughly familiar with controls.
4. Before servicing the unit, turn unit off, relieve the water pressure and allow the unit to cool down. Do not make repairs while the unit is running. Service in a clean, dry, flat area. Block the wheels to prevent the unit from moving. Be especially careful to properly dispose of any flammable materials.
5. After testing the machine, DO NOT leave the pressurized unit unattended. Shut off the unit and release trapped pressure before leaving.

Table of Contents

SPECIFICATIONS	3
NOTES	4
NOTES	5
FRAME ASSEMBLY FOR JP-3003-3MHB (AFTER SERIAL #10817968)	6
PUMP ASSEMBLY (3-0389)	8
UNLOADER ASSEMBLY (8-0630)	10

SPECIFICATIONS

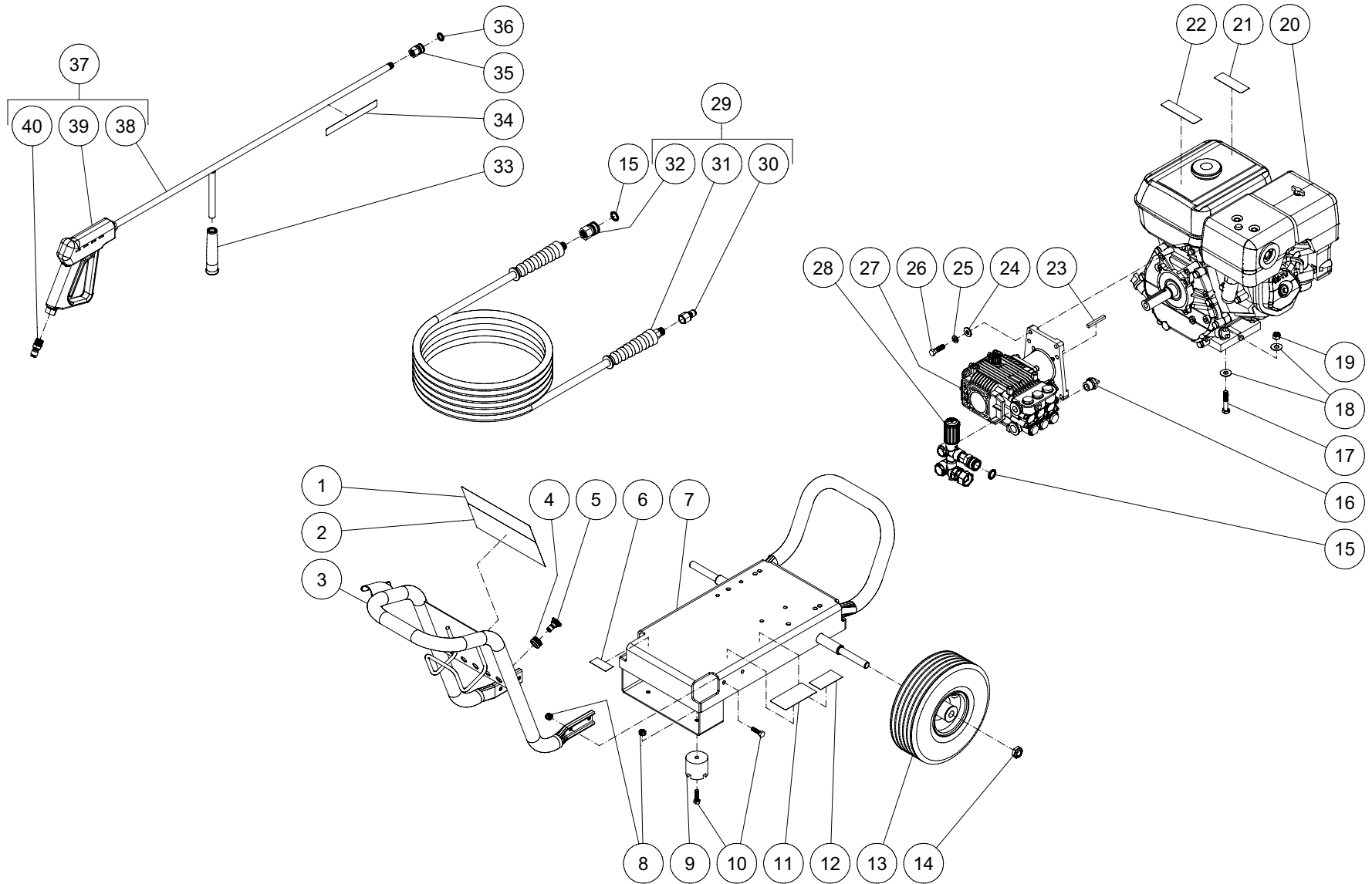
MODEL NUMBER	JP-3003-3MHB
Operating Pressure (PSI/Bar):	3000/206.8
High Pressure Nozzle:	3.5
Water Volume (GPM/lpm):	3.0/11
Engine:	Honda
Model	EX27
Engine Type	4 Stroke, Overhead Valve, Single Cylinder
Oil Type	SAE 10W-30
Oil Capacity (oz./liters)	37/1.1
Low Oil Protection	Oil Alert™
Fuel Type	Unleaded Gasoline 86 Octane Minimum
Fuel Capacity (gallon/ liters)	1.6/6.0
Starting	Recoil
Maximum No Load RPM	3600 (+/- 100) RPM
Pump:	Direct Driven, Oil Bath, Triplex Piston
Oil Type	Mi-T-M Pump Oil #AW-4085-0016
Oil Capacity (oz./liters)	14/.4
Plungers	Ceramic
Manifold	Forged Brass
Valves	Stainless Steel
Unloader	Adjustable
Thermal Relief Valve	Relieves heated water during unloader bypass stage
Unit Net Weight (lbs/Kg)	129/58.5
Unit Shipping Weight (lbs/Kg)	169/76.5
Unit Net Dimension (in/cm)	34Lx23.5Wx25.5H/86Lx60Wx65H
Unit Shipping Dimension (in/cm)	41Hx26Wx33H/104Lx66Wx84H

NOTES

DATE	SERIAL NUMBER	REASON FOR CHANGE
10/9/2014	10817968	REPLACED FRONT HANDLE 7-0194 WITH 7-0256
11/27/19		REMOVED SUBARU

NOTES

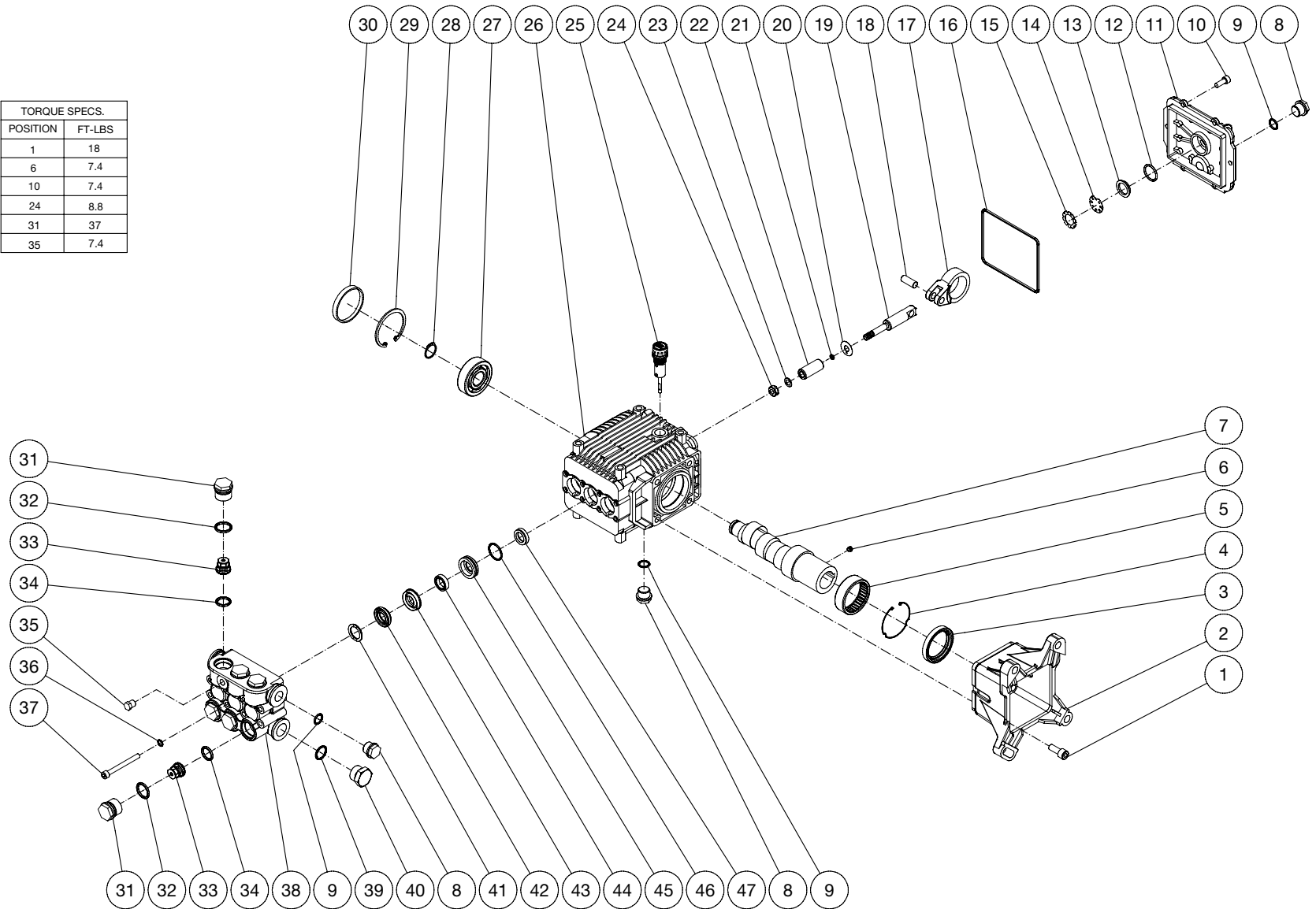
FRAME ASSEMBLY FOR JP-3003-3MHB (AFTER SERIAL #10817968)



FRAME ASSEMBLY			
ITEM	TITLE	PART #	QTY
1	DECAL	34-2769	1
2	DECAL - WARNING/CAUTION/OPERATION (SEE 71-0065)	N/A	1
3	HANDLE	7-0276A01	1
4	GROMMET	33-0001	5
5	NOZZLE	18-0392	1
-	NOZZLE	18-0393	1
-	NOZZLE	18-0395	1
6	DECAL - MADE IN USA	34-3553	1
7	FRAME	5-0254A01	1
8	LOCKNUT	30-0157	6
9	ISOLATOR	14-0008	2
10	BOLT	27-0068	6
11	DECAL- SILVER STICKER	N/A	1
12	DECAL- MOBILE PRO	34-3585	1
13	WHEEL	14-0161	2
14	LOCKNUT	30-0117	2
15	O-RING	25-0123	2
16	RELIEF VALVE	22-0005	1
17	BOLT	27-0121	4
18	WASHER	28-0023	8
19	LOCKNUT	30-0159	4
20	ENGINE - HONDA	1-0162	1
21	DECAL - RISK OF FIRE (SEE 71-0065)	N/A	1
22	DECAL - RISK OF BURNS (SEE 71-0065)	N/A	1
23	KEY	43-0078	1
24	WASHER	28-0022	4
25	LOCKWASHER	29-0008	4
26	BOLT	27-0118	4
27	PUMP	3-0389	1
28	UNLOADER ASSY WITHOUT CHEM INJ	8-0630	1
29	HOSE ASSEMBLY	851-0338	1
30	QUICK CONNECT	17-0006	1
31	HOSE	15-0209	1
32	QC SOCKET	17-0004	1
33	GRIP	7-0002	1
34	DECAL - RISK OF INJECTION (SEE 71-0065)	N/A	1
35	QUICK CONNECT	17-0001	1
36	O-RING	25-0122	1
37	GUN/WAND ASSEMBLY	851-0095	1
38	WAND (INCLUDES GRIP & QUICK CONNECT)	16-0418	1
39	GUN	16-0001	1
40	QUICK CONNECT	17-0005	1
-	DECAL SET	71-0065	1

PUMP ASSEMBLY (3-0389)

TORQUE SPECS.	
POSITION	FT-LBS
1	18
6	7.4
10	7.4
24	8.8
31	37
35	7.4



3-0389 090120

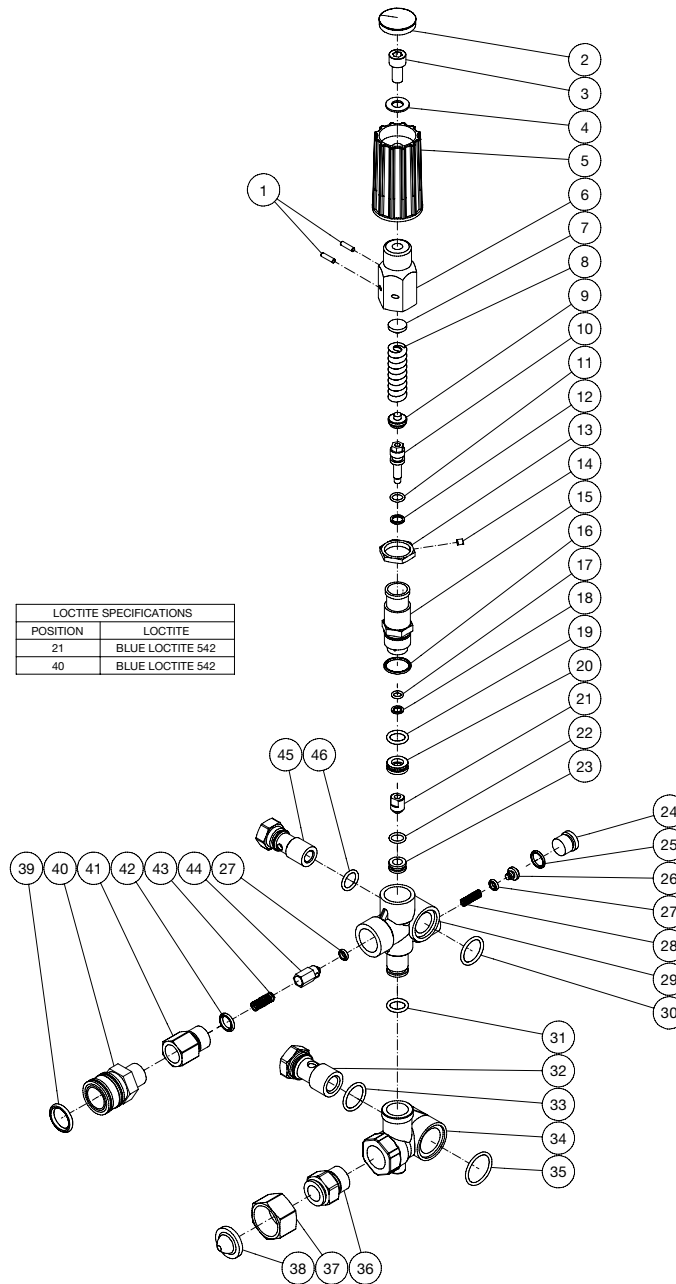
PUMP ASSEMBLY

ITEM	DESCRIPTION	PART #	QTY	ITEM	DESCRIPTION	PART #	QTY
1	SCREW	27-8432	4	25	OIL DIPSTICK	39-0090	1
2	PUMP FLANGE	46-1244	1	26	CRANKCASE	46-0724	1
3	OIL SEAL	26-0192	1	27	BALL BEARING	48-0063	1
4	RETAINING RING	46-0667	1	28	SNAP RING	46-0732	1
5	NEEDLE BEARING	48-0059	1	29	SNAP RING	46-0676	1
6	SET SCREW	27-8886	1	30	BEARING CAP	46-0725	1
7	CRANKSHAFT	46-0717	1	31	VALVE CAP	39-0087	6
8	PLUG	39-0086	3	32	O-RING	25-0160	6
9	O-RING	25-0325	3	33	SINGLE VALVE ASSEMBLY (SEE KIT 70-0161)	70-0161	6
10	BOLT	27-8888	6	34	O-RING (SEE KIT 70-0161)	25-0386	6
11	CRANKCASE COVER	46-0719	1	35	PLUG	39-0097	1
12	O-RING	25-0370	1	36	LOCKWASHER	29-0153	8
13	OIL SIGHT GLASS	46-0670	1	37	BOLT	27-8875	8
14	OIL REFLECTOR	46-0824	1	38	MANIFOLD	46-0730	1
15	SPRING RETAINER	46-0671	1	39	O-RING	25-0372	1
16	O-RING	25-0398	1	40	PLUG	39-0088	1
17	CONNECTING ROD	46-0720	3	41	SUPPORT RING (SEE KIT 70-0182)	70-0182	3
18	PISTON PIN	46-0721	3	42	V PACKING (SEE KIT 70-0181)	46-0729	3
19	PLUNGER ROD	46-0722	3	43	PACKING RETAINER	46-0728	3
20	SLINGER WASHER	28-1027	3	44	LP SEAL (SEE KIT 70-0181)	46-0727	3
21	O-RING	25-0371	3	45	LP RETAINER	46-0726	3
22	PISTON - CERAMIC SLEEVE	46-0723	3	46	O-RING (SEE KIT 70-0181)	25-0149	3
23	WASHER	26-0187	3	47	OIL SEAL	26-0193	3
24	NUT	30-6016	3				

REPLACEMENT KIT

KIT #	DESCRIPTION	ITEMS	# OF ASSEMBLIES	# OF CYLINDERS
-	KIT - OIL SEALS	3,16,30,47	1,1,1,3	- (3)
-	KIT - PISTONS	20-24	3	3
70-0181	KIT - HIGH PRESSURE SEALS	42,44,46	3	3
70-0182	KIT - SUPPORT RINGS	41	3	3
70-0161	KIT - VALVES	33,34	6	3

UNLOADER ASSEMBLY (8-0630)



8-0630 080520

UNLOADER ASSEMBLY			
ITEM	TITLE	PART #	QTY
1	SECURING PIN (SEE 70-0659)	46-1602	2
2	KNOB (SEE 70-0659)	7-0260	1
3	BOLT (SEE 70-0659)	27-8431	1
4	WASHER (SEE 70-0659)	28-0003	1
5	CAP (SEE 70-0659)	7-0259	1
6	KNOB (SEE 70-0659)	SEE KIT	1
7	SPRING SEAT (SEE 70-0659)	SEE KIT	1
8	SPRING (SEE 70-0659)	SEE KIT	1
9	SPRING SEAT (SEE 70-0659)	SEE KIT	1
10	VALVE ROD (SEE 70-0659)	SEE KIT	1
11	O-RING (SEE 70-0659)	25-0651	1
12	SUPPORT RING (SEE 70-0659)	SEE KIT	1
13	JAM NUT (SEE 70-0659)	SEE KIT	1
14	SET SCREW (SEE 70-0659)	8-0479	1
15	UNLOADER VALVE BODY (SEE 70-0659)	SEE KIT	1
16	O-RING (SEE 70-0659)	25-0652	1
17	O-RING (SEE 70-0659)	25-0163	1
18	SUPPORT RING (SEE 70-0659)	SEE KIT	1
19	O-RING (SEE 70-0659)	25-0655	1
20	BY PASS JET UNLOADER (SEE 70-0659)	SEE KIT	1
21	BULLET (SEE 70-0659)	SEE KIT	1
22	O-RING (SEE 70-0659)	25-0656	1
23	VALVE SEAT (SEE 70-0659)	SEE KIT	1
24	PLUG (SEE 70-0658)	39-0379	1
25	O-RING (SEE 70-0658)	25-0691	1
26	SPRING BASE (SEE 70-0658)	46-1603	1
27	O-RING (SEE 70-0500 AND 70-0658)	25-0690	2
28	SPRING (SEE 70-0658)	46-1604	1
29	VALVE HOUSING	46-1619	1
30	O-RING	25-0664	1
31	O-RING	25-0684	1
32	INLET BANJO BOLT	8-0595	1
33	O-RING	25-0602	1
34	BY PASS HOUSING	46-1620	1
35	O-RING	25-0654	1
36	INLET CONNECTOR (SEE 23-0095)	SEE KIT	1
37	SWIVEL NUT (SEE 23-0095)	SEE KIT	1
38	FILTER (SEE 23-0095)	19-0001	1
39	O-RING	25-0123	1
40	QUICK CONNECT SOCKET	17-0007	1
41	OUTLET CONNECTOR	46-1389	1
42	O-RING	25-0663	1
43	SPRING (SEE 70-0500)	SEE KIT	1
44	CHECKING VALVE (SEE 70-0500)	SEE KIT	1
45	OUTLET BANJO BOLT	8-0594	1
46	O-RING	25-0169	1

KIT #	DESCRIPTION	ITEMS	# OF ASSEMBLIES
23-0095	KIT - GARDEN HOSE INLET ASSY	36-38	1
70-0500	KIT - NON-RETURN VALVES	43-44, 27	1
70-0658	KIT - EZ START	24-28	1
70-0659	KIT - UNLOADER REBUILD	1-23	1

Manufactured by Mi-T-M
50 MI-T-M Drive, Peosta IA 52068
563-556-7484/ Fax 563-556-1235