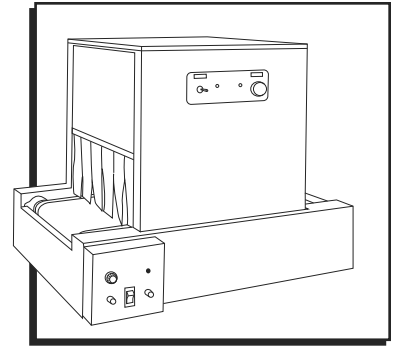


ULINE H-2035 SHRINK TUNNEL LEG KIT

1-800-295-5510
uline.com



LEG KIT INSTALLATION AND SETUP



NOTE: Leg kit works with both US model H-2034 and Canada model H-4018.



CAUTION! Assembling the leg kit to the conveyor can be dangerous. Two people or a mechanical lift device must be used to position the conveyor above the leg kit until they are attached.

SET-UP INSTRUCTIONS

1. Remove the leg kit from the crate. Inspect for damage.
2. To adjust leg length, remove shipping bolts from legs (1 bolt per leg). Adjust leg length by measuring the desired height and subtracting 12" to account for the conveyor and caster height.
3. Place legs upside down on floor. Position shelf on legs. Insert socket screws through shelf and each leg from outside (7 places per leg). Tighten screws with flat washers, lock washers and nuts. Use a socket wrench. (See Figure 1)

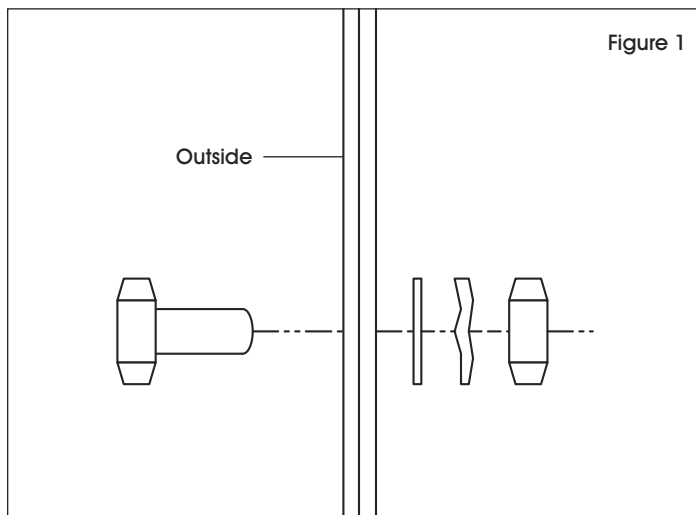
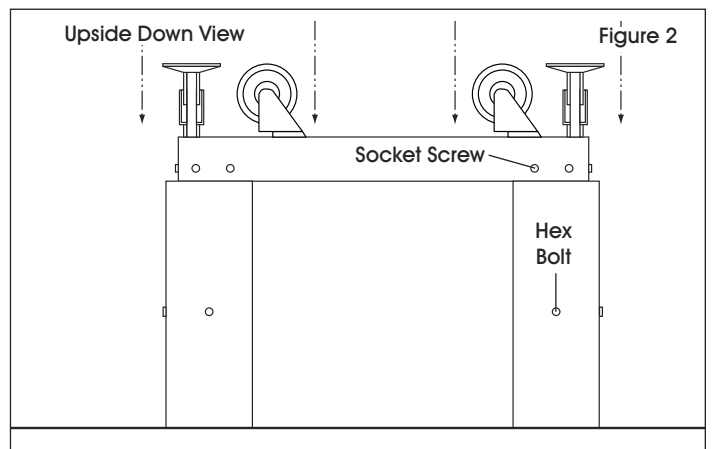


Figure 1

4. Screw feet into threaded holes provided on bottom of the shelf. Insert casters into nylon insert next to feet. (See Figure 2)



5. Turn the leg kit right side up. Place conveyor on top of the leg kit assembly. Insert hex bolts through the conveyor and leg kit (2 bolts per corner). Tighten bolts with flat washers, lock washers and nuts. (See Figure 3)

