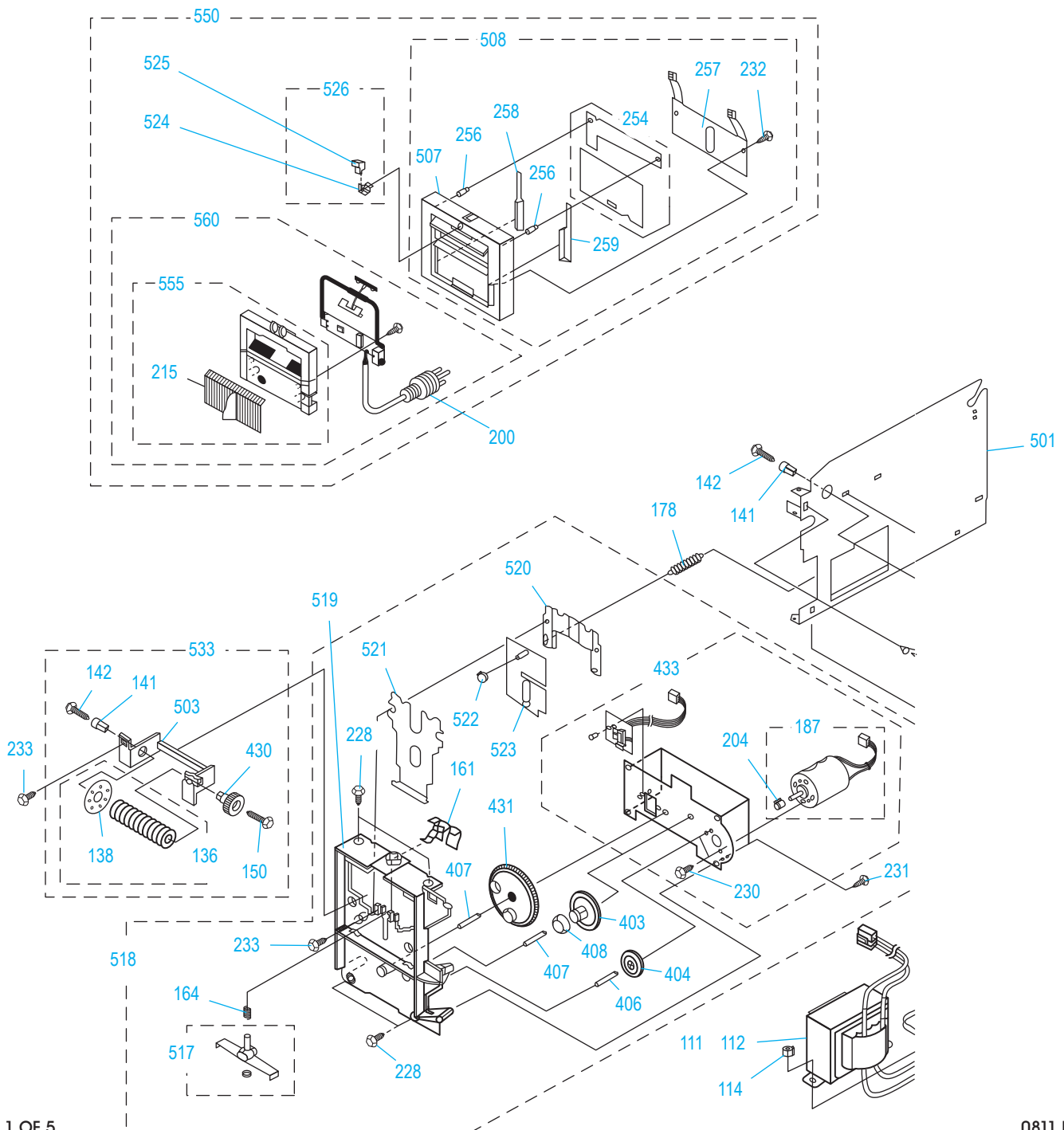
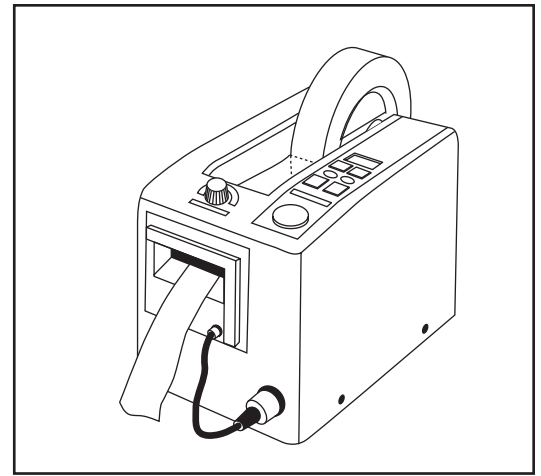


ULINE H-99

INDUSTRIAL AUTOMATIC TAPE DISPENSER

1-800-295-5510
uline.com



ULINE H-99
INDUSTRIAL AUTOMATIC
TAPE DISPENSER

1-800-295-5510
 uline.com

#	DESCRIPTION	QTY.	ULINE PART NO.	MFG. PART NO.
101	Main Unit Cover	1	H-99-101	ZCM1000P101
102	Face Decoration Plate	1	H-99-102	ZCM1000P102
105	Clear Plate	1	H-99-105	ZCM1000P105
106	Pressure Knob	1	H-99-106	ZCM1000P106
107	Core Holder	1	H-99-107B	ZCM1000P107B
111	Transformer 110V	1	H-99-111	ZCM1000P111
111	Transformer 230V	1	-----	ZCM1000P112
113	Small Screw Cross Hole	2	H-99-113	ZCM1000P113
114	Hexagonal Nut w/ Spring Washer	1	H-99-114	ZCM1000P114
115	Bottom Plate	1	H-99-115	ZCM1000P115
116	Rubber Feet	4	H-99-116	ZCM1000P116
118	Power Switch	1	H-99-118	ZCM1000P118
120	Fuse - 1 Amp	1	H-99-120	ZCM1000P120
121	Fuse Holder	1	H-99-121	ZCM1000P121
124	Plate	1	H-99-124	ZCM1000P124
136	Separating Roller	1	H-99-136	ZCM1000P136
138	Separating Roller Ring Silicone Rubber	10	H-99-138	ZCM1000P138
141	Roller Shaft	2	H-99-141	ZCM1000P141
142	Screw Cross Tip	1	H-99-142	ZCM1000P142
146	Bearings	2	H-99-146	ZCM1000P146
150	Tapping Screw Cross Tip	2	H-99-150	ZCM1000P150
154	Pressure Roller	1	H-99-154	ZCM1000P154PP5
155	Pressure Roller Collar	2	H-99-155	ZCM1000P155
161	Cutter Holder Spring 2	1	H-99-161	ZCM1000P161
164	Roller Pressure Spring	1	H-99-164	ZCM1000P164
178	Spring	1	H-99-178	ZCM1000P178
187	Motor Unit w/ Pinion Gear	1	H-99-187	ZCM1000P187
200	Connector 4 (Old Style - 4 pin)	1	H-99-200	ZCM1000P200
200	Connector 4 (New Style - 3 pin)	1	H-99-2001	ZCM1000P200-1
204	Pinion Gear 12	1	H-99-204	ZCM1000P204
206	Power Cord 110V	1	H-99-205	ZCM1000P206S
206	Power Cord 230V	1	-----	ZCM1000P206-2
215	Cover For Non-Contact	1	H-99-215	ZCM1000P215
228	Screw Cross Tip	4	H-99-228	ZCM1000P228
229	Tapping Screw Cross Tip	1	H-99-229	ZCM1000P229
230	Small Screw Cross Tip	1	H-99-230	ZCM1000P230
231	Cutter Gear Cover Screw/Cross Tip	1	H-99-231	ZCM1000P231
232	Cutter Spring Control Screw/Cross Tip	1	H-99-232	ZCM1000P232

ULINE H-99
INDUSTRIAL AUTOMATIC
TAPE DISPENSER

1-800-295-5510
 uline.com

#	DESCRIPTION	QTY.	ULINE PART NO.	MFG. PART NO.
233	Body Cover Screw Cross Tip	6	H-99-233	ZCM1000P233
234	Tapping Screw Cross Tip	1	H-99-234	ZCM1000P234
245	Auto Button	1	H-99-245	ZCM1000P245
246	Switch Button 1 (cm)	1	H-99-246	ZCM1000P246
247	Switch Button 1 (mm)	1	H-99-247	ZCM1000P247
248	Switch Button 2 (Cut)	1	H-99-248	ZCM1000P248
249	Switch Button 2 (Feed)	1	H-99-249	ZCM1000P249
250	Switch Button 3 (20)	1	H-99-250	ZCM1000P250
251	Switch Button 3 (Reverse)	1	H-99-251	ZCM1000P251
254	Blade Set	1	H-99-254/255	ZCM1000P254
256	Top Blade Holder	2	H-99-256	ZCM1000P256
257	Blade Spring (Old Style - w/o Comb)	1	H-99-257	ZCM1000P257
257	Blade Spring (New Style - w/ Comb)	1	H-99-257PP	ZCM1000P257PP
258	Blade Guide - Right	1	H-99-258	ZCM1000P258
259	Blade Guide - Left	1	H-99-259	ZCM1000P259
312	Feed Roller	1	H-99-312	ZCM1000P312
403	Flat Gear 15	1	H-99-403	ZCM1000P403
404	Flat Gear 16	1	H-99-404	ZCM1000P404
406	Flat Gear Shaft 14	1	H-99-406	ZCM1000P406
407	Flat Gear Shaft 13	1	H-99-407	ZCM1000P407
408	Collar 2	2	H-99-408	ZCM1000P408
418	Gear Plate Installation Unit	1	H-99-418	ZCM1000P418
421	Flat Gear 11	1	H-99-421	ZCM1000P421
422	Flat Gear 12	1	H-99-422	ZCM1000P422
423	Flat Gear 13	1	H-99-423	ZCM1000P423
424	Flat Gear 14	1	H-99-424	ZCM1000P424
427	Feeder Roller Gear 2	1	H-99-427	ZCM1000P427
428	Small Screw w/ Cross Hole	2	H-99-428	ZCM1000P428
430	Separating Roller Gear 2	1	H-99-430	ZCM1000P430
431	Cutter Gear Unit 2	1	H-99-431	ZCM1000P431
433	Gear Cover 2 Unit (For Cutter)	1	H-99-433	ZCM1000P433
435	Motor Unit 4	1	H-99-435	ZCM1000P435
501	Left Plate Unit 2	1	H-99-501	ZCM1000P501
502	Right Plate Unit 3	1	H-99-502	ZCM1000P502
503	Separating Roller Holder	1	H-99-503	ZCM1000P503
504	Main Board Unit 2	1	H-99-504	ZCM1000P504
507	Blade Holder 2	1	H-99-507	ZCM1000P507S

ULINE H-99
INDUSTRIAL AUTOMATIC
TAPE DISPENSER

1-800-295-5510
 uline.com

#	DESCRIPTION	QTY.	ULINE PART NO.	MFG. PART NO.
508	Cutter Holder Unit 2 w/ Blades	1	H-99-508	ZCM1000P508S
517	Roller Pressure Unit 2	1	H-99-517	ZCM1000P517
518	Front Holder 3 Unit	1	H-99-518	ZCM1000P518
519	Front Holder 3	1	H-99-519	ZCM1000P519
520	Cut Lever Pressure 2	1	H-99-520	ZCM1000P520
521	Cut Lever Liner 2	1	H-99-521	ZCM1000P521
522	Cut Lever Shaft Collar	1	H-99-522	ZCM1000P522
523	Cut Lever Unit 2	1	H-99-523	ZCM1000P523
524	Open Spring	1	-----	ZCM1000P524
525	Open Knob	1	-----	ZCM1000P525
526	Open Set (Spring and Knob)	1	H-99-526	ZCM1000P526
528	Pinion Gear Unit 2	1	H-99-528	ZCM1000P528
533	Separating Roller Holder Unit	1	H-99-533	ZCM1000P533
550	Auto Feed Cutter Control Unit w/ Blade	1	H-99-AFCCU	ZCM1000P550S
555	Sensor Cover 2	1	H-99-555	ZCM1000P555
560	Sensor Unit	1	H-99-ZCM	ZCM1000P560-1
	Repair Kit (Not Shown)	1	H-99-REPKIT	ZCM1000PKIT
	Auto Feed Cutter Control Unit (4 prong) (Not Shown)	1	H-99-MA1000	-----
	1 1/4" Reel (Not Shown)	1	-----	ZCM1000P109
	1 1/2" Reel (Not Shown)	1	H-99-CORE	ZCM1000P110
	Manual - English (Not Shown)	1	H-99-286	ZCM1000P286
	Silicone Oil (Not Shown)	1	H-99-289	ZCM1000P289