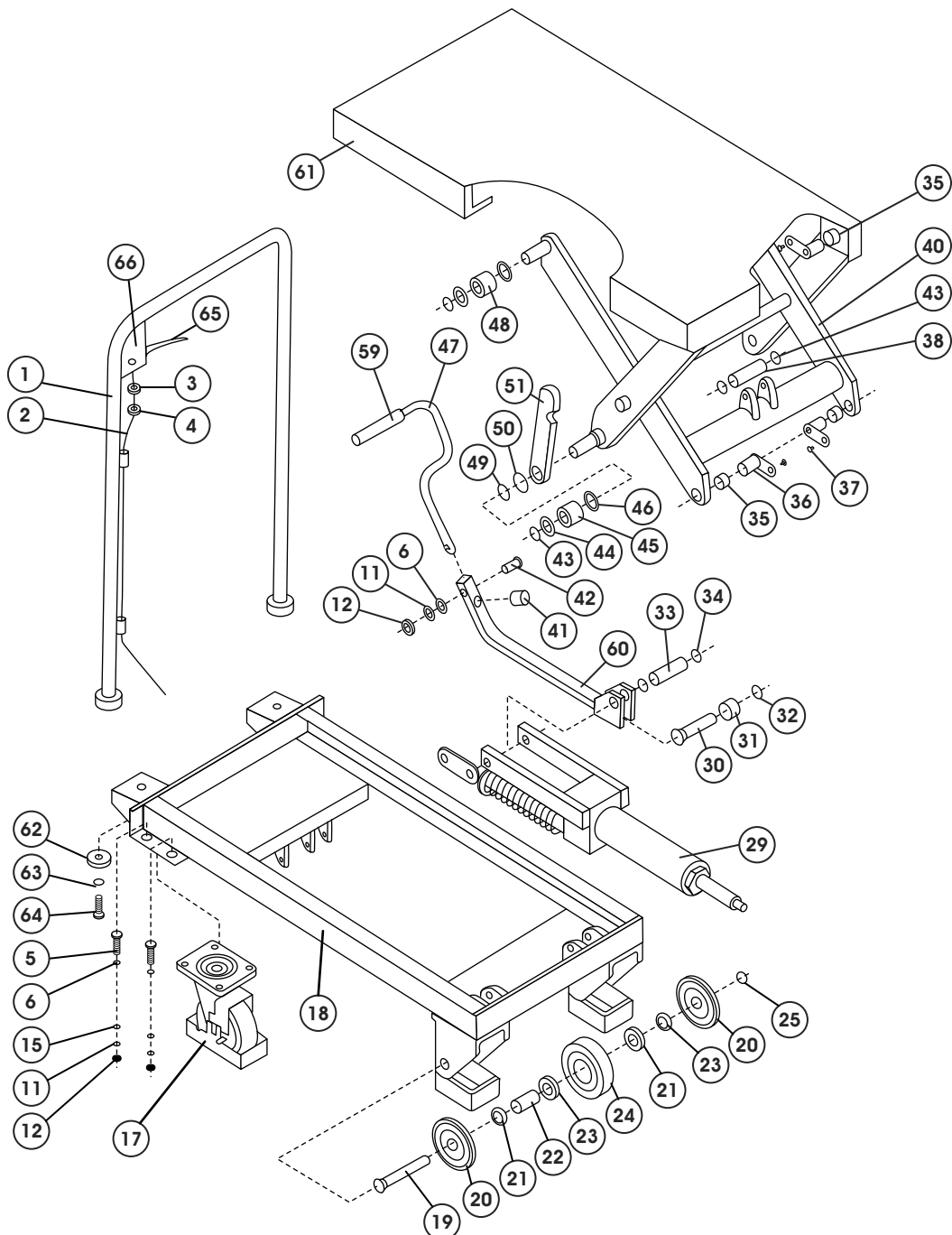


ULINE H-1783
STANDARD LIFT TABLE

1-800-295-5510
uline.com



ULINE H-1783
STANDARD LIFT TABLE

1-800-295-5510
 uline.com

#	DESCRIPTION	QTY.	ULINE PART NO.	MFG. PART NO.
1	Handle Bar	1	-----	-----
2	Pull Rod	1	-----	-----
3	Nut	1	-----	-----
4	Screw	1	-----	-----
5	Bolt	8	-----	-----
6	Washer	9	-----	-----
11	Washer	9	-----	-----
12	Nut	9	-----	-----
15	Washer	8	-----	-----
17	Universal Wheel	2	H-1783SWIVEL	-----
18	Frame	1	-----	-----
19	Shaft	2	-----	-----
20	Cover	4	-----	-----
21	Washer	4	-----	-----
22	Screw	2	-----	-----
23	Bearing	4	-----	-----
24	Wheel	2	-----	-----
	Wheel Complete		H-1783RIGID	-----
25	Retaining Ring	1	-----	-----
29	Pump Unit	1	-----	-----
30	Short Shaft	1	-----	-----
31	Bush	1	-----	-----
32	Retaining Ring	2	-----	-----
33	Short Shaft	1	-----	-----
34	Retaining Ring	2	-----	-----
35	Bush	1	-----	-----
36	L-Pin	4	-----	-----
37	Screw	4	-----	-----
38	Pin	1	-----	-----
40	Arm	1	-----	-----
41	Cushion	1	-----	-----
42	Bolt	1	-----	-----
43	Retaining Ring	6	-----	-----
44	Washer	4	-----	-----
45	Roller	2	-----	-----
46	Washer	2	-----	-----
47	Pedal Bar	1	-----	-----
48	Roller	2	-----	-----

#	DESCRIPTION	QTY.	ULINE PART NO.	MFG. PART NO.
49	Retaining Ring	2	-----	-----
50	Washer	2	-----	-----
51	Support	2	-----	-----
59	Protecting Cover	1	-----	-----
60	Connecting Rod	1	-----	-----
61	Table	1	-----	-----
62	Washer	2	-----	-----
63	Washer	2	-----	-----
64	Nut	2	-----	-----
65	Handle	1	-----	-----
66	Pin	1	-----	-----