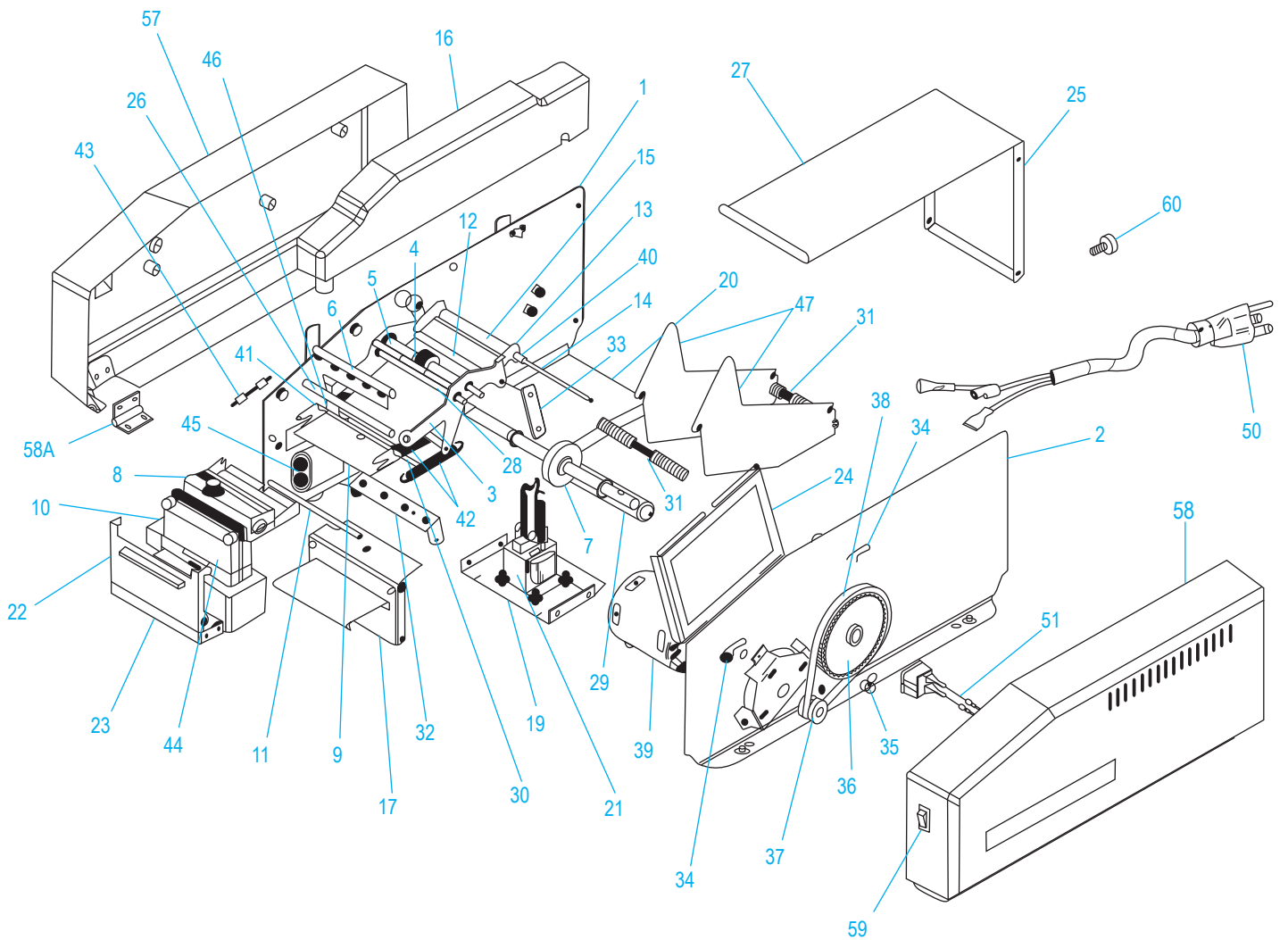
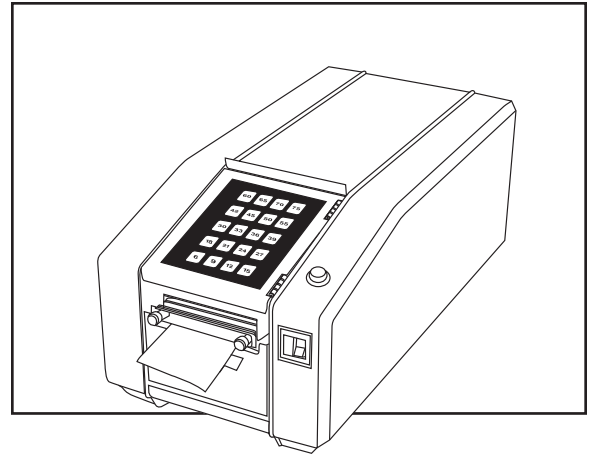


ULINE H-16
ELECTRONIC KRAFT
TAPE DISPENSER

1-800-295-5510
uline.com



ULINE H-16
ELECTRONIC KRAFT
TAPE DISPENSER

1-800-295-5510
 uline.com

#	DESCRIPTION	QTY	ULINE PART NO.	MFG. PART NO.
1	Left Frame Assembly	1	-----	-----
2	Right Frame Assembly	1	-----	-----
3	Rocker Final Assembly	1	H-16-5UN0143	H-16-5UN0143
4	Assembly, Upper Feed Wheel	1	H-16-5UN0180	H-16-5UN0180
5	Upper Feed Shaft	1	H-16-UPFEED	-----
6	Knife Assembly	1	H-16-5UN0211	H-16-5UN0211
7	Assembly, Feed Wheel Shaft	1	-----	-----
8	Assembly, Pressure Plate With Heater	1	H-16-5UN0273	-----
9	Lower Lip	1	H-16-5UN0280	H-16-5UN0280
10	Brush Tank	1	H-16-5UN0330	H-16-5UN0330
11	Platform Rod	1	-----	-----
12	Upper Tape Plate	1	H-16-5UN0370	H-16-5UN0370
13	Lower Tape Plate	1	H-16-5UN0380	H-16-5UN0380
14	Upper Roller Shaft	1	H-16-5UN0390	H-16-5UN0390
15	Upper Roller Assembly	1	-----	-----
16	Water Bottle	1	H-16WB	H-16WB
17	Assembly, Motor Cover	1	-----	-----
18	Motor Pan (Not Shown)	1	-----	-----
19	Solenoid Assembly	1	-----	-----
20	Bottom Separator	1	-----	-----
21	Solenoid	1	H-16-SOLENOI	H-16-SOLENOI
22	Front Cover Assembly	1	H-16-5UN0741	5UN0741
23	Front Cross Member	1	-----	-----
24	Console Assembly	1	-----	-----
	Housing (5Un-081-0) (Part Of #24)		-----	-----
	Keypress Assembly (5Un-106-0) (Part Of # 24)		H-16-5UN1060	H-16-5UN1060
25	Cover, Rear	1	-----	-----
26	Tie Rod	1	-----	-----
27	Cover Hinge Assembly	1	-----	-----
28	Rocker Pivot Shaft	1	H-16-0200	H-16-0200
29	Wood Roller Assembly	1	H-16-ASSEMBL	H-16-ASSEMBL
30	Lower Blade Shaft	1	-----	-----
31	Tape Guide Shaft Assembly	2	-----	-----
32	Lower Blade	1	H-16-0910	H-16-0910

ULINE H-16
ELECTRONIC KRAFT
TAPE DISPENSER

1-800-295-5510
 uline.com

#	DESCRIPTION	QTY	ULINE PART NO.	MFG. PART NO.
33	Center Separator	1	-----	-----
34	Pivot Rod Retainer	2	-----	-----
35	Wire Clamp	4	-----	-----
36	Pulley, Large	1	H-16-ST49	H-16-ST49
37	Pulley, Small	1	-----	-----
38	Timing Belt	1	H-16ST51	H-16ST51
39	Assembly, Motor Cover	1	-----	-----
40	Spacer	2	H-16-SPACER	ST-851
41	Cable Clamp Plate	1	-----	-----
42	Rocker Return Spring	2	-----	-----
43	Assembly, Ground Wire	1	-----	-----
44	Brush	2	-----	-----
45	Capacitor	1	-----	-----
46	Blade Torsion Spring	1	H-16-6001070	H-16-6001070
47	Roll Guide	2	-----	-----
48	Spacer (Not Shown)	2	-----	ST-850
50	Power Cord Assembly	1	-----	-----
51	Heater Socket Assembly	1	H-16HEATRSKT	6001301
52	Controller Board Assembly (Not Shown)	1	H-16-5UN1013	H-16-5UN1013
53	Cable Assembly W/ Connector (Not Shown)	1	H-16-5UN110	H-16-5UN110
54	Fuse (Not Shown)	1	H-16-ST882	H-16-ST882
55	Fuse Carrier (Not Shown)	1	-----	-----
56	Fuse Holder (Not Shown)	1	H-16-ST0837	H-16-ST0837
57	Left Side Cover	1	H-16-LFTCVR	H-16-LFTCVR
58A	Hinge	2	-----	-----
58	Right Side Cover	1	H-16-5UN0920	H-16-5UN0920
59	On/Off Switch	1	H-16ST113	H-16ST113
60	Screw	4	H-16-5T0489	H-16-5T0489