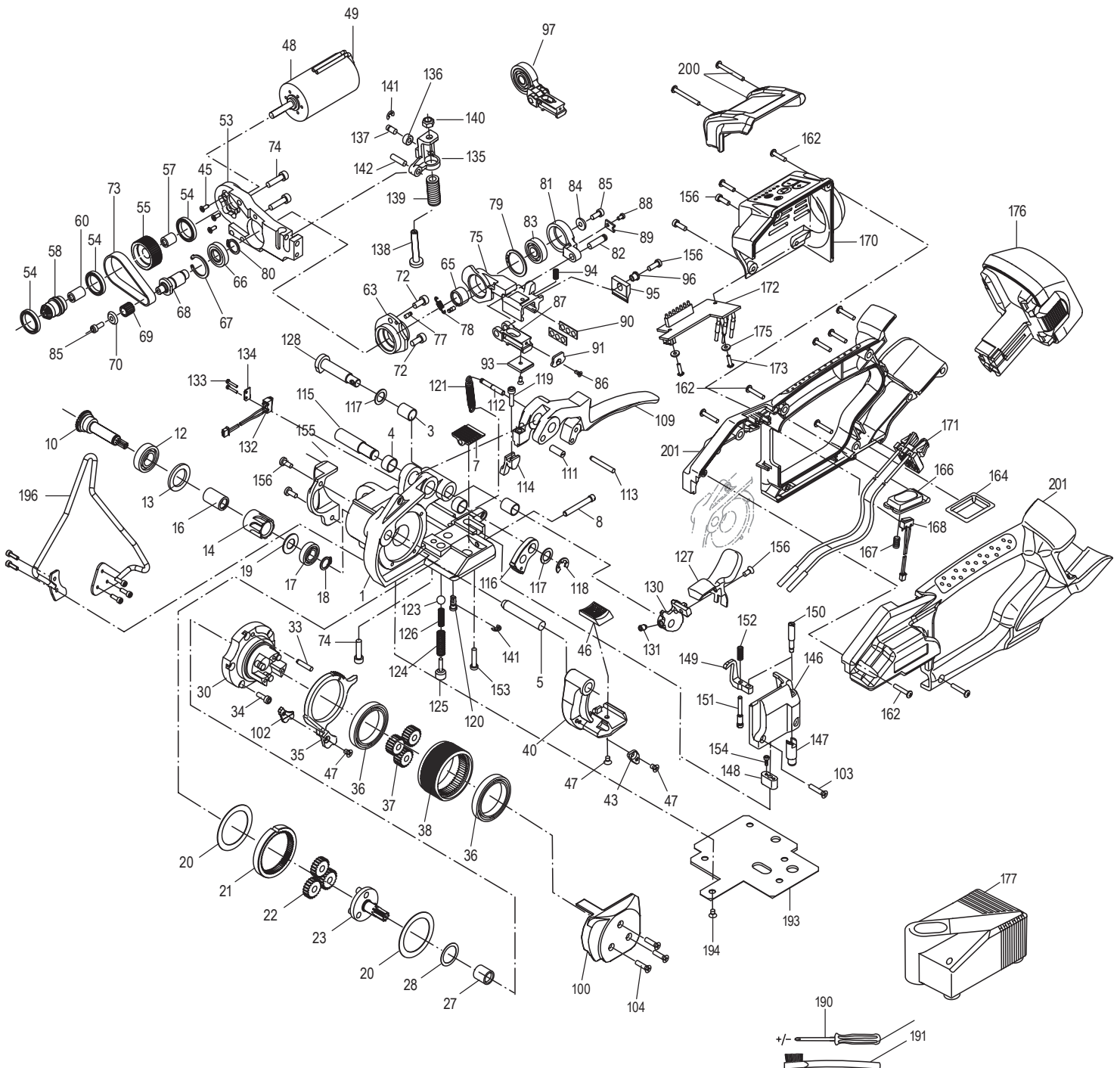
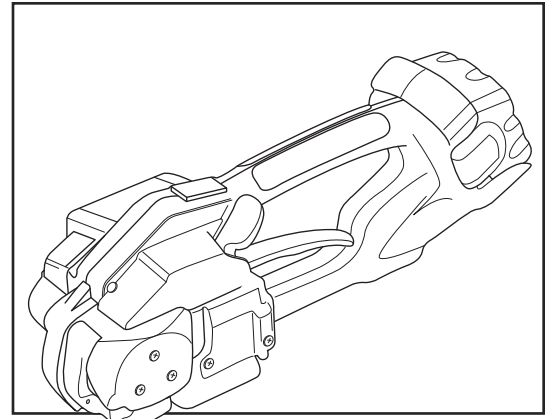


ULINE H-1465 AUTOMATIC SEALLESS COMBO STRAPPING TOOL

1-800-295-5510
uline.com



ULINE H-1465
**AUTOMATIC SEALLESS
 COMBO STRAPPING TOOL**

1-800-295-5510
 uline.com

#	DESCRIPTION	QTY.	ULINE PART NO.	MFG. PART NO.
1	Base Plate Complete, Incl. Pos. 3-5	1	-----	1832.011.135
3	Slide Bearing	2	-----	1935.510.150
4	Slide Bearing	2	-----	1935.512.080
5	Cylinder Pin	1	-----	1921.310.521
7	Tooth Plate Below	1	H-1465-BTM	1832.022.116
8	Set Screw	1	H-2386-SETSW	1832.022.055
10	Bevel Wheel With Pinion	1	-----	1821.061.015
12	Ball Bearing	1	-----	1930.190.154
13	Spacer Ring	1	-----	1832.039.174
14	Blocking Wheel Complete, Incl. Pos. 16	1	-----	1832.039.180
16	Free-Wheel Needle Bearing	1	-----	1926.502.100
17	Ball Bearing	1	-----	1930.190.102
18	Retaining Ring	1	H-624-RING	1920.210.102
19	Spacer Disk	1	-----	1917.401.105
20	Spacer Disk	2	-----	1917.401.365
21	Internal Gear Ring	1	-----	1821.060.017
22	Planetary Wheel, 1st Step	3	-----	1821.060.016
23	Planetary Support Complete	1	-----	1832.039.165
27	Needle Bushing	1	H-1334-63	1933.710.150
28	Spacer Disk	1	-----	1917.401.125
30	Flange Complete, Incl. Pos. 33	1	-----	1832.039.177
33	Cylinder Pin	1	H-1465-33	1921.304.200
34	Cylinder Screw	5	-----	1911.004.124
35	Cam Disk	1	H-1465-189	1832.039.189
36	Ball Bearing	2	H-2385-BEAR	1930.180.356
37	Planetary Wheel, 2nd Step	3	H-2385-PLANT	1821.060.014
38	Tension Wheel	1	H-1465-TW	1821.047.015
40	Rocker	1	-----	1832.031.039
43	Strap Stop, Front, 16 mm	1	-----	1832.031.040
45	Countersunk Screw	6	-----	1914.303.088
46	Tooth Plate	1	H-1465-TOOTH	1821.048.011
47	Countersunk Screw	2	-----	1911.804.064
48	Motor Complete, Incl. Pos. 49	1	H-1274MOTOR	1821.140.066
49	Brushcover-Set	1	H-1274BRCOVER	1821.140.051
53	Carrier	1	-----	1832.039.175
54	Ball Bearing	2	H-1465-BB54	1930.180.152
55	Toothed Belt Wheel Complete, Incl. Pos. 54,57	1	H-1465BLTWHL	1832.039.169
57	Bushing	1	H-1465-BSH57	1926.501.060

ULINE H-1465
**AUTOMATIC SEALLESS
COMBO STRAPPING TOOL**

1-800-295-5510
uline.com

#	DESCRIPTION	QTY.	ULINE PART NO.	MFG. PART NO.
58	Bevel Wheel Complete, Incl. Pos. 54, 60	1	-----	1821.061.016
60	Bushing	1	H-1465-60	1926.502.060
63	Bushing Complete, Incl. Pos. 77	1	-----	1832.022.121
65	Needle Bushing	1	H-1274-120	1933.712.120
66	Ball Bearing	1	H-1465-66	1930.190.122
67	Retaining Ring	1	-----	1920.324.124
68	Eccentric Shaft	1	-----	1832.022.119
69	Pinion	1	-----	1832.022.062
70	Disk	1	-----	1832.022.060
72	Cylinder Screw	2	-----	1911.005.124
73	Toothed Belt	1	H-1465-TB73	1821.067.008
74	Cylinder Screw	3	-----	1911.005.204
75	Swivel Bearing Complete, Incl. Pos. 77	1	H-1465-75	1832.022.112
77	Ridget Pin	1	-----	1922.103.083
78	Tension Spring	1	-----	1821.011.020
79	Retaining Ring	1	-----	1920.223.124
80	Retaining Ring	1	H-771-EXRRNG	1920.212.102
81	Connecting Rod	1	-----	1832.022.143
82	Shaft	1	H-1274-SHAFT	1832.022.144
83	Ball Bearing	1	H-1274-BBEAR	1930.110.092
84	Washer	1	-----	1821.020.104
85	Cylinder Screw	2	H-1465-85	1911.004.104
86	Countersunk Screw	2	-----	1912.203.086
87	Welding Shoe	1	-----	1832.022.142
88	Oval Head Screw	1	-----	1912.403.054
89	Safety Plate	1	-----	1832.022.059
90	Ball Guide	2	-----	1832.022.050
91	Cover Plate	1	-----	1832.022.045
93	Tooth Plate Top	1	H-1465-TOP	1832.022.113
94	Compression Spring	1	H-2385-SPRNG	1821.010.053
95	Cutter Knife	1	H-2386-KNIFE	1821.209.022
96	Flanged Bushing	1	H-2385-FLNGD	1832.022.049
97	Welding Shoe Compl., Incl. 81,82,83,87,88,89	1	H-1465-97	1832.022.146
100	Cover Tensioning	1	-----	1832.011.136
102	Strap Guide, 16 mm	1	-----	1832.042.030
103	Countersunk Screw	1	-----	1911.804.164
104	Countersunk Screw	3	H-1274CNTRSS	1911.804.126
109	Rocker Lever Complete, Incl. Pos. 111-113	1	-----	1832.031.027

ULINE H-1465
AUTOMATIC SEALLESS
COMBO STRAPPING TOOL

1-800-295-5510
 uline.com

#	DESCRIPTION	QTY.	ULINE PART NO.	MFG. PART NO.
111	Threaded Bolt	1	-----	1821.039.024
112	Ridget Pin	1	-----	1922.104.303
113	Cylinder Pin	1	-----	1922.104.300
114	Blocking Pawl	1	-----	1832.031.018
115	Bolt	1	-----	1821.031.048
116	Toothed Segment	1	-----	1832.039.190
117	Spacer Disk	2	-----	1917.411.105
118	Retaining Ring	1	H-2386-RRING	1920.108.102
119	Cylinder Screw	1	-----	1911.004.254
120	Tension Spring Bolt	1	-----	1821.036.003
121	Tension Spring	1	H-1274TSRNG	1821.011.021
123	Globule Hardened	1	H-1274GLOB	1925.010.802
124	Compression Spring	1	H-1274SPRNG	1821.010.052
125	Threaded Bolt	1	-----	1832.011.156
126	Compression Spring	1	H-1274SPRNG2	1821.010.058
127	Welding Button-Set, Incl. Pos. 156	1	-----	1832.022.124
128	Bolt	1	-----	1832.022.099
130	Cam Disk	1	-----	1832.022.117
131	Set Screw	1	-----	1910.605.084
132	Micro Switch, Welding	1	H-1274MSWELD	1821.151.004
133	Oval Head Screw	2	H-2385-PHD61	1912.401.104
134	Shim Plate	1	-----	1832.031.043
135	Spring Bow	1	-----	1832.022.091
136	Roller	1	-----	1832.022.092
137	Shaft	1	-----	1832.022.093
138	Pressure Bolt	1	-----	1832.022.094
139	Spring Bow	1	-----	1821.010.056
140	Locknut	1	-----	1916.306.062
141	Retaining Ring	2	-----	1920.104.072
142	Shaft	1	-----	1821.030.033
146	Cover Welding	1	-----	1832.011.104
147	Strap Guide, 16/19 Mm	1	-----	1832.042.029
148	Strap Stop 16/19 Mm	1	-----	1832.042.028
149	Hook	1	-----	1832.042.017
150	Threaded Bolt	1	H-1465-TBOLT	1832.042.018
151	Pin Screw	1	-----	1832.042.020
152	Compression Spring	1	-----	1821.010.057
153	Oval Head Screw	1	-----	1912.404.254
154	Oval Head Screw	1	-----	1912.403.126

ULINE H-1465
**AUTOMATIC SEALLESS
 COMBO STRAPPING TOOL**

1-800-295-5510
 uline.com

#	DESCRIPTION	QTY.	ULINE PART NO.	MFG. PART NO.
155	Gear Cover	1	-----	1832.011.097
156	Oval Head Screw	6	H-2385-PANHD	1912.404.104
162	Pt-Screw	10	H-1274-162	1914.635.200
164	Protection Plate	1	-----	1832.011.102
166	Switch Button, Yellow	1	-----	1832.011.101
167	Compression Spring	1	H-1274SPRNG	1821.010.054
168	Micro Switch, Tensioning	1	H-1274MSTENS	1821.151.003
170	Motor Cover Complete, Blue	1	H-1274-MCOVR	1832.011.132
171	Contact Plate	1	H-1274-CTPL	1821.152.038
172	Printed Circuit Board Digital	1	H-1465-172	1821.152.045
173	Pt-Screw	2	-----	1914.630.100
175	Washer	2	-----	1917.803.031
176	Battery	1	H-1465-BATT	2179.160
177	Charger	1	H-1465-CHARG	2179.261
190	Screwdriver (Phillips)	1	-----	1821.901.003
191	Wire Brush	1	-----	1821.901.004
193	Protection Plate	1	-----	1832.011.137
194	Countersunk Screw	4	-----	1911.705.084
196	Option: Suspension Bow-Set	1	-----	2179.850
200	Option: Protection Cover-Set	1	H-1274-200	2179.880
201	Housing Assembly	1	H-1465-128	1832.011.128
	Tool-Set	1	-----	1821.901.005
	Protection Plate-Set	1	-----	2179.870
	Battery 14.4V 2.6 AH NIMH	1	-----	2179.165
	Spare Part-Set: Strap Guide 16 mm	1	-----	1832.042.032