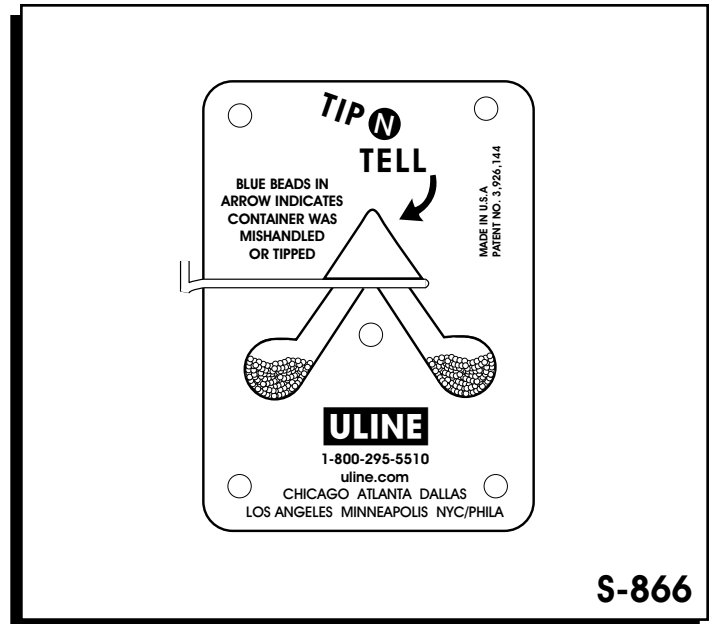


ULINE S-866

**TIP-N-TELL
INDICATORS**

1-800-295-5510

uline.com



S-866

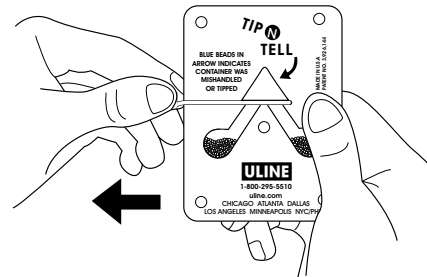
INFORMATION


The TIP-N-TELL come with equal amounts of warning labels, and bill of lading labels to be used as a system for protecting your shipments. We suggest that the bill of lading label be placed on the Bill of Lading to notify the carrier or consignee that the shipment contains a warning device.

- To insure that TIP-N-TELL is in place, your order will come complete with two red on white adhesive warning labels per device. One goes on the package and the other is affixed to the Bill of Lading. The TIP-N-TELL may be placed on the inside or the outside of the package.
- The TIP-N-TELL has a pressure sensitive back to firmly attach it to your package. One edge of the backing sheet contains no adhesive to facilitate removal of the tape prior to placing the TIP-N-TELL on the package.

TO ACTIVATE THE INDICATOR

Hold indicator firmly. Slowly pull out the T bar with the left hand until the slide stops, which is about one inch from the left edge of the indicator. Break the slide by bending the T pin forward over the face of the indicator.



 **NOTE:** If the slide is accidentally pulled all the way out, carefully insert it and pull only to the stop. This will prevent beads from escaping through the slide track if the indicator is tipped.