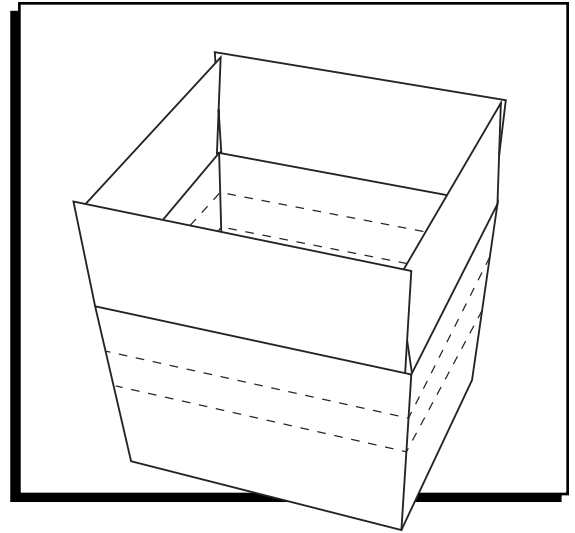


**ULINE**

# MULTI-DEPTH CORRUGATED BOXES

1-800-295-5510  
uline.com

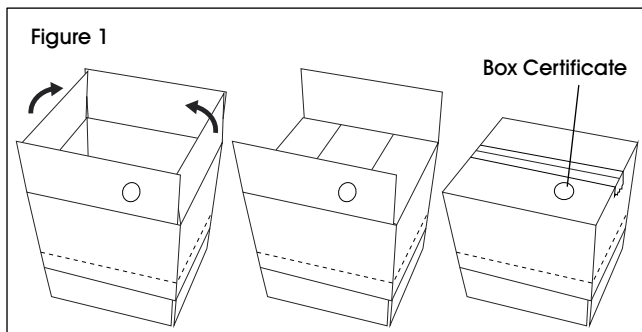


## TOOL NEEDED

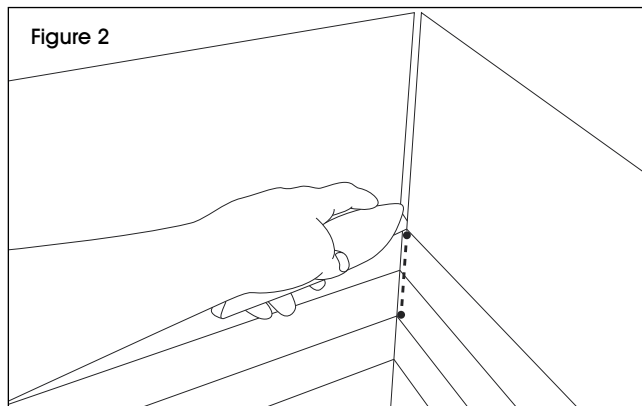


Box Cutter

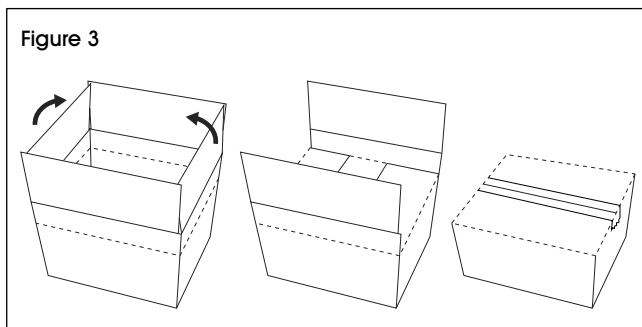
## ASSEMBLY



1. Set box with bottom facing up and fold bottom width flaps. (See Figure 1)
2. Fold bottom length flaps. The circular box certificate should be visible. (See Figure 1)
3. Seal bottom of box with tape. (See Figure 1)



4. Flip box right side up and determine the height needed. Using box cutter, cut a corner from the inside down to the desired-height score. (See Figure 2)
5. Repeat for all four corners.



6. To close the box, fold top width flaps at the desired-height score. (See Figure 3)
7. Fold top length flaps at the desired-height score and seal top of box with tape. (See Figure 3)