

INSTRUCTIONS

1. Remove the Paper Label. (See Figure 1)
 - Prepare the shipping box and item to be packed.
 - Remove the paper information label from the bag.

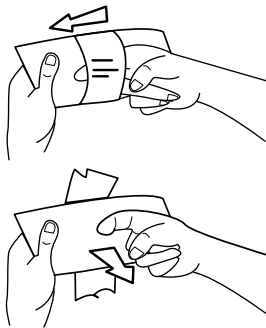


WARNING! To prevent damage due to puncture, never use a sharp object to remove the paper label wrapped around the bag.



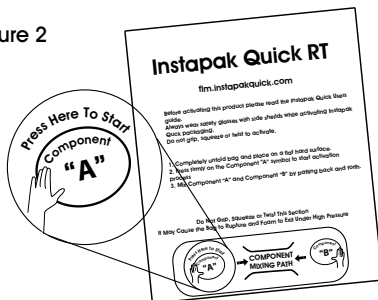
CAUTION! Safety glasses with side shields should be worn while using Instapak foam packaging.

Figure 1



2. Unfold the Bag. (See Figure 2)
 - Completely unfold the bag onto a flat surface.
 - Note the location of the bag activation and venting areas.

Figure 2



3. Press "Start". (See Figure 3)
 - Start the activation process by laying the bag on a flat surface. Press firmly on the "Component A Press Here To Start" symbol on the lower left. You will hear a small "pop" to let you know the inside seal has opened.
 - Do not grip, squeeze or twist to activate. Always place on a flat surface and press firmly on the "Component A" symbol to begin the activation process.



WARNING! Do not press on the "Component B" side first (the right side), to start the bag. This action could cause "Component B" to leak into the outer bag and out of the bag vent holes. Never shake the bag, this may cause foam to exit vent holes.

4. Mix Components A and B. (See Figure 4)
 - Mix Components A and B by patting back and forth 10-20 times on each A and B symbol. You will hear another "pop" and the foam will begin to expand into the bag.



WARNING! Avoid being in the direct path of off-gassing steam to optimize user safety and comfort. This steam is very warm.



CAUTION! Once the bag starts to expand it will become very warm. The word "VENT" at the top of the bag indicates the venting area. The vent is a series of tiny holes that allows the steam to escape.

Figure 3

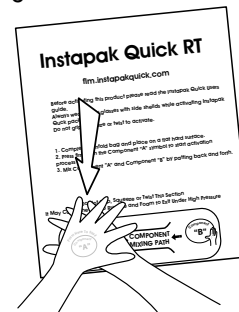
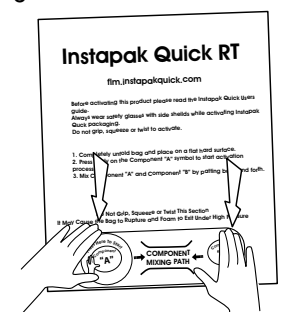


Figure 4



5. Quickly Place the Bag. (See Figure 5)
 - Quickly place the expanding bag of foam into the box.



WARNING! The bag should not be rolled, crumpled, or twisted when placed in the box.

- Never shake the bag, this may cause foam to exit vent holes.
- Avoid folding the bag at the venting area, to allow foam to expand freely and to allow venting to take place.

Figure 5

