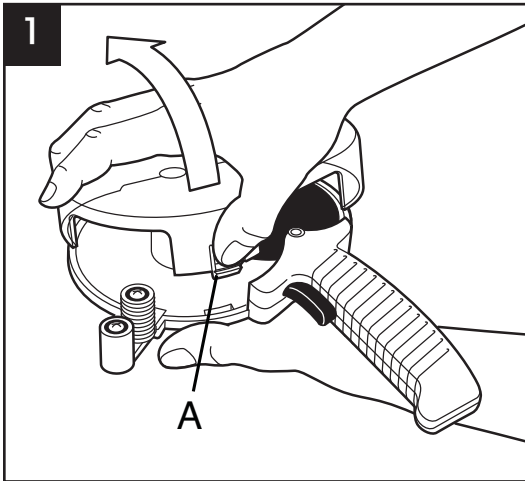
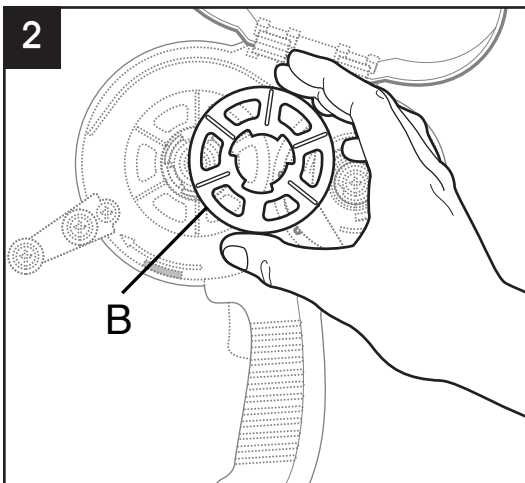
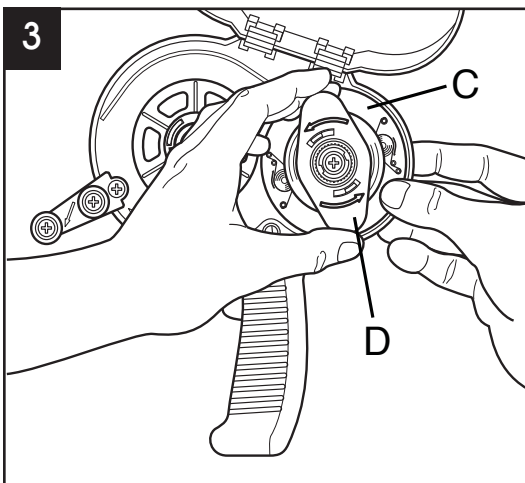


**INSTALL TAPE ROLL**

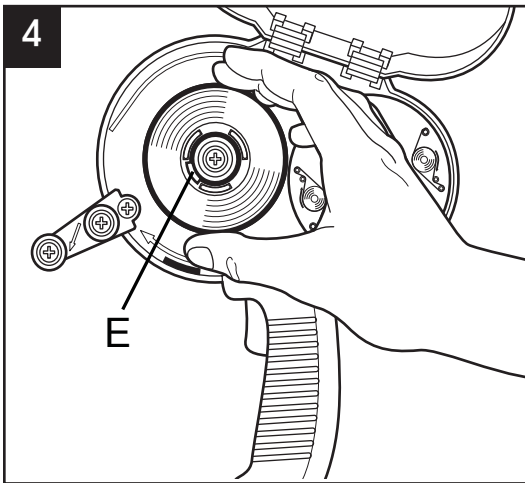
- 1** **OPEN COVER:** Depress latch (A) and lift. See Fig. 1.



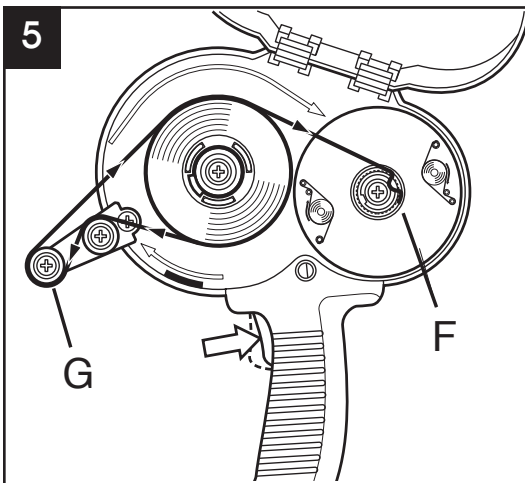
- 2** **USING SPACER: (FOR H-727 ONLY)**  
For 1/2" (12mm) wide tape, leave the tape roll spacer (B) in applicator. If using 3/4" (18mm) wide tape, lift up and remove tape roll spacer from dispenser. See Fig. 2.



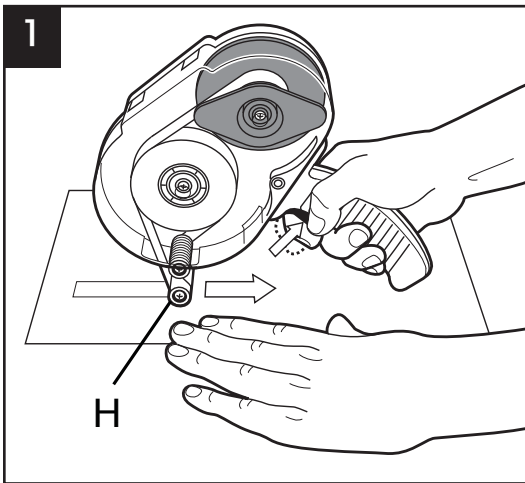
- 3** **REMOVE LINER RETAINER:** Hold rewind hub (C), rotate liner retainer (D) counterclockwise and lift up to remove. See Fig. 3.

**INSTALL TAPE ROLL (CONTINUED)**

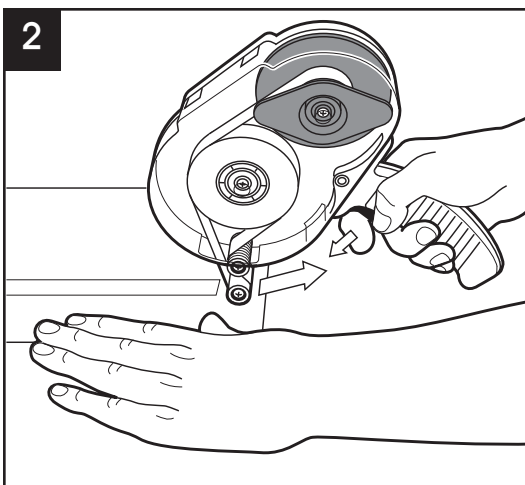
- 4 PLACE TAPE ONTO HUB:** Place tape roll adhesive side out on three fingers of hub and press down until hook (E) locks tape in place. See Fig. 4.



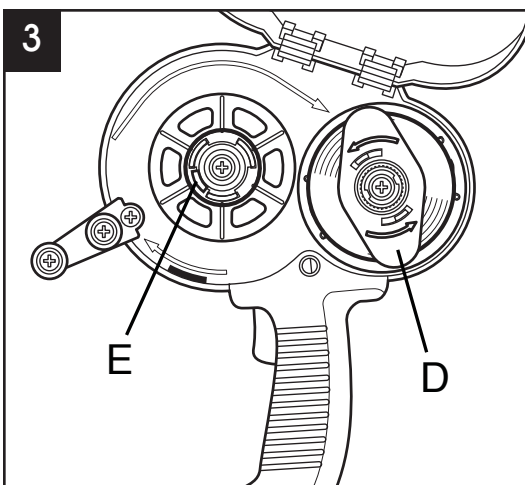
- 5 THREAD TAPE:** Hold down trigger and thread tape leader around front rollers as shown in Fig. 5. Make sure one end of leader is inserted into take-up spool (F) and other end of leader stops at point (G) as shown. Replace liner retainer and close cover.

**USING THE DISPENSER**

- 1** **TO START:** Place roller (H) on surface. Depress trigger and pull dispenser.



- 2** **TO STOP:** Keep roller on surface, stop rolling, release trigger and pull dispenser to break the adhesive.



- 3** **REMOVING REWOUND LINER:** Rotate and remove liner retainer (D). Remove liner.

- 4** **REMOVING TAPE CORE:** Push hook (E) and remove tape core.