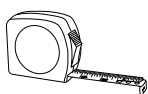
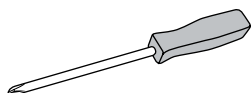


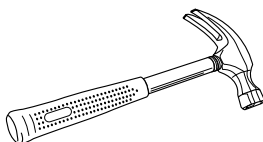
TOOLS NEEDED



Tape Measure



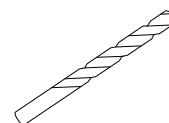
Phillips Screwdriver



Hammer



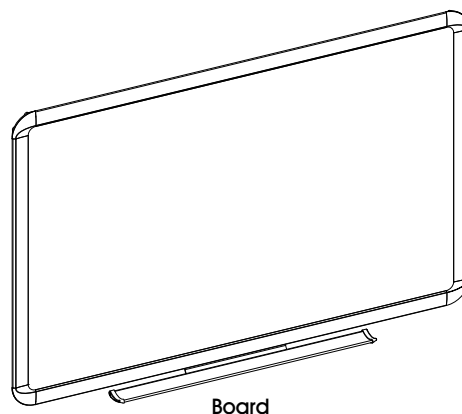
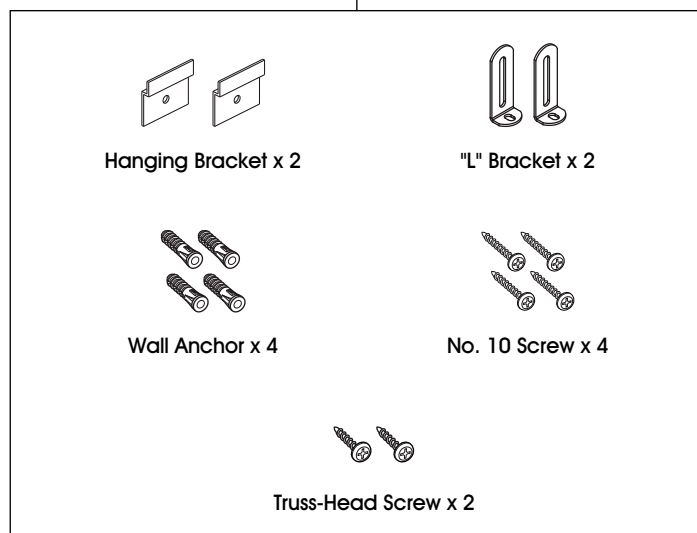
Drill



1/4" and 1/8" Drill Bits

PARTS

Hardware Kit



Page Clip x 2

MOUNTING



NOTE: Before mounting board to wall, refer to instructions in "Accessory Kit" to attach marker tray to board frame.

1. Determine board location. Position top hanging brackets, mark center hole of each hanging bracket 6" from outside edge of board and 7/8" down from top of board (A). (See Figure 1)
2. Drill holes for each hanging bracket in marked locations on the wall using a 1/4" drill bit. Insert wall anchors into holes flush with wall. Insert screws through hanging brackets into wall anchors (B). Tighten firmly. (See Figure 1)
3. Holding the board at approximately a 15° angle, place the channel in the back of the frame over the hanging brackets. Lower the board so it is flush to the wall (C). (See Figure 1)
4. To position bottom "L" brackets, mark wall 1 5/8" up from bottom of board, 6" from each outside edge (D). (See Figure 2)
5. Drill holes in marked locations using a 1/4" drill bit. Insert wall anchors into holes flush with wall. Insert screws through "L" brackets into wall anchors (E). (See Figure 2)
6. Hang board and mark frame through hole in each "L" bracket. Remove board and drill pilot hole at each mark with 1/8" drill bit. Re-hang board and insert #8 x 1/2" truss-head screw through each "L" bracket and into pilot hole in frame (F). Tighten firmly. (See Figure 2)

Figure 1

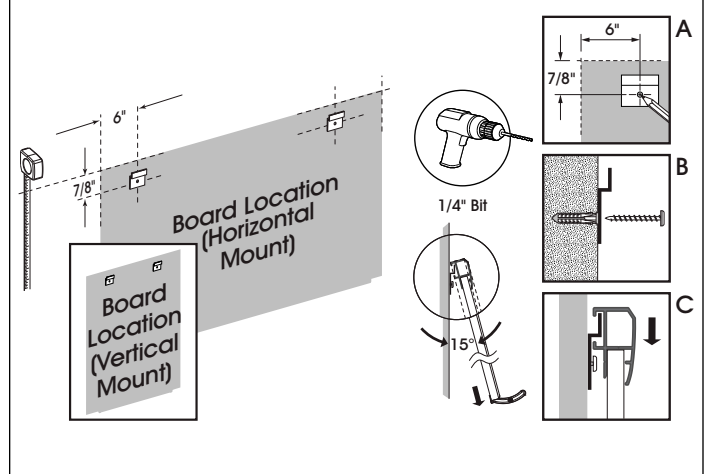
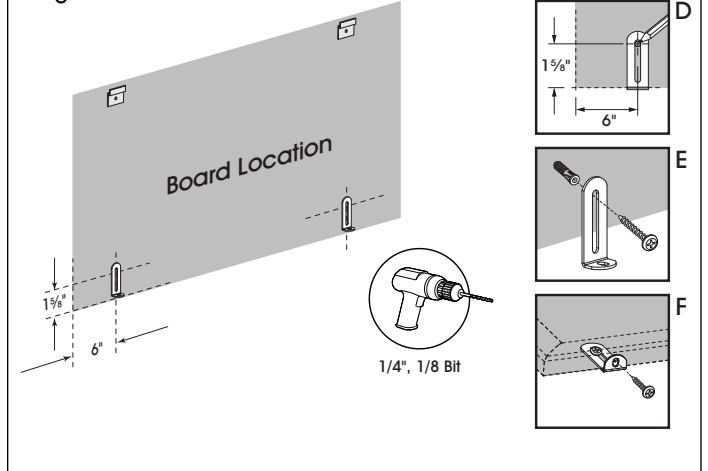


Figure 2



ACCESSORY PAGE CLIP

1. Insert flat tab of page clip under frame. (See Figure 3)



NOTE: Clips can be placed anywhere along frame edge to hold notes or documents.

Figure 3

