

ASSEMBLY

Figure 1

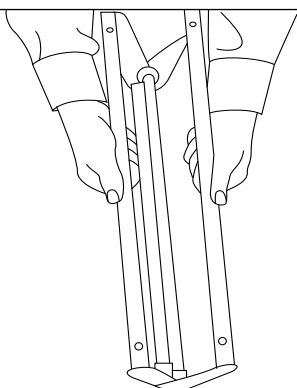


Figure 2

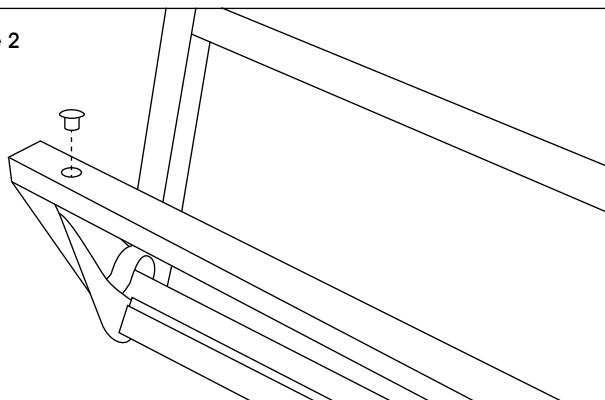
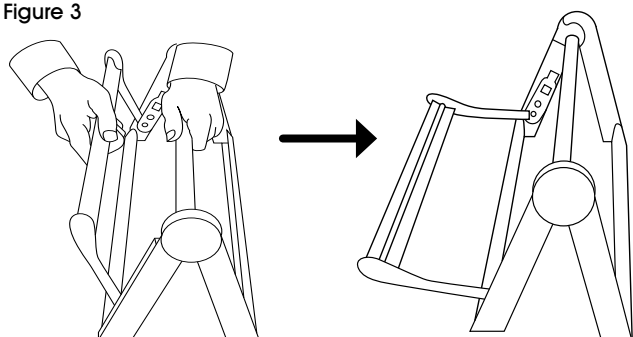


Figure 3



TO ASSEMBLE FOR COUNTERTOP USE

1. Remove paper cutter from box and grasp the bottom crossbars. Pull these crossbars apart until they lock in the open position. (See Figure 1)



NOTE: Use caution when unpacking paper cutters with serrated blades.

2. Insert the included rubber feet into the holes on the crossbars. (See Figure 2)
3. Set the cutter upright (rubber feet down) on the workstation. With one hand on the dowel, pull the blade towards the workstation top until the blade locks into the open position. (See Figure 3)



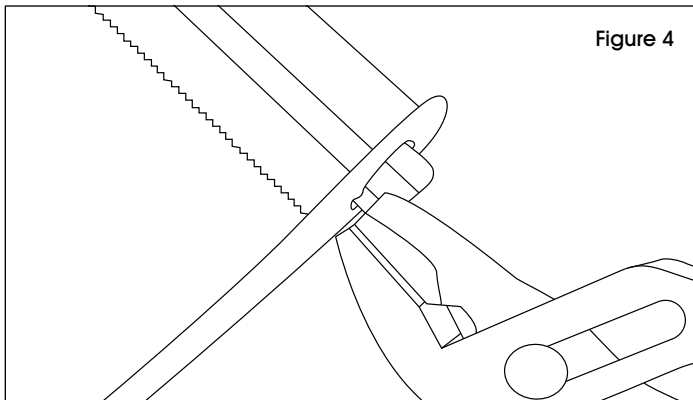
NOTE: Blade is spring loaded. Use exceptional caution with serrated blade units.

4. Remove the dowel and slide it through the core of the material intended for use on the cutter. Core plugs with 1" openings are included and are recommended for use with this product.
5. Place the exposed ends of the dowel into the dowel sockets, one on either side of the cutter. Carefully push the blade towards the material until the blade rests securely against the roll.
6. Feed material through the underside of the blade to dispense and tear.

WALL MOUNTING INSTRUCTIONS

1. Follow step 1 of the counter top instructions.
2. With appropriate hardware (not included), mount cutter to desired surface through the holes in the crossbars. Mount with blade facing the ceiling.
3. Follow steps 3-5 of the counter top instructions to load the cutter.
4. Feed the material away from the wall to dispense and tear.

ASSEMBLY CONTINUED

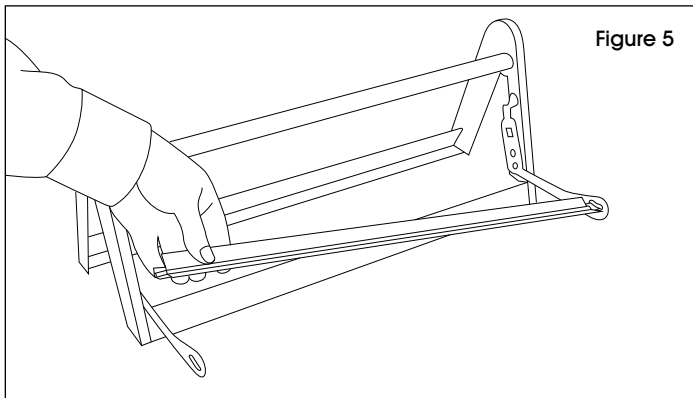


WALL MOUNTING A CUTTER WITH SERRATED BLADE

1. Orientation of the blade will need to be reversed to properly dispense and tear. To reverse blade, use a pliers to bend one of the tabs on the end of the blade. (See Figure 4).



NOTE: Use caution when bending tab. Excessive force may break tab off, preventing a proper and secure fit for the blade.



2. Rotate blade out of socket, reverse orientation, and reinsert. (See Figure 5)
3. Use a pliers to return bent tab to original position.
4. Follow steps 1-4 of the wall mounting instructions.