

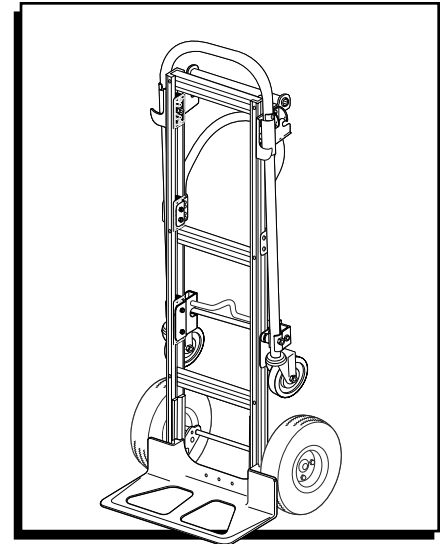
ULINE H-1382

MAGLINER® CONVERTIBLE SR. ALUMINUM HAND TRUCK

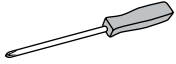
WITH PNEUMATIC WHEELS

1-800-295-5510

uline.com



TOOLS NEEDED



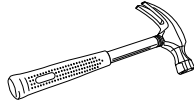
#3 Phillips Screwdriver



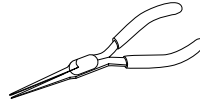
1/2" Combination Wrench
or Socket Wrench



7/16" Combination Wrench
or Socket Wrench

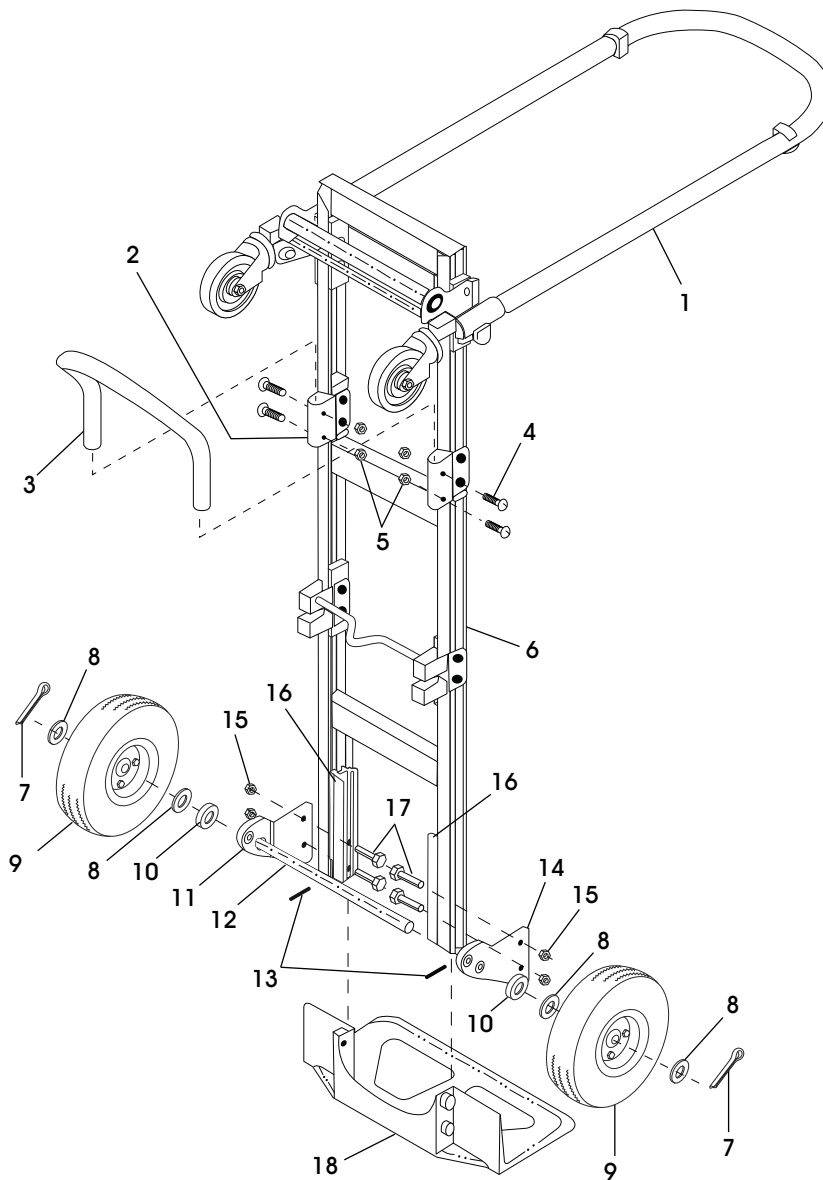


Hammer



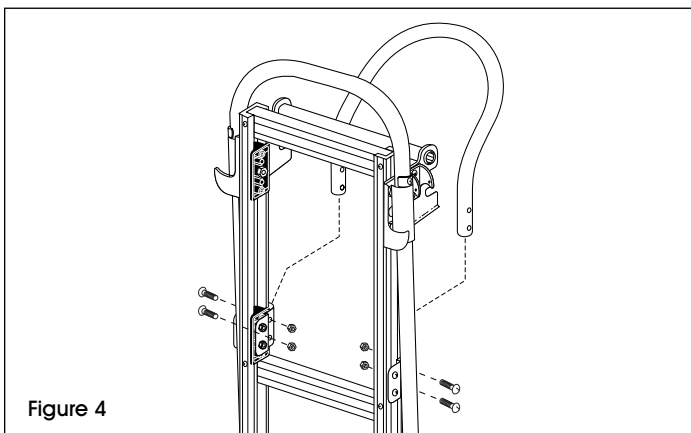
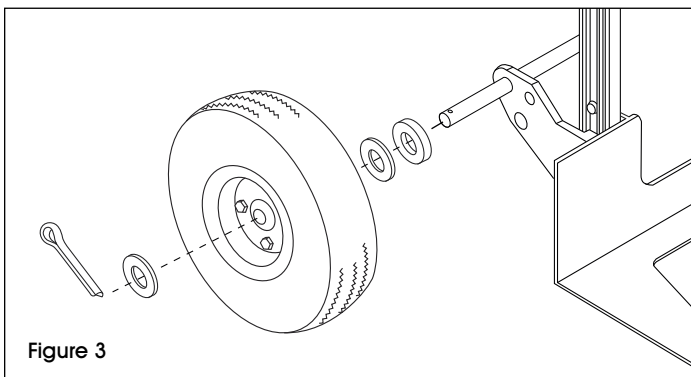
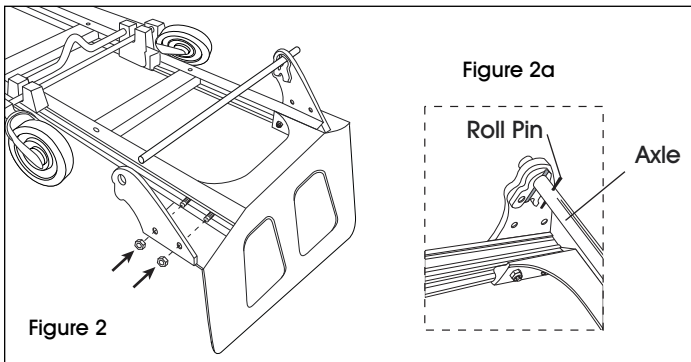
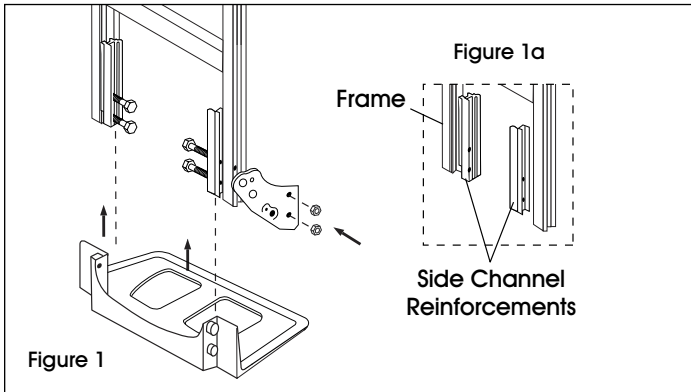
Pliers

PARTS



REF.	QTY.	DESCRIPTION
1	1	Extended Handle
2	2	Handle Bracket
3	1	Handle
4	4	1/4"-20 x 1 5/8" Pan Head Bolt
5	4	1/4" Locknut
6	1	Frame
7	2	Cotter Pin
8	4	Thin Washer
9	2	Wheel
10	2	Thick Washer
11	1	Left Hand (LH) Wheel Bracket
12	1	Axle
13	2	Pin Coil Spring/Roll Pin
14	1	Right Hand (RH) Wheel Bracket
15	4	5/16" Locknut
16	2	Side Channel Reinforcement
17	4	5/16"-18 x 2 1/4" Hex Head Bolt
18	1	Nose Plate

ASSEMBLY



ATTACH NOSE PLATE, WHEEL BRACKETS AND AXLE

1. Position side channel reinforcements against bottom frame rail. (See Figure 1a) Slide nose plate into channel on side channel reinforcement, keeping bolt holes aligned. (See Figure 1)
2. Insert four 5/16"-18 x 2¼" hex head bolts through the nose plate, side channel reinforcements and frame. (See Figure 1)
3. Slide the right hand wheel bracket over the bolts on the outside of the frame leg and secure with two 5/16" locknuts, but DO NOT tighten. (See Figure 1)
4. Lay hand truck on front so nose plate faces downward. (See Figure 2)
5. Use a hammer to tap first roll pin into the axle.
6. Insert the axle (the end with the roll pin in place) through the upper axle hole in the wheel bracket. (See Figure 2a) Rotate axle until roll pin locks into position in the wheel bracket.
7. Position and attach the left hand wheel bracket, sliding it over the axle to the outside of the frame leg. Secure with two 5/16" locknuts, but DO NOT tighten. (See Figure 2)
8. Use a hammer to tap second roll pin into the axle.

ATTACH WHEELS

1. Slide one thick and one thin washer onto each end of the axle. Slide a wheel onto each end of the axle (long hub portion is toward the wheel bracket). Slide a thin washer on each end of the axle. (See Figure 3)
2. Insert a cotter pin through the holes in each end of the axle. Bend cotter pins using pliers to secure wheels. Wheels should spin freely. (See Figure 3)
3. Check tire pressure (40-50 PSI max). Inflate if necessary.

ATTACH HANDLE

1. Slide handle into the handle brackets on the back side of the frame. Align holes in handle and brackets. Insert four 1/4"-20 x 1½" pan head bolts through the brackets and handle. Secure with four 1/4" locknuts. (See Figure 4)
2. Tighten all locknuts.