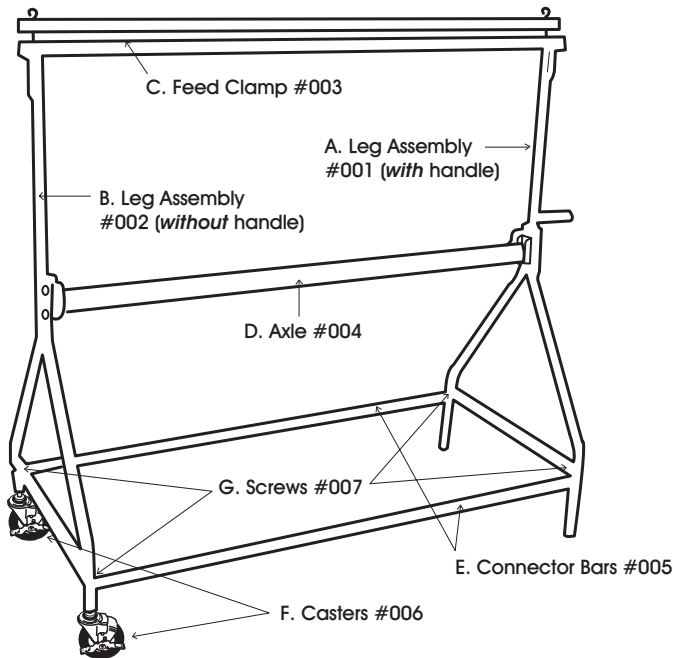
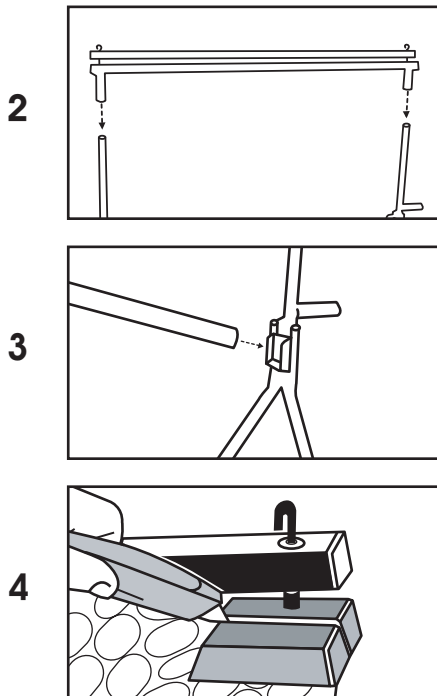


PARTS LIST



- A: Leg Assembly with handle #001 (1 ea.)
- B: Leg Assembly without handle #002 (1 ea.)
- C: Feed Clamp #003 (1 ea.)
- D: Axle #004 (1 ea.)
- E: Connector Bars #005 (2 ea.)
- F: Casters #006 (2 ea.)
- G: Screws #007 (4 Ea.)

INSTRUCTIONS FOR ASSEMBLY



- 1** Attach two Connector Bars (#005) to Leg Assemblies (#'s 001 and 002).
- 2** Loosen outside screw on Feed Clamp (#003), and slide Feed Clamp into top Leg Assembly tubes (#001 and 002). Tighten Screws to secure.
- 3** Slide Axle into holder on assembly legs as shown.
- 4** Adjust "I" bolt to packaging material thickness. Packaging materials feed from the back of the feed clamp through the front to use cutting edge.